



2024

TrailLink Unlimited



Guides



# Linear Park Pathway

*Michigan*



## Linear Park Pathway

Michigan

*Lapeer's Linear Park Pathway courses through the city, connecting several parks with residences and businesses. A portion of the trail*



Lapeer's Linear Park Pathway courses through the city, connecting several parks with residences and businesses. A portion of the trail runs on a former railroad corridor; the same one now home to the [Southern Links Trailway](#) farther north.

At the trail's northern end, Water Tower Travel Trailer Park offers 30 campsites for visitors to the area. The adjacent Rowden Park, through which the Linear Park Pathway loops, features tennis courts, picnic areas and a baseball diamond. Farther south, Annrook Park contains a playground and two more baseball and softball diamonds, while Rotary Park and East Annrook Park feature a large swath of open space divided by E. Nepepping Street.



# Linear Park Pathway

## Michigan

**States:** Michigan

**Counties:** Lapeer

Length: 2.3miles

**Trail end points:** Water Tower Travel Trailer Park off N. Main St./SR 24 to N. Saginaw St. and W. Genesee St.

**Trail surfaces:** Asphalt

**Trail category:** Rail-Trail

**Trail activities:** Bike,Inline

Skating, Wheelchair Accessible, Walking, Cross Country Skiing

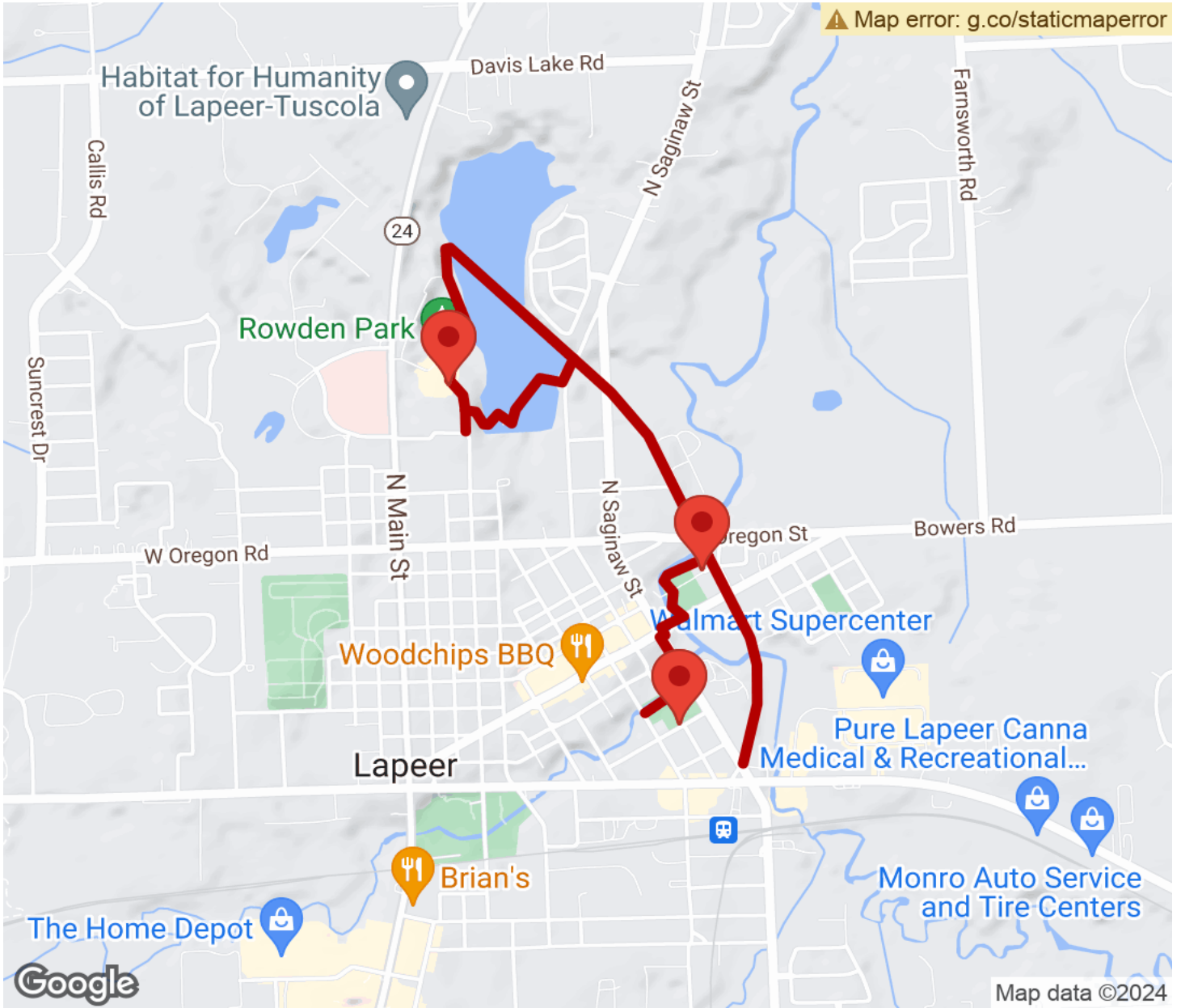
## Parking & Trail Access

Parking for the Linear Park Pathway is available at Water Tower Travel Trailer Park and Rowden Park on N. Main Street/State Route 24. Closer to downtown Lapeer, park at Rotary Park on E. Park Street or Annrook Park on Horton Street.



# Linear Park Pathway

Michigan



Trailhead



Restroom



Parking



Water Fountain



Tunnel



**TrailLink**  
by Rails-to-Trails Conservancy

**TrailLink.com**