



2026

TrailLink Unlimited



Guides



**ByPass
Shelterbelt**
Washington



ByPass Shelterbelt Washington

The ByPass Shelterbelt runs along the west side of Richland from Wellsian Way and Aaron Streets on the south end to Spengler



The ByPass Shelterbelt runs along the west side of Richland from Wellsian Way and Aaron Streets on the south end to Spengler Street on the north end. Although it parallels the Bypass Highway, the sound barrier and mature shade trees make it a very pleasant journey. There are many park benches along the way.

From the north end, one can easily access the [Richland Riverfront Trail](#) by heading east on Spengler for one mile to Harris Street. This is a residential street with very little traffic.

The [Sacajawea Heritage Trail](#) is also bike accessible by crossing the Bypass Highway at Duportail Street and following the trail past the Chamna Nature Preserve and the rock quarry.



ByPass Shelterbelt

Washington

States: Washington

Counties: Benton

Length: 4.8miles

Trail end points: Wellsian Way at Aaron Drive
to Spengler Street

Trail surfaces: Asphalt

Trail category: Greenway/Non-RT

Trail activities: Bike, Inline

Skating, Walking, Wheelchair Accessible

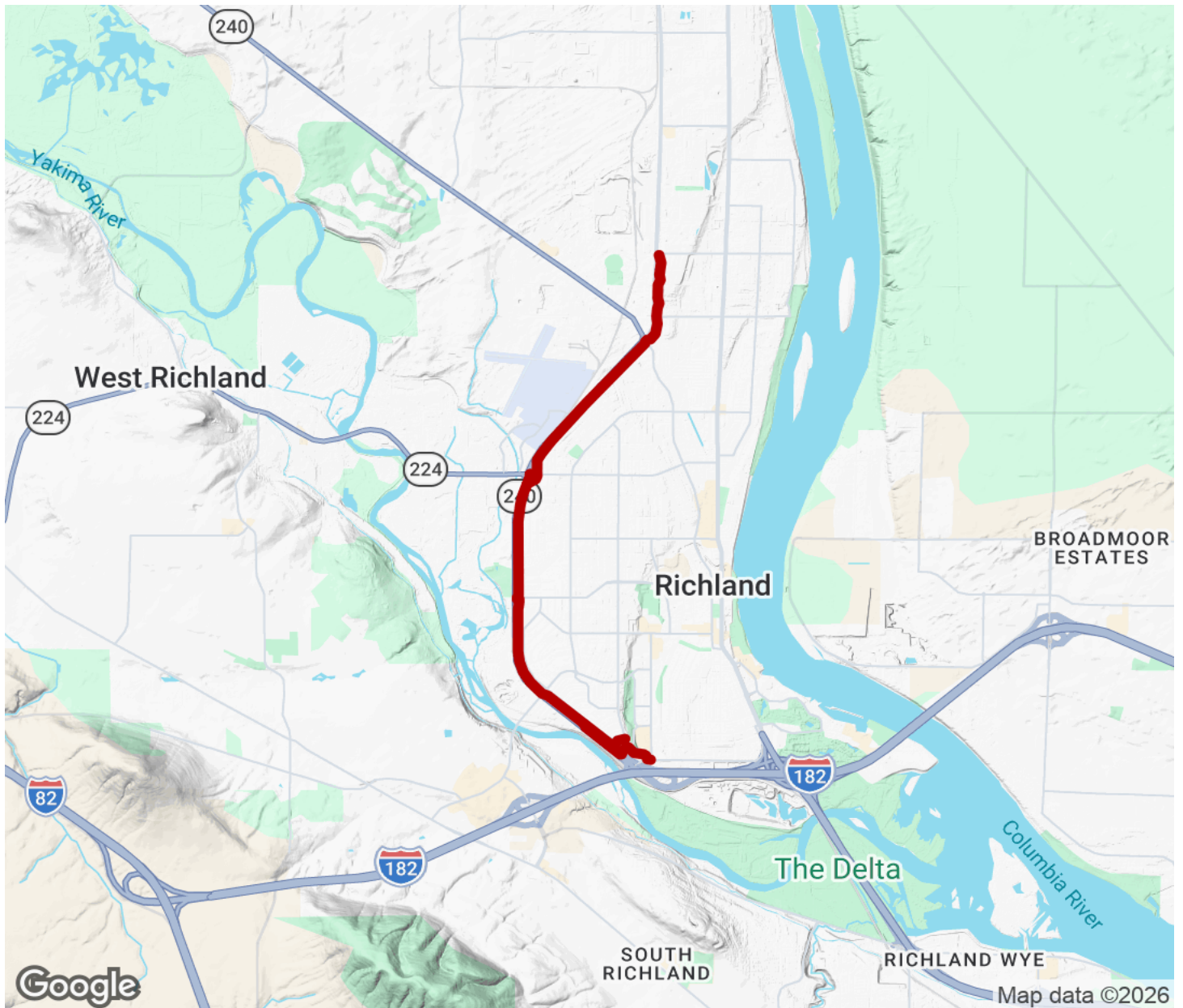
Parking & Trail Access

To get to the south end of the trail, take the Wellsian Way exit off I-182 to Fred Meyer's department store. Parking can be found in Fred Meyer's parking lot. The trail starts at the south end of the lot next to McDonald's restaurant. Ride up the steep hill for 100 yards then cross the intersection and proceed north on Thayer Drive for a half-block. The trail is on the left. No parking is available at the north end of the trail.



ByPass Shelterbelt

Washington



Trailhead



Restroom



Parking



Water Fountain



Tunnel



TrailLink
by Rails-to-Trails Conservancy

TrailLink.com