



2024

TrailLink Unlimited 

Guides



**Yadkin Rail
Trail**
North Carolina



Yadkin Rail Trail

North Carolina

The Yadkin Rail Trail, also known as the Rock Creek Park Greenway, is a short hiking trail south of Albemarle, North



park's substantial list of amenities.

The Yadkin Rail Trail, also known as the Rock Creek Park Greenway, is a short hiking trail south of Albemarle, North Carolina. The trail follows the same former Norfolk Southern Railway corridor as the [Roger F. Snyder Greenway](#) farther north, although that trail is paved and more urban.

The gravel trail, which is best suited for joggers and walkers, extends south from Rock Creek Park's main drive, coursing through thick stands of trees to a dead end not far from an active rail line. The park is Yadkin's oldest, established in the late 1930s upon completion of the city's public swimming pool. The original feature is still there, but the park has grown to encompass the surrounding woodlands. A picnic area, rappelling tower, obstacle course, baseball diamond and tennis courts round out the



Yadkin Rail Trail

North Carolina

States: North Carolina

Counties: Stanly

Length: 0.8miles

Trail end points: Rock Creek Park at south end
of Rock Creek Dr. to west of US 52

Trail surfaces: Gravel

Trail category: Rail-Trail

Trail activities: Walking

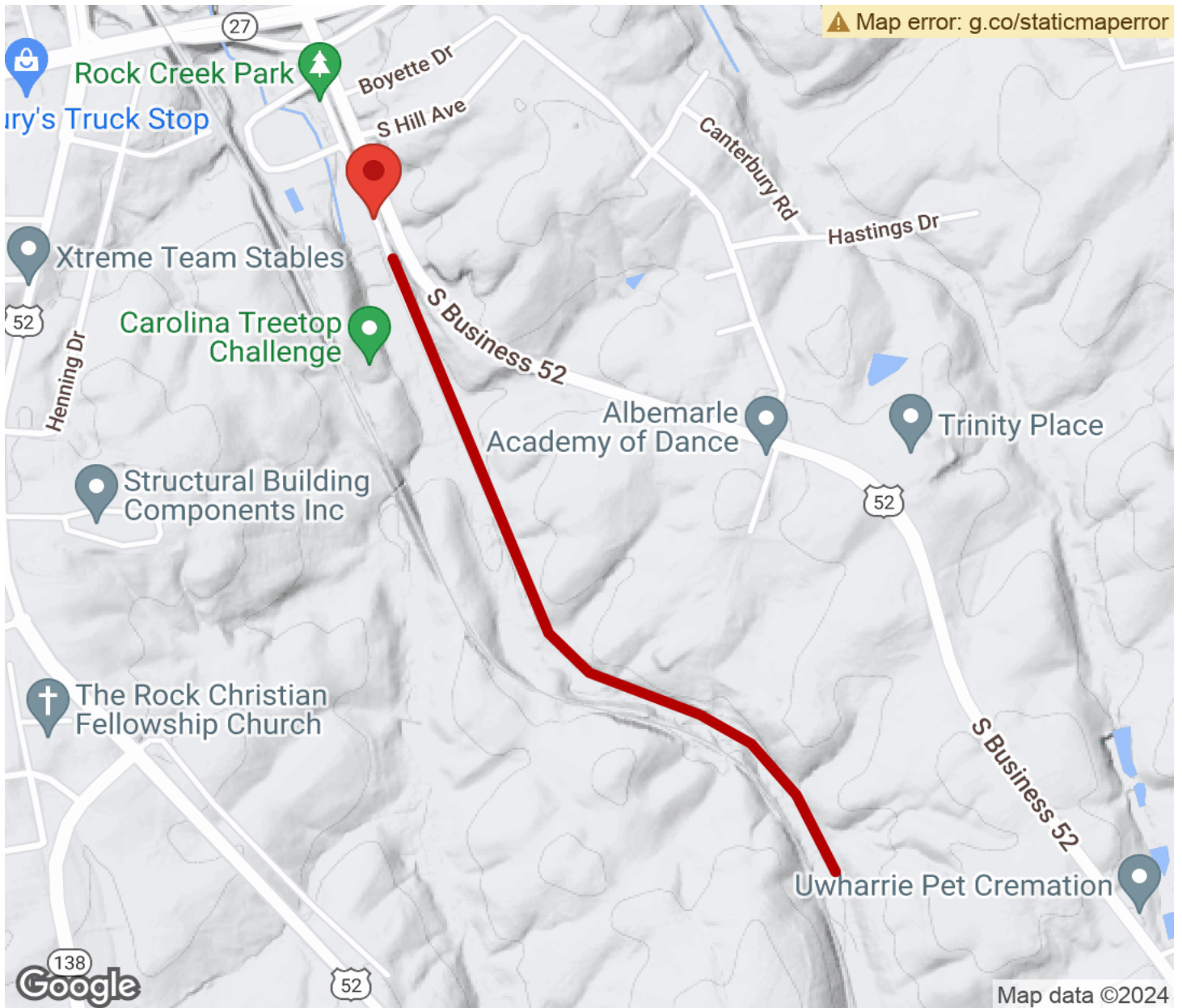
Parking & Trail Access

Parking for the Yadkin Rail Trail is available in Rock Creek Park. From downtown Albemarle, take US 52 Business south, passing under State Route 27/73. The park entrance is on the right, immediately after the highway overpass.



Yadkin Rail Trail

North Carolina



Trailhead



Restroom



Parking



Water Fountain



Tunnel



TrailLink
by Rails-to-Trails Conservancy

TrailLink.com