



2024

TrailLink Unlimited



Guides



## Las Estrellas Trail

*New Mexico*



## Las Estrellas Trail

*New Mexico*

*The Las Estrellas Trail is north of downtown Santa Fe and begins on Tano Rd., roughly a quarter mile from Route 84. A quick trail ride*



The Las Estrellas Trail is north of downtown Santa Fe and begins on Tano Rd., roughly a quarter mile from Route 84. A quick trail ride of less than a mile, it ends just short of the Veterans Memorial Highway.



# Las Estrellas Trail

*New Mexico*

**States:** New Mexico

**Counties:** Santa Fe

Length: 0.6miles

**Trail end points:** Tano Rd. to Ave. Rincon

**Trail surfaces:** Asphalt

**Trail category:** Greenway/Non-RT

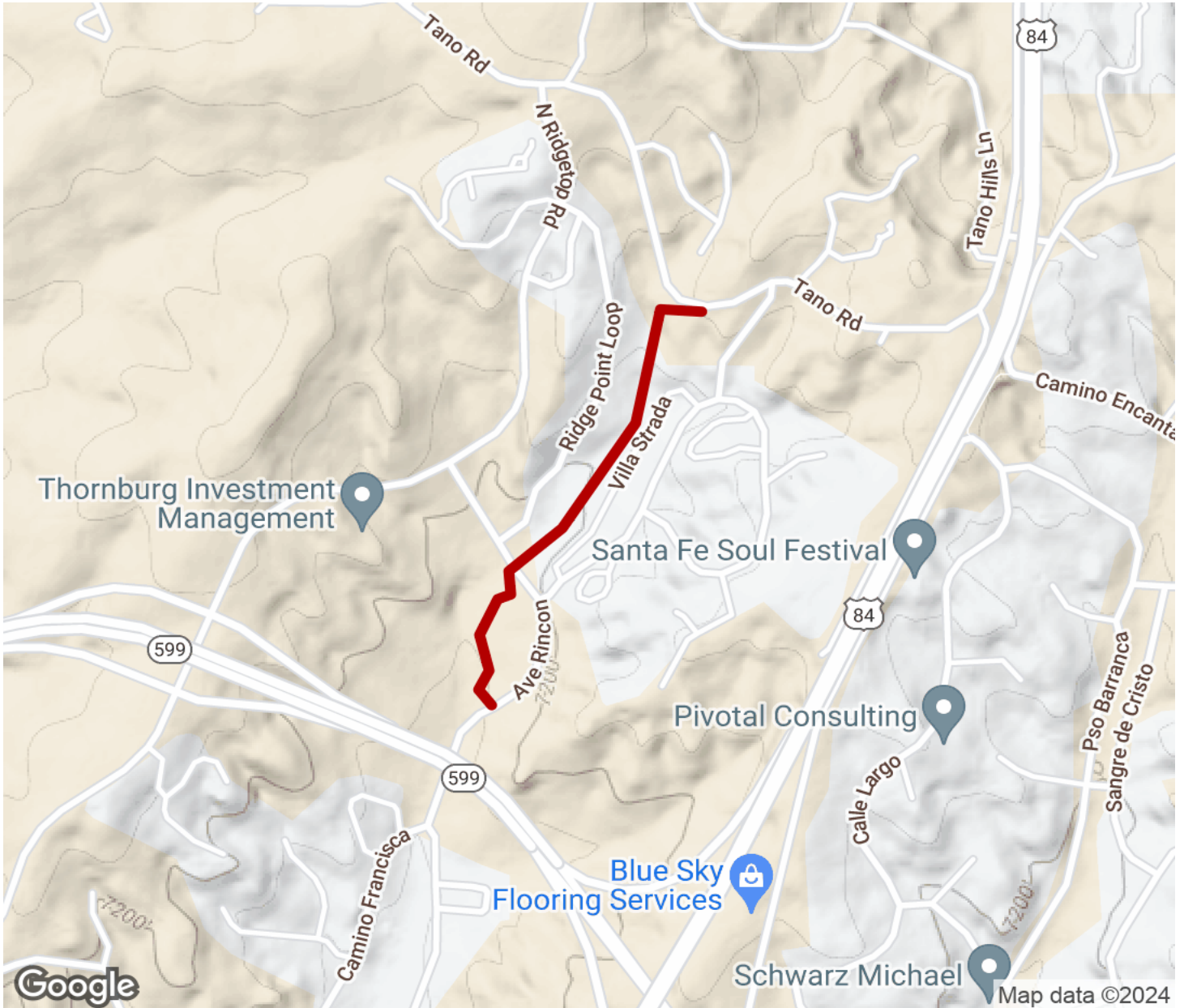
**Trail activities:** Bike, Walking

## Parking & Trail Access



# Las Estrellas Trail

New Mexico



Trailhead



Restroom



Parking



Water Fountain



Tunnel



**TrailLink**  
by Rails-to-Trails Conservancy

**TrailLink.com**