



2024

TrailLink Unlimited 

Guides



## Riverbend Preserve Rail- Trail

*Michigan*



## Riverbend Preserve Rail-Trail

Michigan

*The new Riverbend Preserve in southern Washtenaw County features 58 acres of wetlands on both sides of the Raisin River. The*



Farther south, the Southern Michigan Railroad Society runs excursion trains between Clinton and Tecumseh on a portion of the same historic railroad corridor.

The new Riverbend Preserve in southern Washtenaw County features 58 acres of wetlands on both sides of the Raisin River. The area is a common resting place for migratory birds on their trek across the country, and two trails (one with a river overlook) facilitate bird and wildlife watching.

The trail extending from the Riverbend Preserve's parking area leads to the overlook and is handicapped-accessible. In the northern part of the preserve, a scenic, natural surface rail-trail runs on a former Michigan Southern Railroad corridor, constructed in the 1850s. The short, out-and-back trail—known as the Yellow Trail or Rail Road Trail on park maps—extends north from Allen Road and is limited to hikers and cross-country skiers only.



# Riverbend Preserve Rail-Trail

*Michigan*

**States:** Michigan

**Counties:** Washtenaw

Length: 0.1miles

**Trail end points:** Allen Rd. to Riverbend Preserve

**Trail surfaces:** Dirt

**Trail category:** Rail-Trail

**Trail activities:** Walking, Cross Country Skiing

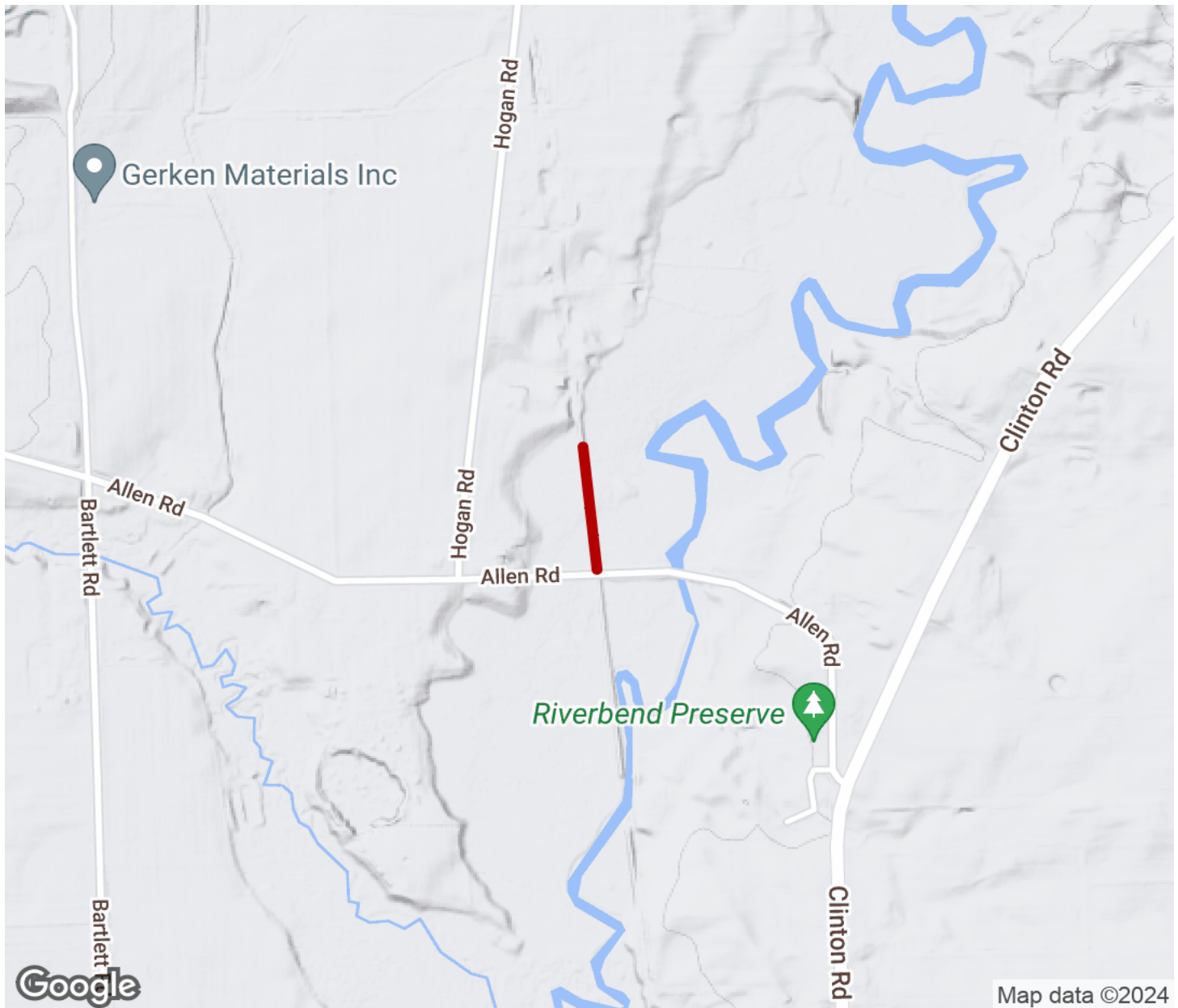
## Parking & Trail Access

Parking for the Riverbend Preserve is available in a new parking lot (opened in 2014) at its entrance off Allen Road in Bridgewater Township, just north of the intersection with Clinton Road. There is no parking at the trailhead for the preserve's rail-trail; visitors should park in the main parking lot and walk carefully along Allen Road to reach the hiking trail.



# Riverbend Preserve Rail-Trail

Michigan



Trailhead



Restroom



Parking



Water Fountain



Tunnel



**TrailLink**  
by Rails-to-Trails Conservancy

**TrailLink.com**