



2026

TrailLink Unlimited 

Guides



Mitchell Road Path

Illinois



Mitchell Road Path

Illinois

This path runs along Mitchell Road, starting in Machesney Park. The trail heads north and then travels east where it terminates at



This path runs along Mitchell Road, starting in Machesney Park. The trail heads north and then travels east where it terminates at Sunny Meadow Drive outside of Russ Park. This short path is just outside of Rock Cut State Park where activities such as swimming, camping, hunting, and picnicking are available.



TrailLink
by Rails-to-Trails Conservancy

TrailLink.com



Mitchell Road Path

Illinois

States: Illinois

Counties: Winnebago

Length: 0.6miles

Trail end points: Ridge Ave. to Sunny Meadow Drive

Trail surfaces: Asphalt

Trail category: Greenway/Non-RT

Trail activities: Bike,Inline

Skating,Walking,Wheelchair Accessible

Parking & Trail Access

From South: Head north on Mitchell Road from route 173 for about two blocks. There is parking on the street as well as a few off street spots.

From North: Take Mitchell Road north from 173 to Timberlyne Way about half of a mile. Travel east one block to Sunny Meadow Drive, and then south about half a block to where it dead ends. The north end of the path heads west from where Sunny Meadow Drive dead ends.



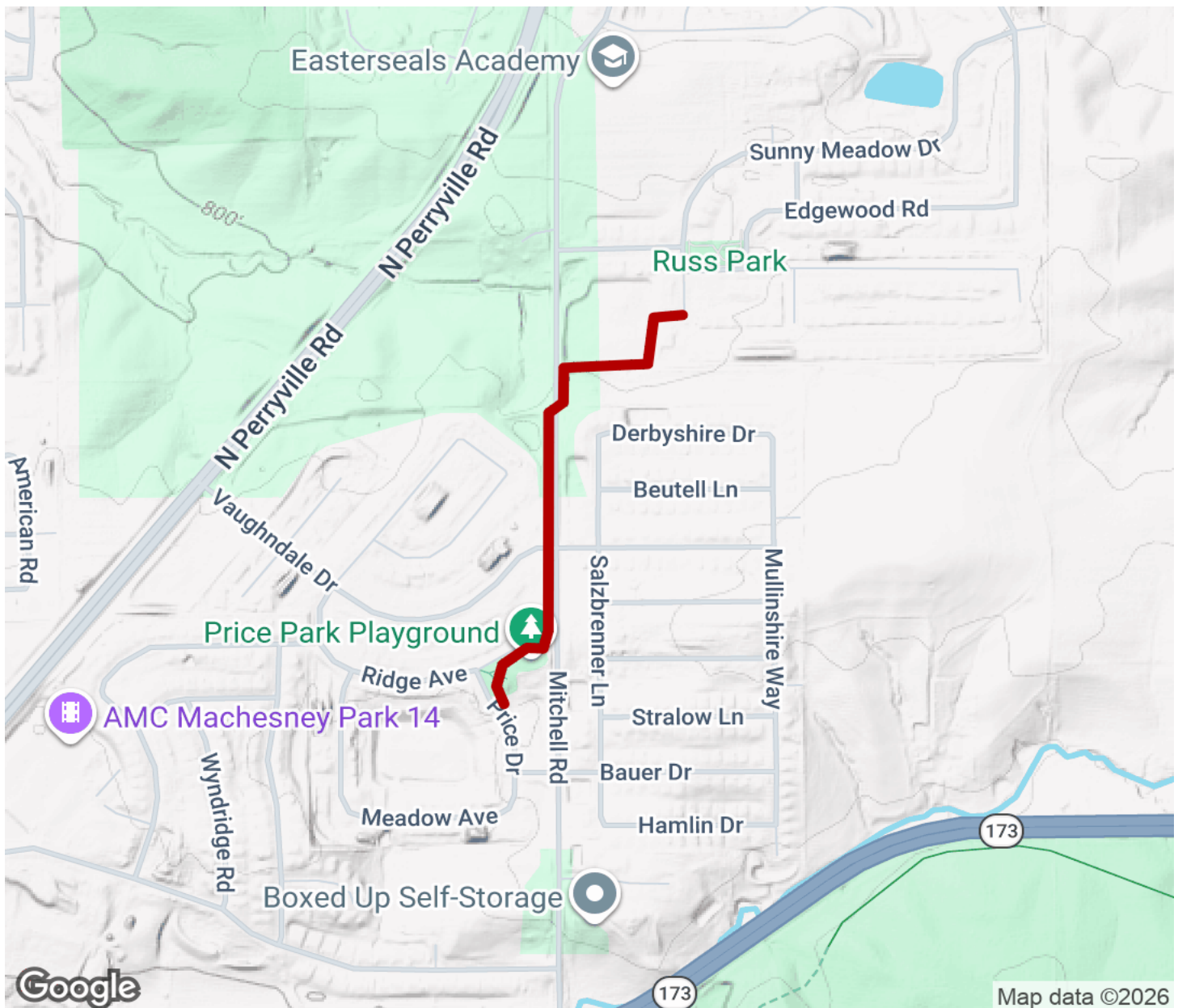
TrailLink
by Rails-to-Trails Conservancy

TrailLink.com



Mitchell Road Path

Illinois



Trailhead



Restroom



Parking



Water Fountain



Tunnel



TrailLink
by Rails-to-Trails Conservancy

TrailLink.com