



2025

TrailLink Unlimited 

Guides



Valhalla Trail

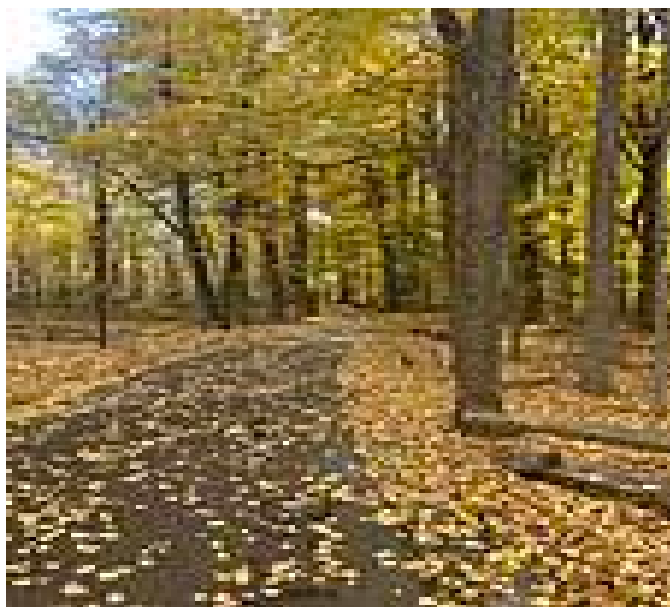
Michigan



Valhalla Trail

Michigan

The Valhalla Trail runs for just over a mile in Delhi Charter Township, a southern suburb of Lansing. Its northern half is



The Valhalla Trail runs for just over a mile in Delhi Charter Township, a southern suburb of Lansing. Its northern half is wooded and winds through Valhalla Park, which offers a swimming beach, playground, and picnic area. On the north side of E. Willoughby Road, the trail connects to the [Sycamore Trail](#), which continues north another 2 miles.

The southern half mile of the trail is nestled between Depot Street and Norfolk Southern Railroad. It ends at Holt Road, which trail-goers can follow west on a sidewalk into downtown Holt.



TrailLink
by Rails-to-Trails Conservancy

TrailLink.com



Valhalla Trail

Michigan

States: Michigan

Counties: Ingham

Length: 1.3miles

Trail end points: E. Willoughby Road to Holt Road

Trail surfaces: Asphalt

Trail category: Rail-Trail

Trail activities: Bike, Inline Skating, Walking

Parking & Trail Access

Parking and restrooms are available in Valhalla Park (4000 Keller Road) on the northern end of the trail.



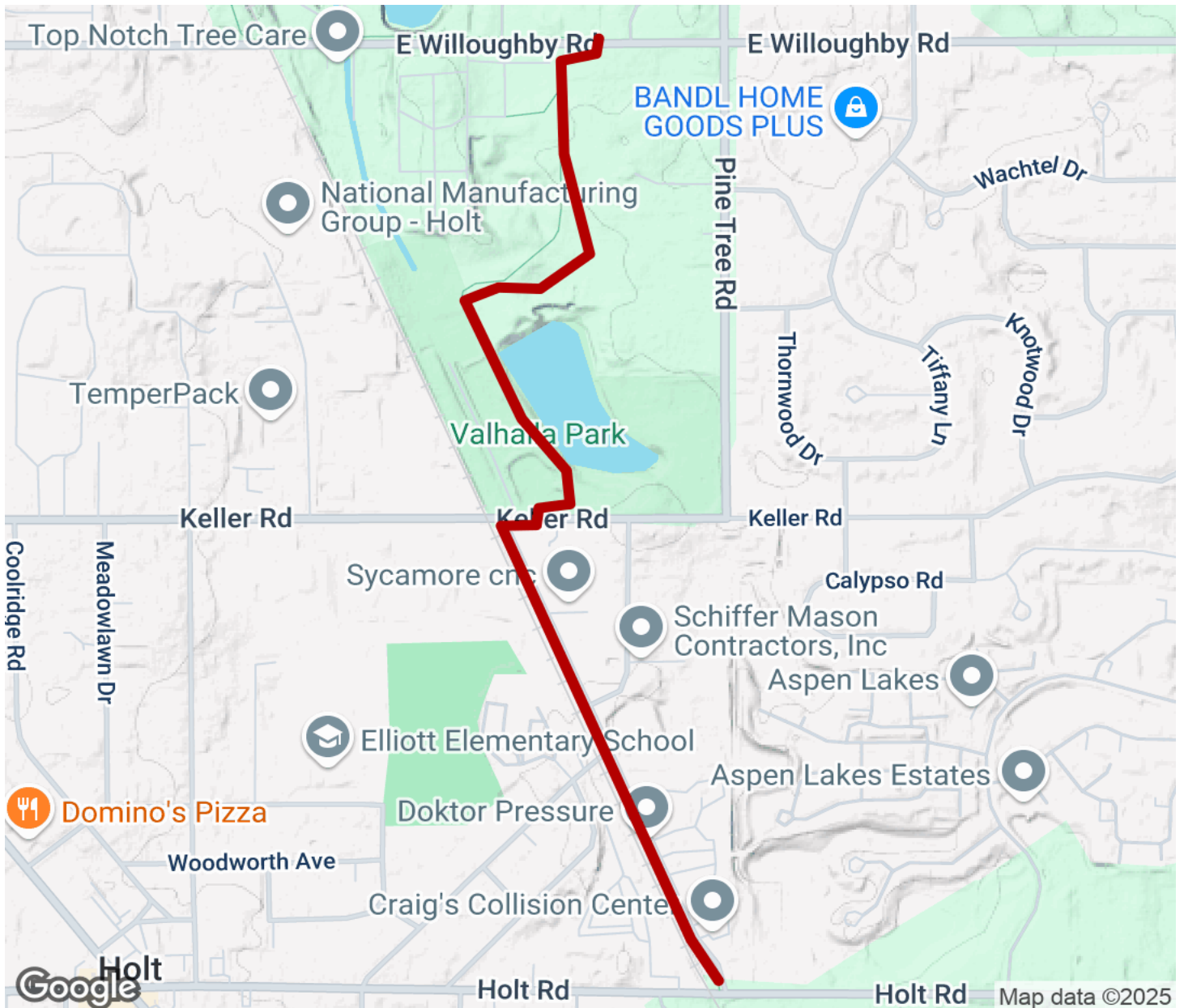
TrailLink
by Rails-to-Trails Conservancy

TrailLink.com



Valhalla Trail

Michigan



Trailhead



Restroom



Parking



Water Fountain



Tunnel



TrailLink

by Rails-to-Trails Conservancy

[TrailLink.com](https://www.TrailLink.com)