



2024

TrailLink Unlimited



Guides



## Windsor Hills Conservation Trail

*Maryland*



## Windsor Hills Conservation Trail

Maryland

*The Windsor Hills Conservation Trail is a short hiking trail through the Windsor Hills neighborhood of Baltimore. Built partially on a*



continued across the waterway to Dickeyville.

The bridge has long since been removed, and the trail now continues east up a small hill to the trail's end at Windsor Mill Road, meeting the other leg of the trail along the way. At trail's end, pick up the paved [Gwynns Falls Trail](#) to travel 15 miles through Baltimore alongside the scenic stream.

The Windsor Hills Conservation Trail is a short hiking trail through the Windsor Hills neighborhood of Baltimore. Built partially on a former streetcar line that once connected the area with the nearby neighborhood of Dickeyville, the trail now sticks to the north side of Gwynns Falls, offering ample opportunities to see some of the more than 135 species of birds that call the area home.

Beginning at the intersection of Fairfax Road and Clifton Road, the trail extends southward on the former #35 streetcar line, ultimately reaching a fork in the trail deep in the woods. Head southeast for a gentle descent down a gully to Gwynns Falls. Alternatively, head southwest to pass the foundations of a 19th century flour mill and loop around via an old mill race and down a steep rock embankment to Gwynns Falls, where the streetcar once



# Windsor Hills Conservation Trail

*Maryland*

**States:** Maryland

**Counties:** Baltimore City

Length: 0.9miles

**Trail end points:** Gwynns Falls Trail at Windsor Mill Rd. to Fairfax Rd. and Clifton Rd.

**Trail surfaces:** Dirt

**Trail category:** Rail-Trail

**Trail activities:** Walking

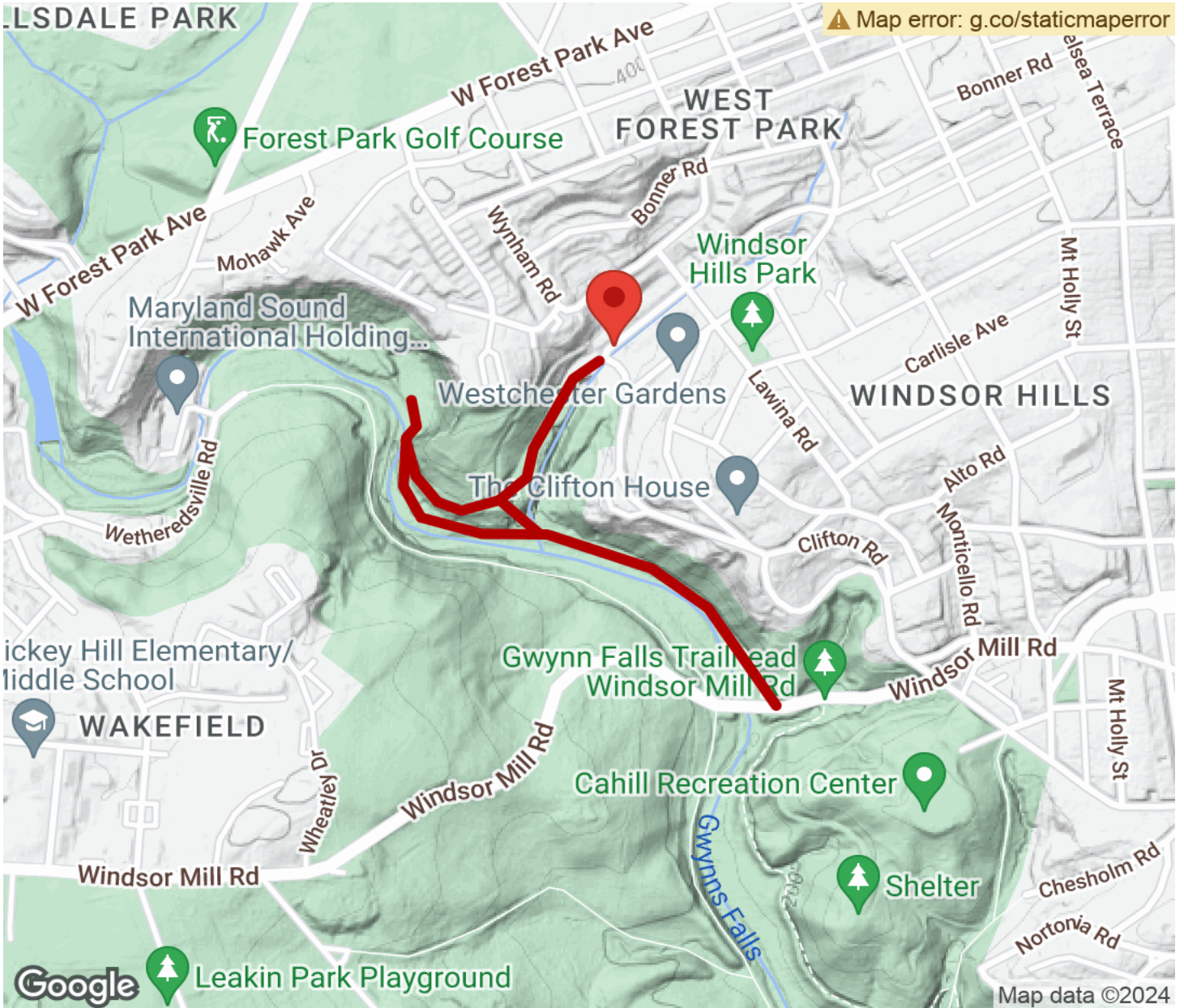
## Parking & Trail Access

Parking is available along Fairfax Road at the trail's northern end. Be sure to obey any posted parking restrictions.



# Windsor Hills Conservation Trail

Maryland



Trailhead



Restroom



Parking



Water Fountain



Tunnel



**TrailLink**  
by Rails-to-Trails Conservancy

**TrailLink.com**