



2026

TrailLink Unlimited 

Guides



**Karl Stirner
Arts Trail**
Pennsylvania



Karl Stirner Arts Trail

Pennsylvania

The trail winds along the Bushkill Creek connects the old Simon Silk Mill on 13th Street to Third Street at the base of the stone stairs



city's first dog park, which is situated just north of Route 22's Cemetery Curve. The dog park has separate penned areas for bigger dogs and smaller dogs.

The trail winds along the Bushkill Creek connects the old Simon Silk Mill on 13th Street to Third Street at the base of the stone stairs leading up to Lafayette College. The trail is paved and though not complete, will have signage and art installations along the walkway.

The trail is named for Easton sculptor Karl Stirner, who has spent 25 years as a mentor and unofficial real estate agent, ushering aspiring artists to Easton. German-born Stirner started his art career at age 23. He was a professional drafter who served in World War II. He has held teaching positions at Tyler School of Art at Temple University and at Moore and Swarthmore colleges.

There are benches spread along the trail which runs along the Bushkill Creek and Route 22. The trail features the



Karl Stirner Arts Trail

Pennsylvania

States: Pennsylvania

Counties: Northampton

Length: 2.4miles

Trail end points: N. 13th Street, 0.2 miles south of Bushkill Drive to Riverside Park (Easton)

Trail surfaces: Asphalt

Trail category: Rail-Trail

Trail activities: Bike, Fishing, Walking

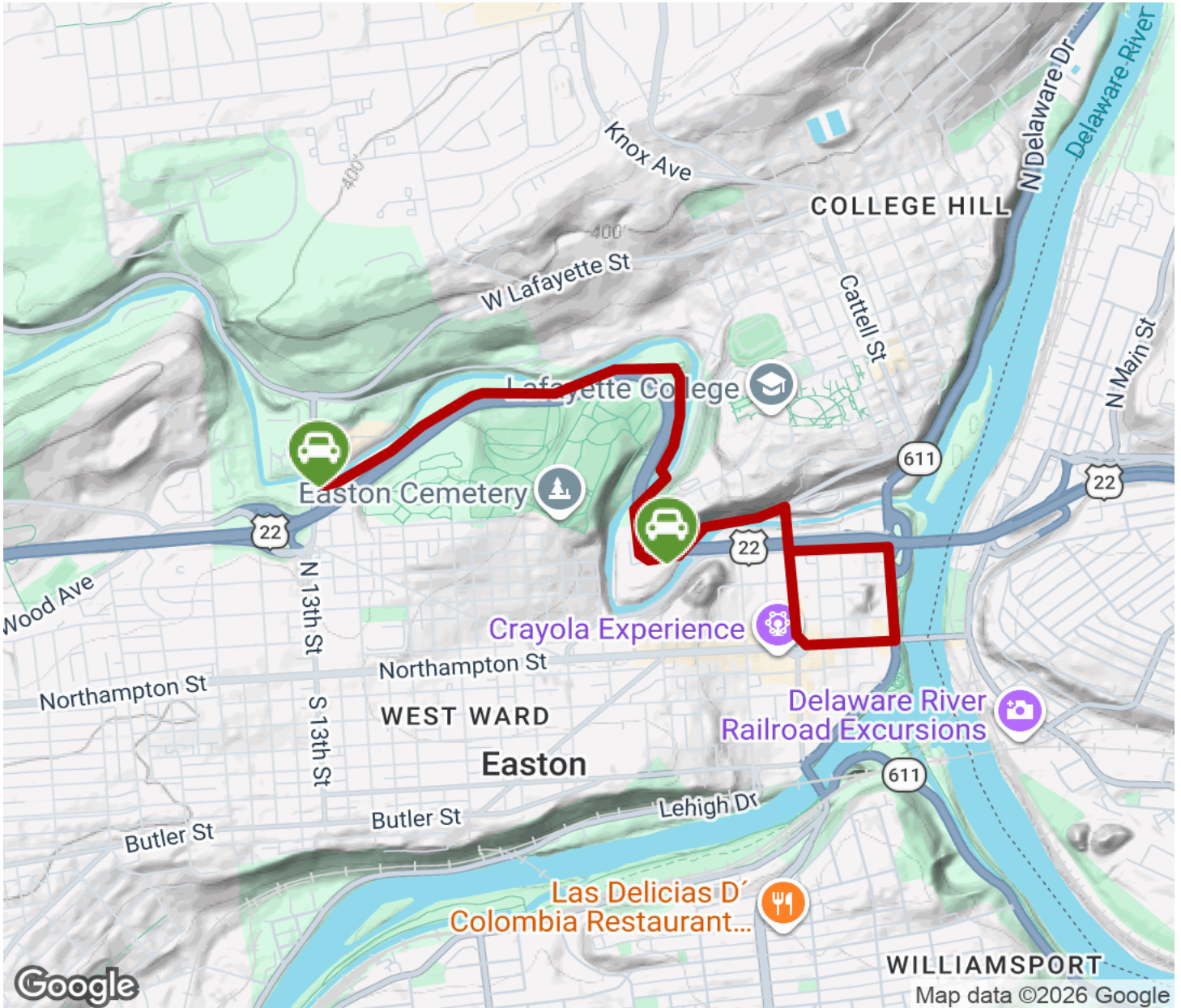
Parking & Trail Access

Parking is available between Route 22 and the Bushkill Creek on 13th Street.



Karl Stirner Arts Trail

Pennsylvania



Trailhead



Restroom



Parking



Water Fountain



Tunnel



TrailLink
by Rails-to-Trails Conservancy

TrailLink.com