



2025

TrailLink Unlimited 

Guides



**Parke
Community
Rail Trail**
Indiana



Parke Community Rail Trail

Indiana

The Rosedale South Trail offers a paved, tree-lined route along the former Pennsylvania Railroad in the western Indiana community



The Rosedale South Trail offers a paved, tree-lined route along the former Pennsylvania Railroad in the western Indiana community of Rosedale. It begins on the Central Street and travels southwest for just over a half mile.

When it opened in October 2014, it was the first segment of a larger 26-mile network of connecting rail-trails called the Covered Bridge Gateway Trail.



Parke Community Rail Trail

Indiana

States: Indiana

Counties: Parke

Length: 0.6miles

Trail end points: Central St. just west of West St. to West of Coxville Rd.

Trail surfaces: Asphalt

Trail category: Rail-Trail

Trail activities: Bike,Inline

Skating,Wheelchair Accessible,Walking

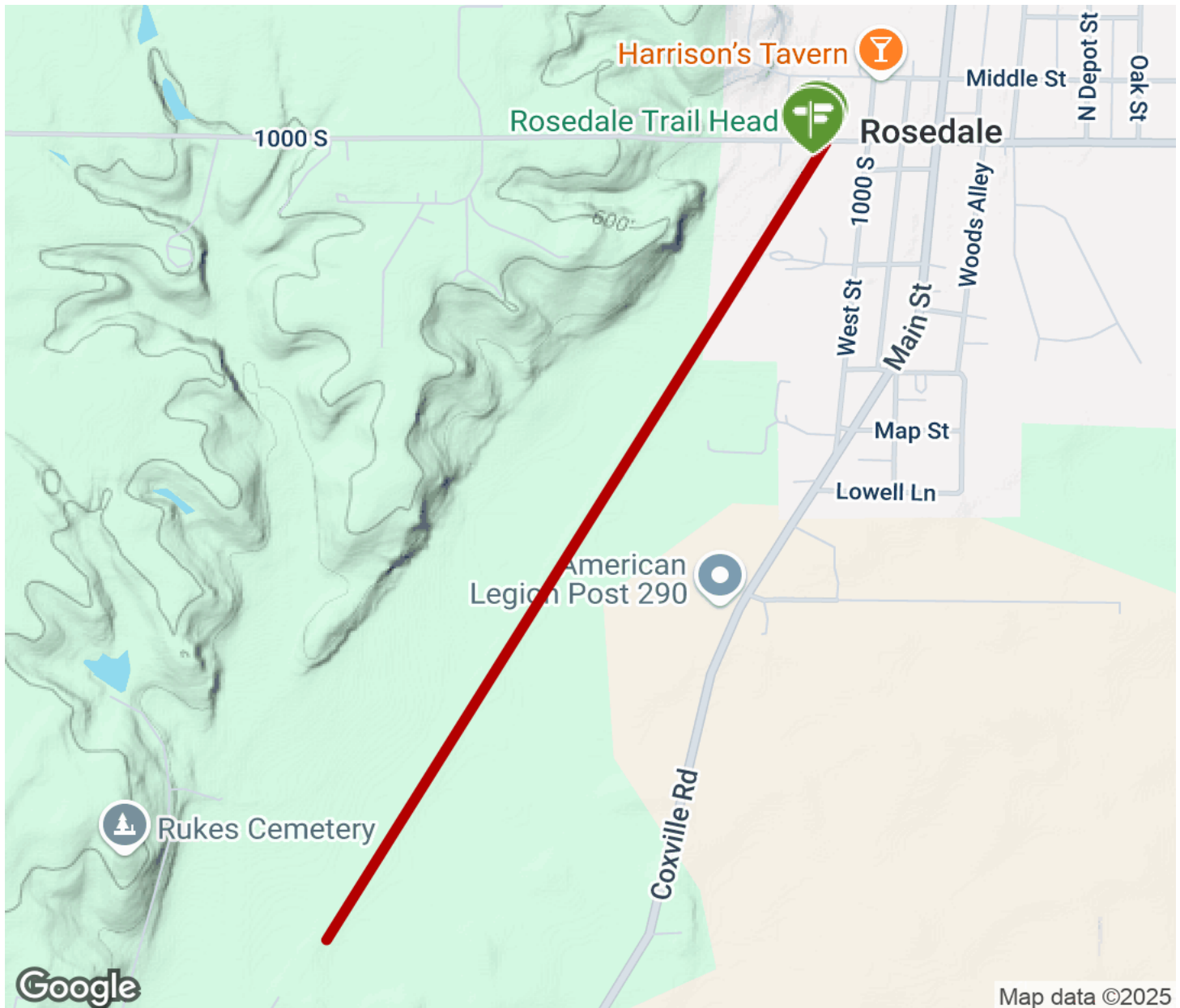
Parking & Trail Access

Parking is available at the trailhead on Central Street (see map for details).



Parke Community Rail Trail

Indiana



Trailhead



Restroom



Parking



Water Fountain



Tunnel



TrailLink
by Rails-to-Trails Conservancy

TrailLink.com