



2025

TrailLink Unlimited 

Guides



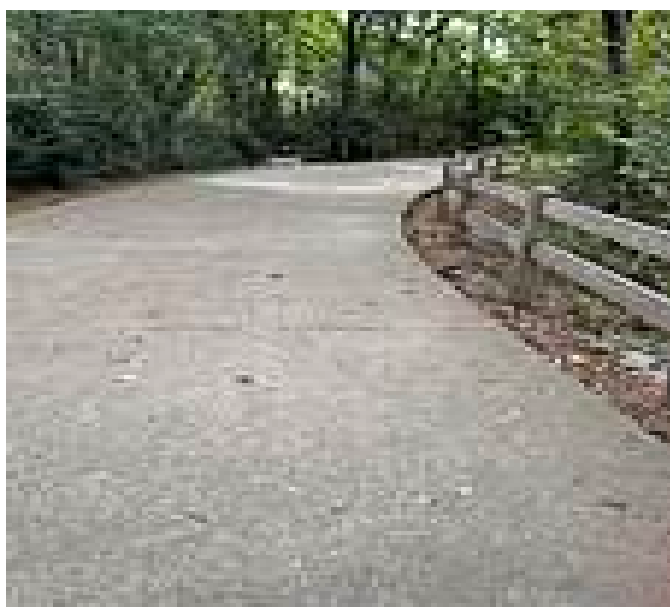
**Walnut Creek
Linear Park**
Texas



Walnut Creek Linear Park

Texas

The Walnut Creek Linear Park is 1.9 miles of sun-dappled asphalt threading through five neighborhood parks, three residential



The Walnut Creek Linear Park is 1.9 miles of sun-dappled asphalt threading through five neighborhood parks, three residential communities and two schools. Anchored by Town Park to the east and the James McKnight Park to the west, the greenway delivers an immersive experience along its length. Apart from the parks and the myriad of activities therein, the trail also includes birdwatching stations, nature overlooks and picnic stations. The historic railroad bridge, Jeffries Crossing completes the scenic experience.

Work is underway to extend the linear park, which will be about 9 miles total once complete.



TrailLink
by Rails-to-Trails Conservancy

TrailLink.com



Walnut Creek Linear Park

Texas

States: Texas

Counties: Tarrant

Length: 1.9miles

Trail end points: Town Park to James
McKnight Park

Trail surfaces: Asphalt, Concrete

Trail category: Greenway/Non-RT

Trail activities: Bike, Wheelchair
Accessible, Walking

Parking & Trail Access

Trailheads can be found at any of the five parks: Town Park, Katherine Rose Memorial Park, Hardy Allmon Soccer Complex, Palm Court, James McKnight Park West and James McKnight Park East.

To get to Katherine Rose Park, which has the largest parking area:

From Fort Worth, take Highway 287 south to Mansfield, TX, take the Walnut Creek exit south. Drive 1 mile, parking for this park is on both sides of Walnut Creek Drive.

From Arlington, TX, take FM 157 (Cooper Street) south to US 287, go south to the Walnut Creek exit, go south about 1 mile. Parking for this park is on both sides of Walnut Creek Drive.

From Dallas, TX, take Interstate 20 west, exit SH 360 south to Broad Street. Go west on Broad Street to Walnut Creek. Turn right (north) on Walnut Creek Drive. About 1/2 mile will be parking on both sides of Walnut Creek Drive for this park.



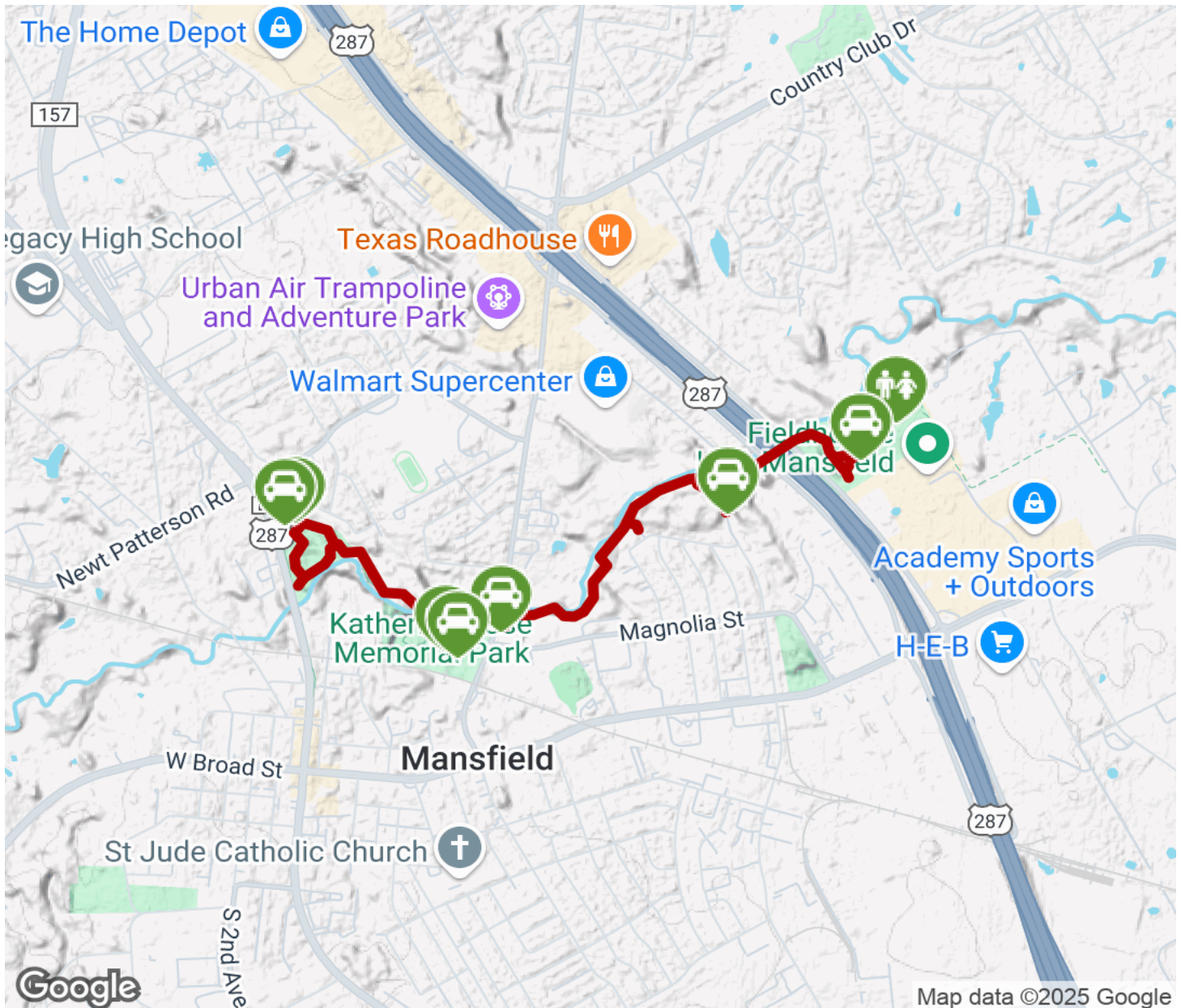
TrailLink
by Rails-to-Trails Conservancy

TrailLink.com



Walnut Creek Linear Park

Texas



Trailhead



Restroom



Parking



Water Fountain



Tunnel



TrailLink
by Rails-to-Trails Conservancy

TrailLink.com