



2025

TrailLink Unlimited 

Guides   



Al's Way
Wyoming



Al's Way Wyoming

Al's Way begins in the commercial heart of Glenrock, once a supply stop on the Oregon Trail and today a small town situated 25 miles



After passing the park, the trail breaks from the trees and unfolds into an open area of scrublands and sage brush, continuing past Glenrock High School and Grant Elementary School before ending in ranchlands just past Meadowlark Street. The route includes a trestle bridge and an unusual feature: a petrified wood arrangement donated by a local family.

Al's Way begins in the commercial heart of Glenrock, once a supply stop on the Oregon Trail and today a small town situated 25 miles east of the larger community of Casper in eastern Wyoming. Both this trail in Glenrock and a slightly longer [rail-trail running through Casper](#) follow the same corridor of the former Chicago North Western Railroad. Glenrock's trail, opened in 1994, was named after Al Finch, a local high school coach.

From N. 9th Street, the rail-trail heads east, quickly whisking travelers into nature along a narrow paved pathway lined with trees. Trail users will have a lovely view of Deer Creek, then skirt the southern end of Glenrock Town Park, a popular recreational spot with its picnic areas, playground equipment, baseball fields, and tennis courts.



Al's Way

Wyoming

States: Wyoming

Counties: Converse

Length: 2.9miles

Trail end points: N 9rd St, just north of W
Aspen St to Meadowlark St

Trail surfaces: Asphalt

Trail category: Rail-Trail

Trail activities: Bike, Inline

Skating, Wheelchair Accessible, Walking

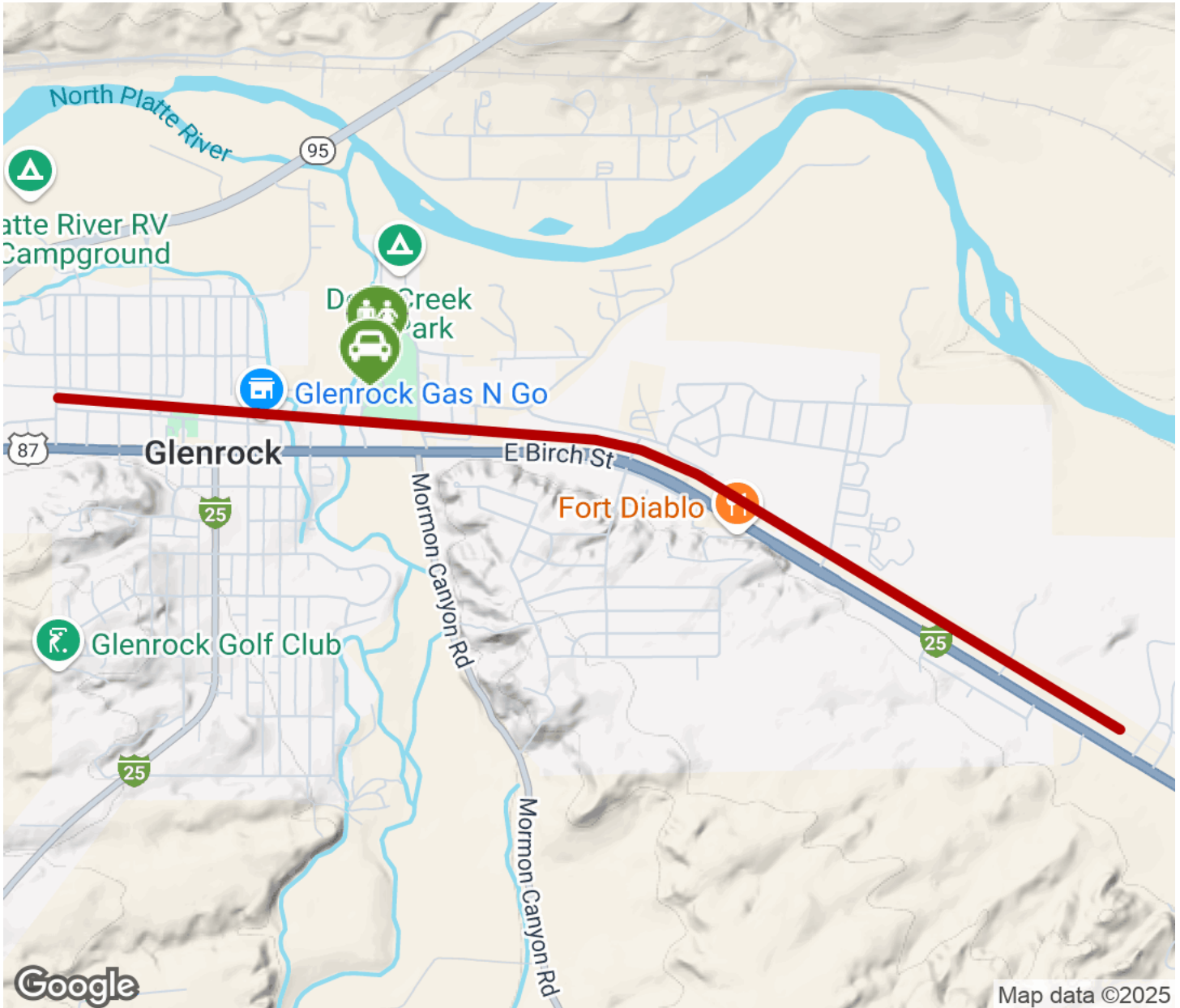
Parking & Trail Access

Parking is available in Glenrock Town Park off Town Park Road.



Al's Way

Wyoming



Trailhead



Restroom



Parking



Water Fountain



Tunnel



TrailLink
by Rails-to-Trails Conservancy

TrailLink.com