



2026

TrailLink Unlimited 

Guides



**Eisenhower
Avenue Trail**
Virginia



Eisenhower Avenue Trail

Virginia

Although it parallels Eisenhower Avenue, this paved pathway is not without its charms. On its west end, Alexandria's Eisenhower



Towards the east end of the trail, the surface changes from asphalt to concrete and you'll pass several restaurants and businesses. On this end of the trail, there is also a fairly steep section as you climb a bridge up and over several major roadways. The trail ends adjacent to Hoffman Town Center, a busy mixed-use area which includes a movie theater, and the Eisenhower Metro Station.

Although it parallels Eisenhower Avenue, this paved pathway is not without its charms. On its west end, Alexandria's Eisenhower Avenue Trail begins in Hensley Park, which offers plentiful parking and athletic facilities.

As you travel east from the park, you'll have the roadway to your left and Cameron Run to your right. (For this reason, the trail is also sometimes referred to as the Cameron Run Bike Trail.) The waterway is quite pretty with a tree-lined grassy embankment. At this end, you can also connect to the [Holmes Run Trail](#), another paved route which heads northwest through the city. On the opposite (north) side of Eisenhower Avenue, you'll also find Cameron Run Regional Park and Great Waves Waterpark, both popular for outdoor fun in the summer.



Eisenhower Avenue Trail

Virginia

States: Virginia

Counties: Alexandria

Length: 2miles

Trail end points: Eisenhower Avenue and Mill
Road to Hensley Park

Trail surfaces: Asphalt, Concrete

Trail category: Greenway/Non-RT

Trail activities: Bike, Inline

Skating, Walking, Wheelchair Accessible

Parking & Trail Access

Parking is available on the west end of the trail in Hensley Park (4200 Eisenhower Avenue). You can also access the trail on its east end using public transportation via the Eisenhower Metro Station.



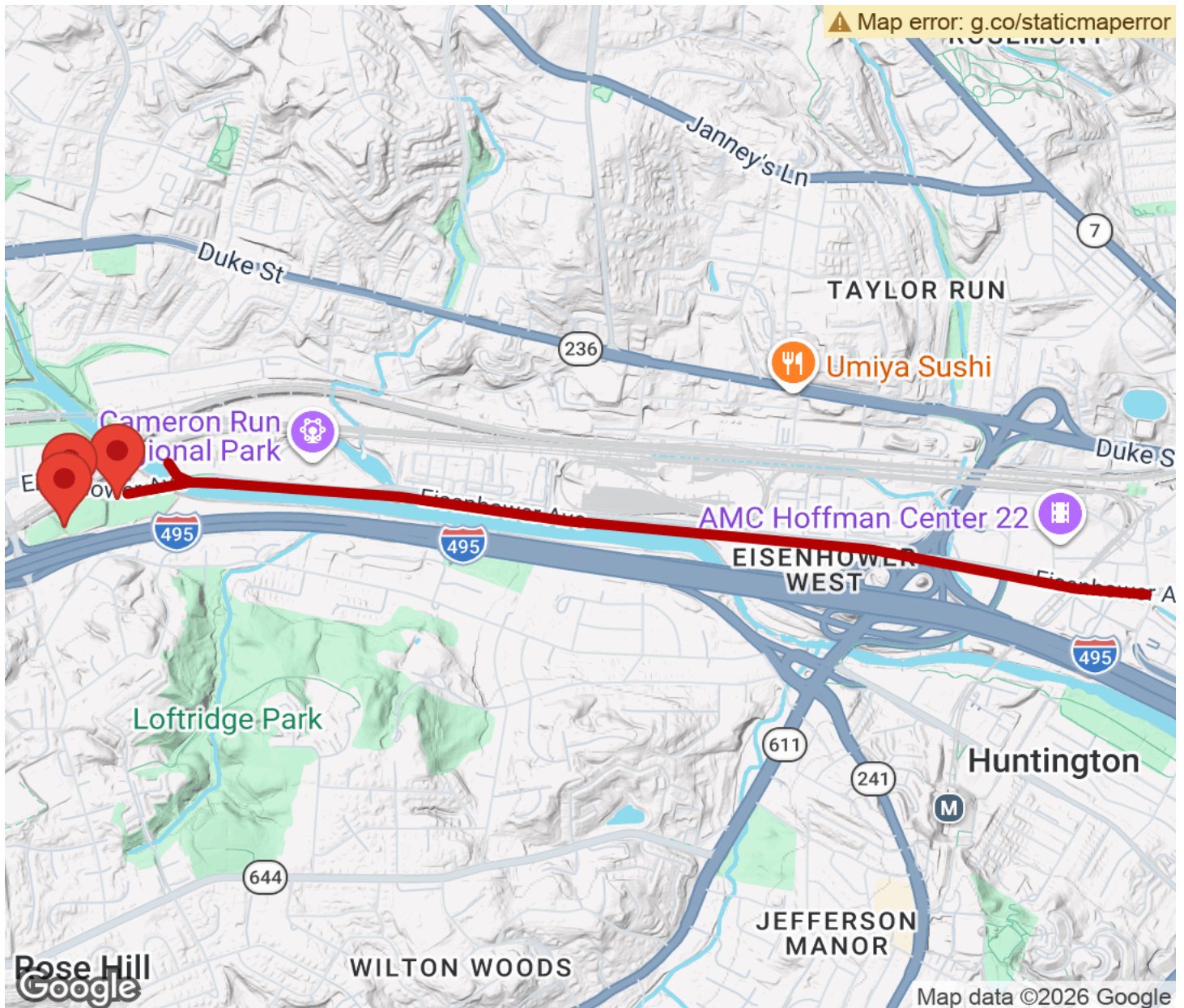
TrailLink
by Rails-to-Trails Conservancy

TrailLink.com



Eisenhower Avenue Trail

Virginia



Trailhead



Restroom



Parking



Water Fountain



Tunnel



TrailLink
by Rails-to-Trails Conservancy

TrailLink.com