



2025

TrailLink Unlimited 

Guides   



**Oklawaha
Greenway**
North Carolina



Oklawaha Greenway

North Carolina

For lovers of outdoors, the Oklawaha Greenway presents a natural escape in an otherwise suburban setting. The greenway trails Mud



feet wide and 3.5 miles long, it's relatively flat throughout, making it great for users of all ages and abilities. There are road crossings at grade; there are also bridges over the marsh and one below grade crossing where the pathway ducks under Four Seasons Highway.

Future plans may extend the trail south from Jackson Park. This would bring total trail length to 7 miles.

For lovers of outdoors, the Oklawaha Greenway presents a natural escape in an otherwise suburban setting. The greenway trails Mud Creek for a big part of its length, beginning its northwesterly course at Jackson Park, through Patton Park and terminating at Berkeley Mills Park. Along the way, travelers become immersed in a variety of scenery changes, from manicured green spaces, to native marshes and forests. The greenway offers opportunities for wildlife and birdwatching; the wetland has an array of biological diversity which includes mammals, reptiles and amphibians. Signage provides information to curious travelers about the local flora and fauna.

The trail is open to shared use by a variety of users, including pedestrians, cyclists and rollerbladers. At 10



TrailLink
by Rails-to-Trails Conservancy

TrailLink.com



Oklawaha Greenway

North Carolina

States: North Carolina

Counties: Henderson

Length: 3.5miles

Trail end points: Berkeley Mills Park to
Jackson Park

Trail surfaces: Asphalt

Trail category: Greenway/Non-RT

Trail activities: Bike, Inline

Skating, Wheelchair Accessible, Walking

Parking & Trail Access

Parking and other amenities including restrooms and picnic tables can be found at any other parks along the greenway: Jackson Park (Jackson Park Rd), Patton Park and Berkeley Mills Park.



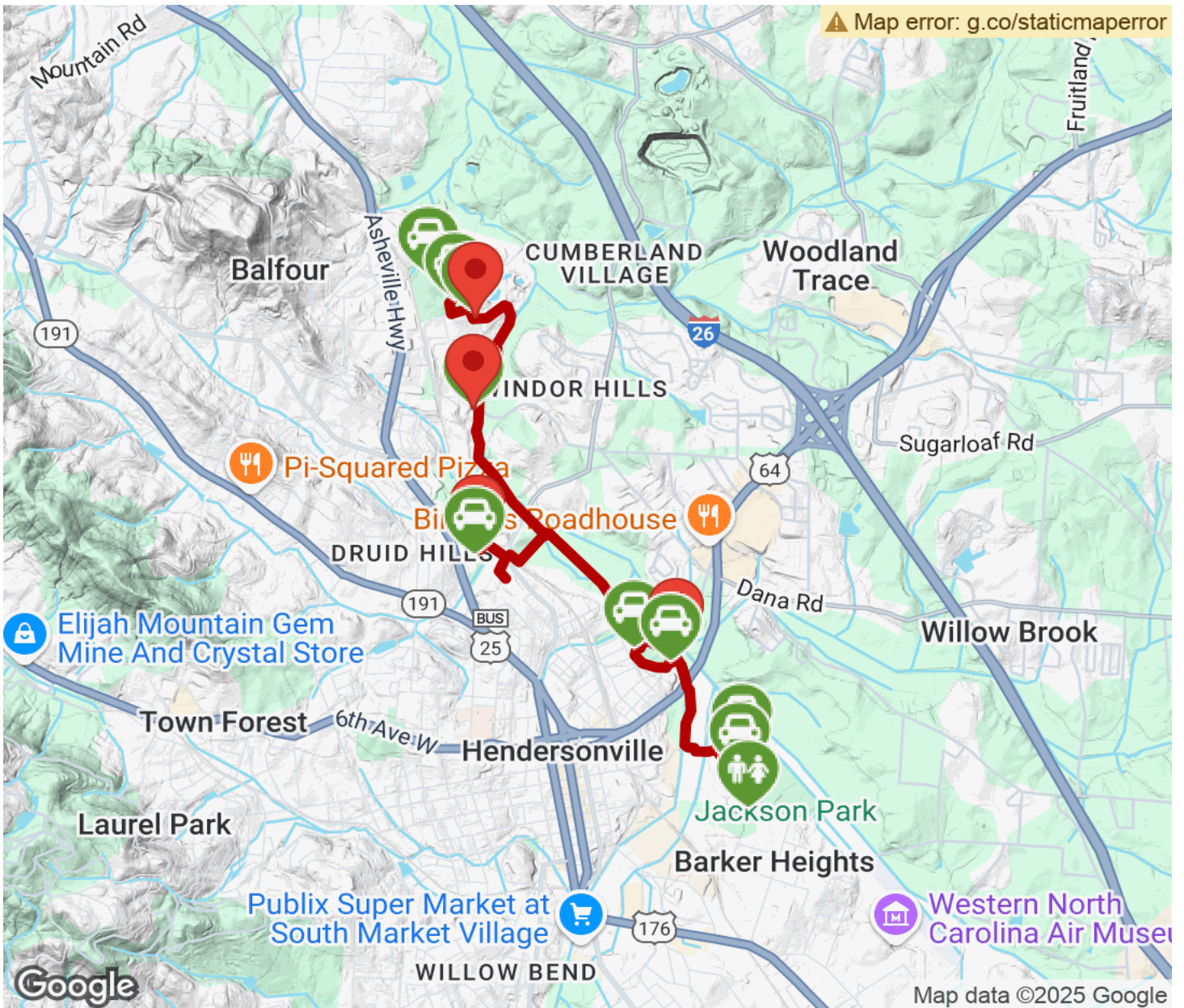
TrailLink
by Rails-to-Trails Conservancy

TrailLink.com



Oklawaha Greenway

North Carolina



Trailhead



Restroom



Parking



Water Fountain



Tunnel



TrailLink
by Rails-to-Trails Conservancy

TrailLink.com