



2024

TrailLink Unlimited



Guides



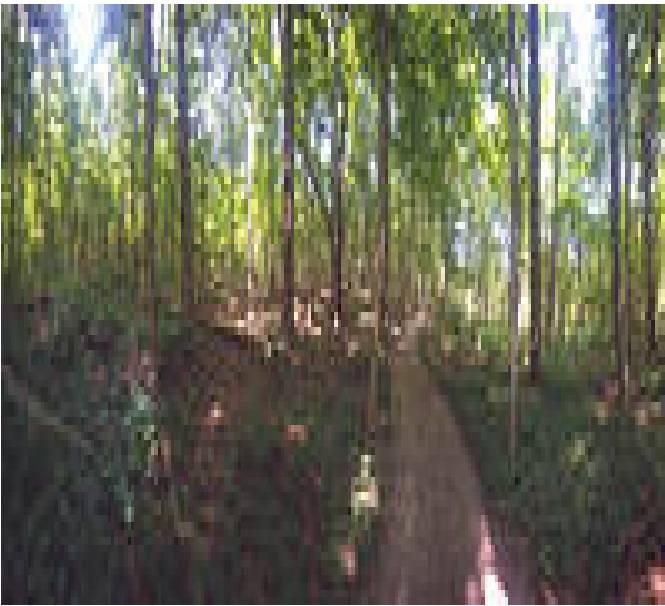
**Fall Creek  
Trail (IN)**  
*Indiana*



## Fall Creek Trail (IN)

Indiana

*Providing a slice of scenic beauty in an urban setting, the Fall Creek Trail follows the titular creek along a quiet, forested corridor in*



via a short path off the main trail, and continues along the creek until it reaches 38th Street. Here, the route crosses the creek again as the trail uses the sidewalk on the street before continuing off-road parallel to the railroad tracks. This section of the trail runs right next to the Indiana Fair Grounds, which operates trains on the adjacent tracks to shuttle people around when the fair is open. From this point until the end, the trail does not cross the road once, providing an unparalleled off-road experience for walkers and bikers alike. Heading through gradually quieter neighborhoods in the northeast suburbs of the city, the trail diverges at the very end to offer access to Skiles Test Nature Park and Fort Harrison State Park, two fantastic natural gems of the area.

Plans are in the work to extend the Fall Creek Trail even further to the north, connecting with an unpaved 1.5 mile loop trail near a dam in the creek. As it stands, however, the existing trail is already a huge asset to the Indianapolis trails system and is well worth checking out.

Providing a slice of scenic beauty in an urban setting, the Fall Creek Trail follows the titular creek along a quiet, forested corridor in northern Indianapolis. Offering a variety of recreation opportunities, the trail also connects to the popular [Monon Trail](#), which enables users to extend their trip to the north or the south.

The trail's southwestern end begins just a few blocks south of the renowned Children's Museum of Indianapolis, in George E. Kessler Park. The trail heads north and east along Fall Creek, an important body of water in local history. Crossing over the creek via Central Avenue, the trail continues through a pleasant and shady corridor, providing a tranquil and safe journey that is uninterrupted by any street crossings. The trail heads under a bridge that contains the Monon Trail, accessible



# Fall Creek Trail (IN)

Indiana

**States:** Indiana

**Counties:** Marion

Length: 6.9miles

**Trail end points:** George E. Kessler Park to Fort Harrison State Park

**Trail surfaces:** Asphalt

**Trail category:** Rail-Trail

**Trail activities:** Bike, Inline

Skating, Wheelchair Accessible, Walking, Cross

Country Skiing

## Parking & Trail Access

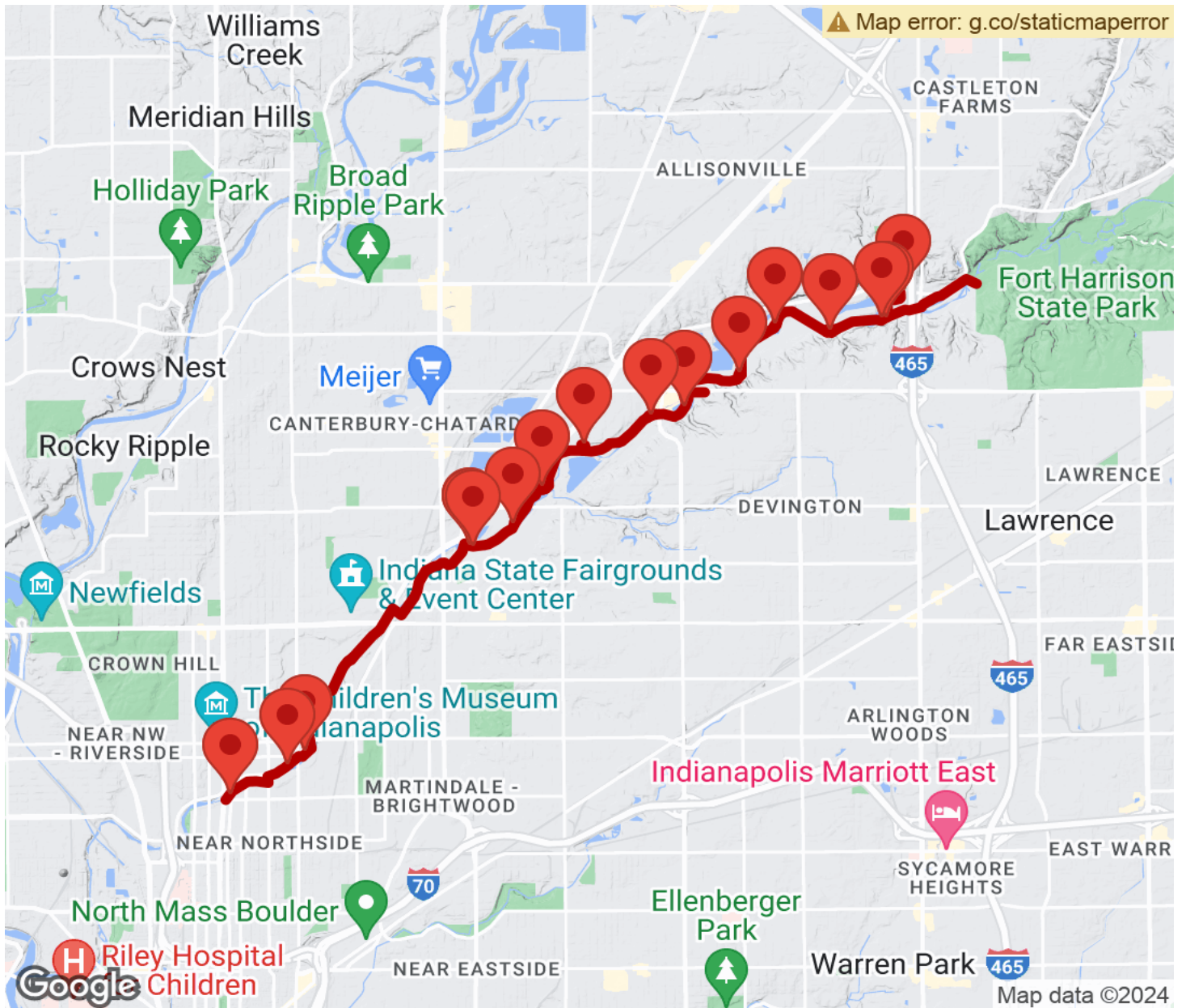
Parking is available at the northern trailhead in Skiles Test Nature Park, at a lot off of E Fall Creek Pkwy N and Lakeway Drive, at Fall Creek & 30th Park, and via a dedicated lot at E Fall Creek Pkwy N and N Park Ave.

To reach the southern trailhead from downtown Indianapolis, simply take Meridian Street all the way north until you reach E 25th St - the trail begins on the right in George Kessler Park.



# Fall Creek Trail (IN)

Indiana



Trailhead



Restroom



Parking



Water Fountain



Tunnel



**TrailLink**  
by Rails-to-Trails Conservancy

**TrailLink.com**