



2025

TrailLink Unlimited 

Guides   



**Lakeside Park  
Trail**  
*Missouri*



## Lakeside Park Trail

Missouri

*While exploring the seven mile Lakeside Park Trail you are treated to views of the 140 acre lake at Lakeside Park. Lakeside Park Trail's*



While exploring the seven mile Lakeside Park Trail you are treated to views of the 140 acre lake at Lakeside Park. Lakeside Park Trail's asphalt and concrete surfaces are ideal for biking, walking, and inline skating. The lake not only offers beautiful views, but a great fishing spot. Boats are available for anyone who wants to get out on the lake to explore. The park offers places to eat, camp, and even test out your archery skills. Lakeside Park Trail is just the beginning of the adventure that awaits you. Lakeside Park Trail is part of the northern tip of Dardenne Greenway, which will eventually connect several communities throughout Missouri. Bring the family and enjoy this loop time and time again.



# Lakeside Park Trail

*Missouri*

**States:** Missouri

**Counties:** St. Charles

Length: 7miles

**Trail end points:** Lakeside Park Drive to  
Spencer Road

**Trail surfaces:** Asphalt, Concrete

**Trail category:** Greenway/Non-RT

**Trail activities:** Bike, Fishing, Inline  
Skating, Walking

## Parking & Trail Access

Parking is available at 370 Lakeside Park. (1000 Lakeside Park Drive). Parking is also available at St. Peters City Hall.(1 St Peters Centre Blvd, St Peters, MO 63376).



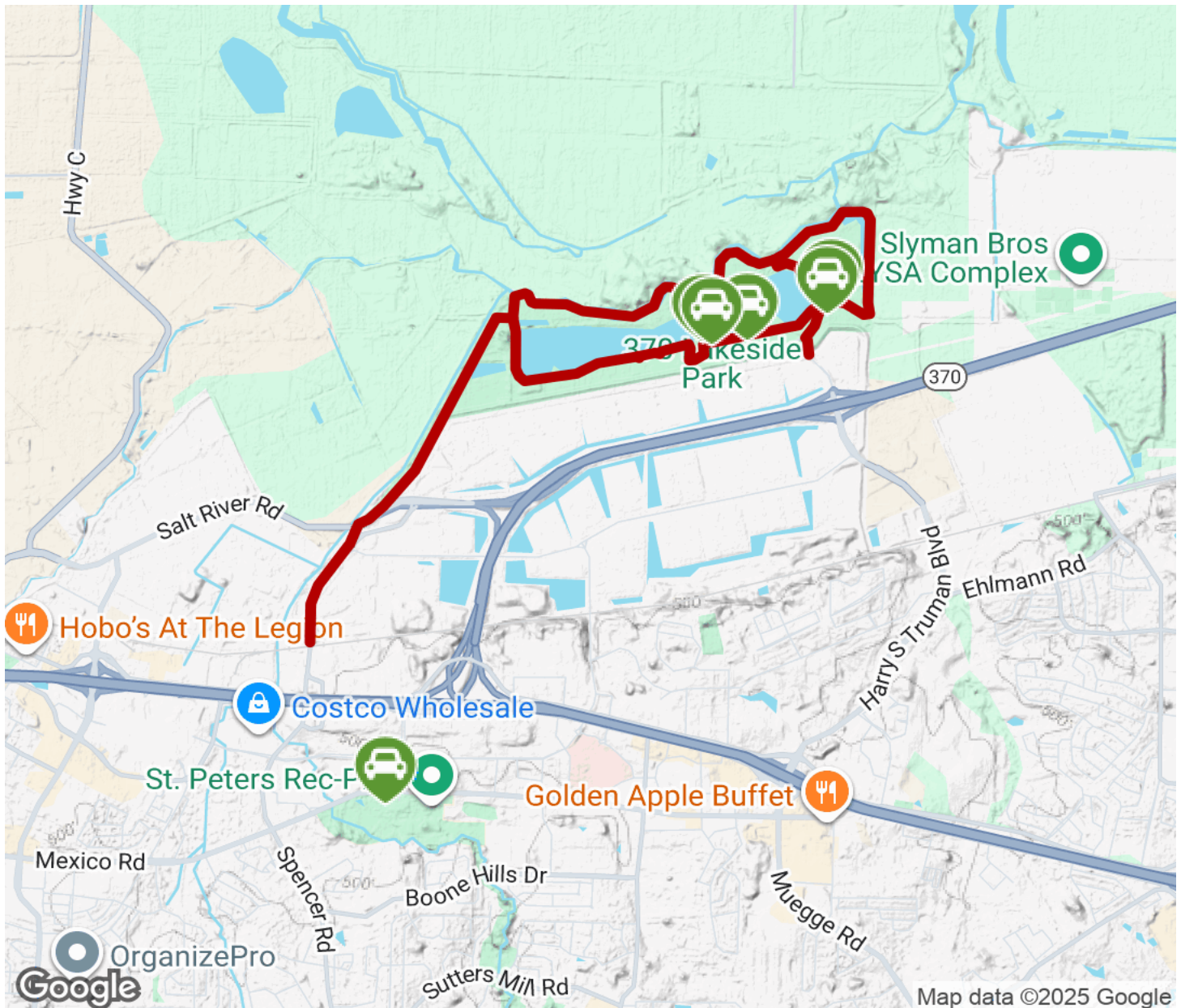
**TrailLink**  
by Rails-to-Trails Conservancy

**TrailLink.com**



# Lakeside Park Trail

Missouri



Trailhead



Restroom



Parking



Water Fountain



Tunnel



**TrailLink**  
by Rails-to-Trails Conservancy

**TrailLink.com**