



2026

TrailLink Unlimited 

Guides



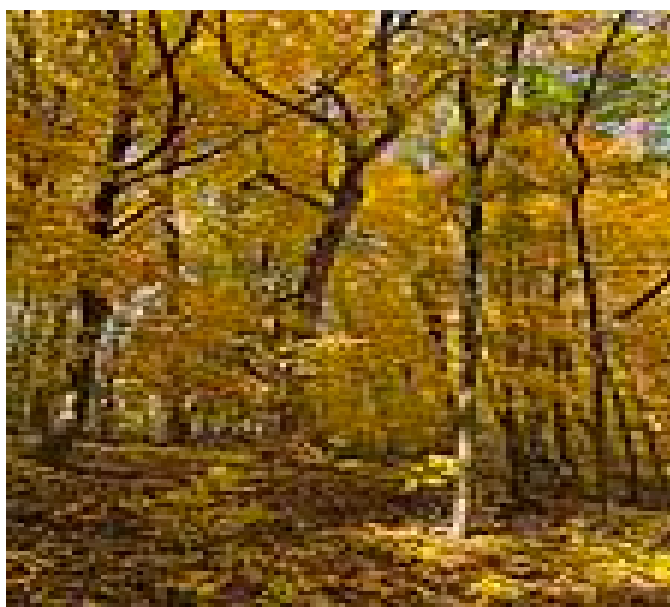
**Elm Creek
Park Reserve
Trails**
Minnesota



Elm Creek Park Reserve Trails

Minnesota

The Elm Creek Park Reserve is an outdoor lovers' dream. At 4,900 acres, it's the largest park in Hennepin County. The park provides



particularly demanding ride; it's a coaster of miles of punishing climbs and exhilarating downhill runs. The northern section tends to be both flatter and quieter; you might see the occasional bicyclist. Take advantage of this to glide along the asphalt while enjoying unspoiled panoramas. The trail is shared so cyclists should be aware of walkers and runners.

Connections

At the southern end of the park, trail users can connect to the [Rush Creek Regional Trail](#).

The Elm Creek Park Reserve is an outdoor lovers' dream. At 4,900 acres, it's the largest park in Hennepin County. The park provides enough amenities to keep people coming all year round. Cyclists especially will enjoy the 18 miles of well-paved twists, turns, climbs and dips. (Separately, there are an additional 13 miles of mountain biking trails).

About the Route

The trails circle round the park in a loop, offering an interesting way to experience the diversity of landscapes, flora and fauna that the reserve has to offer. Within the loop, riders will wind through open prairie, quiet wooded corridors, lakes, waterways and wetlands. For those seeking a challenge, the southern loop provides a



Elm Creek Park Reserve Trails

Minnesota

States: Minnesota

Counties: Hennepin

Length: 18.3miles

Trail end points: Elm Creek Park Reserve to
Elm Creek Park Reserve

Trail surfaces: Asphalt

Trail category: Greenway/Non-RT

Trail activities: Bike, Walking, Wheelchair
Accessible

Parking & Trail Access

The Elm Creek Park Reserve Trails run through their namesake Elm Creek.

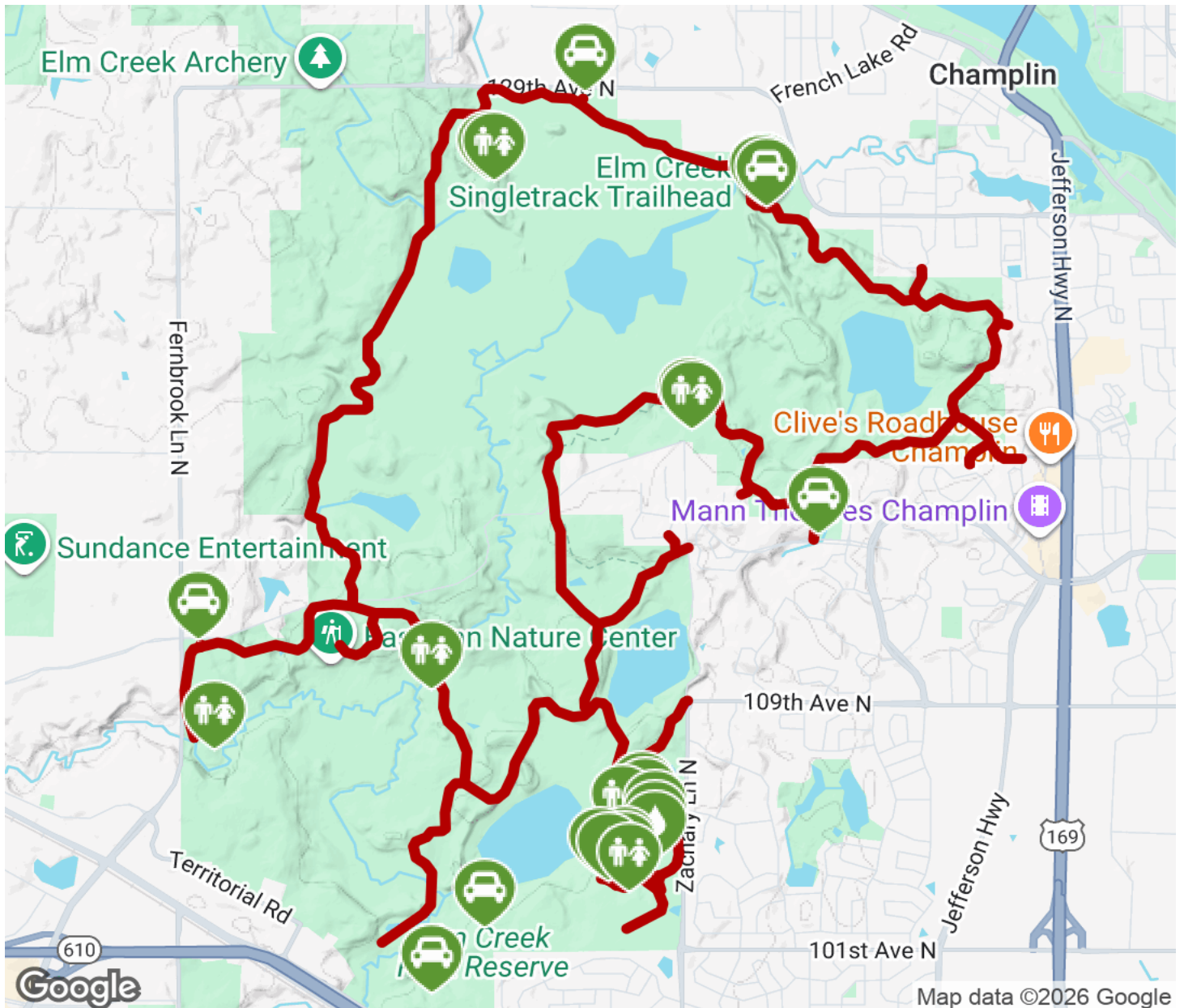
Parking is available at:

- 1688 W Hayden Lake Rd. (Champlin)
- 11750 Zachary Ln. N (Champlin)
- 12420 James Deane Pkwy (Maple Grove)



Elm Creek Park Reserve Trails

Minnesota



Trailhead



Restroom



Parking



Water Fountain



Tunnel



TrailLink
by Rails-to-Trails Conservancy

TrailLink.com