



2025

TrailLink Unlimited 

Guides   



**St. Joseph  
Riverwalk**  
*Missouri*



## St. Joseph Riverwalk

Missouri

*The St. Joseph Riverwalk, sometimes referred to as the Riverfront Trail, hugs the eastern bank of the Missouri River in this*



miles west of the city's sprawling [Urban Trail](#) network.

The St. Joseph Riverwalk, sometimes referred to as the Riverfront Trail, hugs the eastern bank of the Missouri River in this northwestern Missouri community. The paved pathway spans just over two miles from Heritage Park, through Riverfront Park, and south to Robidoux Landing. Along the way, travelers can enjoy scenic overlooks and interpretative signage about Native Americans and Joseph Robidoux (for whom the city was named).

A popular trailside attraction is the Remington Nature Center, which offers educational displays on Native American culture and the region's plant and wildlife species, including a 7,000-gallon fish aquarium.

If you're up for more riding, the Riverwalk is only about 1.5



# St. Joseph Riverwalk

Missouri

**States:** Missouri

**Counties:** Buchanan

Length: 2.3miles

**Trail end points:** Heritage Park to Riverfront  
Park

**Trail surfaces:** Concrete

**Trail category:** Greenway/Non-RT

**Trail activities:** Bike, Inline

Skating, Wheelchair Accessible, Walking

## Parking & Trail Access

Parking and bathrooms are available at the northern end of the trail in Heritage Park (2202 Water Works Road). A little farther south, parking is also available at the Remington Nature Center (2502 McArthur Drive).



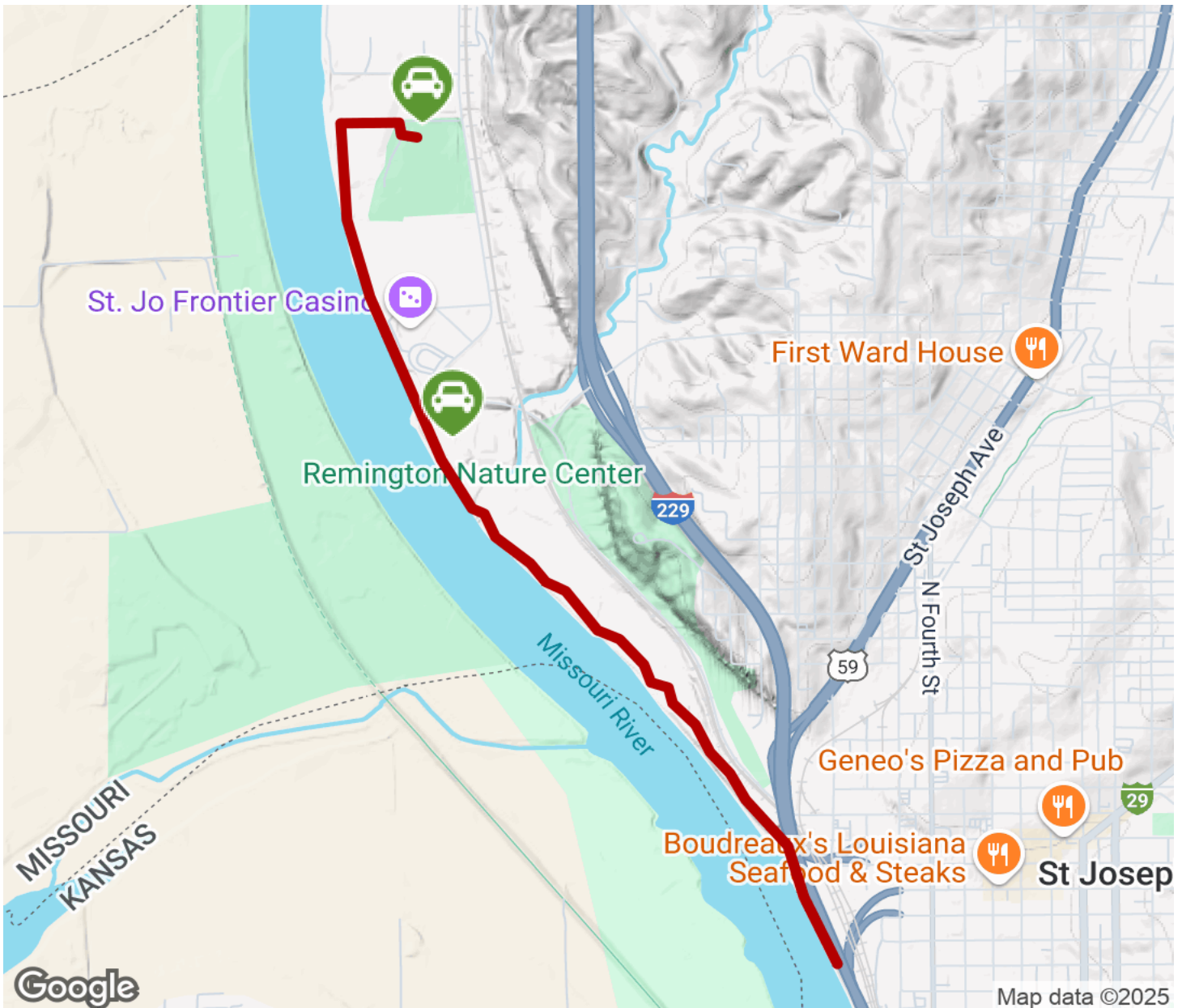
**TrailLink**  
by Rails-to-Trails Conservancy

**TrailLink.com**



# St. Joseph Riverwalk

Missouri



Trailhead



Restroom



Parking



Water Fountain



Tunnel



**TrailLink**  
by Rails-to-Trails Conservancy

**TrailLink.com**