



2025

TrailLink Unlimited 

Guides



**St. Joseph
Riverwalk**
Missouri



St. Joseph Riverwalk

Missouri

The St. Joseph Riverwalk, sometimes referred to as the Riverfront Trail, hugs the eastern bank of the Missouri River in this



miles west of the city's sprawling [Urban Trail](#) network.

The St. Joseph Riverwalk, sometimes referred to as the Riverfront Trail, hugs the eastern bank of the Missouri River in this northwestern Missouri community. The paved pathway spans just over two miles from Heritage Park, through Riverfront Park, and south to Robidoux Landing. Along the way, travelers can enjoy scenic overlooks and interpretative signage about Native Americans and Joseph Robidoux (for whom the city was named).

A popular trailside attraction is the Remington Nature Center, which offers educational displays on Native American culture and the region's plant and wildlife species, including a 7,000-gallon fish aquarium.

If you're up for more riding, the Riverwalk is only about 1.5



St. Joseph Riverwalk

Missouri

States: Missouri

Counties: Buchanan

Length: 2.3miles

Trail end points: Heritage Park to Riverfront
Park

Trail surfaces: Concrete

Trail category: Greenway/Non-RT

Trail activities: Bike, Inline

Skating, Walking, Wheelchair Accessible

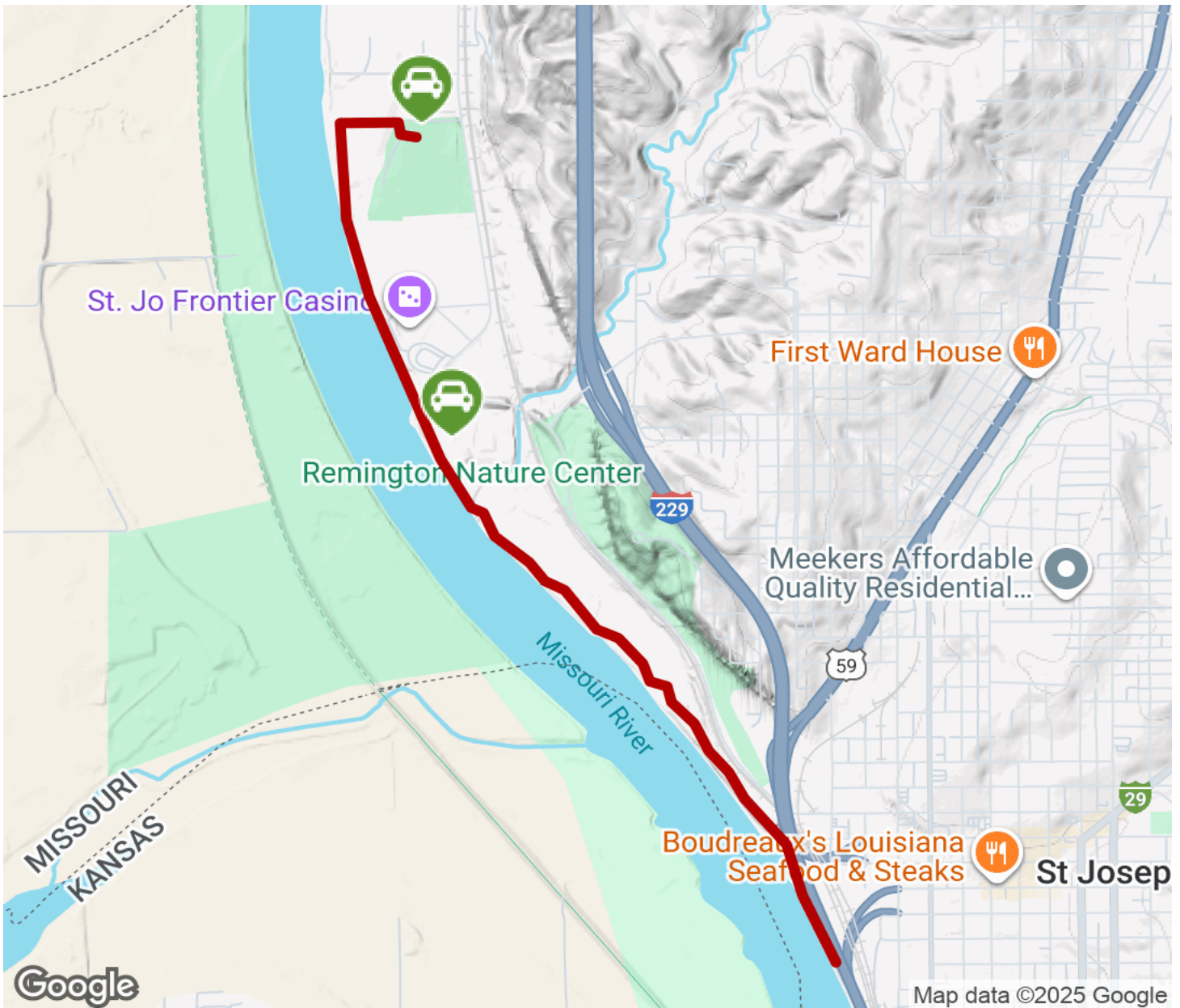
Parking & Trail Access

Parking and bathrooms are available at the northern end of the trail in Heritage Park (2202 Water Works Road). A little farther south, parking is also available at the Remington Nature Center (2502 McArthur Drive).



St. Joseph Riverwalk

Missouri



Trailhead



Restroom



Parking



Water Fountain



Tunnel



TrailLink
by Rails-to-Trails Conservancy

TrailLink.com