



2024

TrailLink Unlimited 

Guides



**West Foss  
Farm Trail**  
*New Hampshire*



## West Foss Farm Trail

*New Hampshire*

*The 83 acre West Foss Farm is one of the properties owned by the University of New Hampshire, Durham. The property was*



The 83 acre West Foss Farm is one of the properties owned by the University of New Hampshire, Durham. The property was purchased from the Boston & Maine Railroad company, and features a 1.6 stretch of rail-trail that starts at Mill Road and runs south. The farm is a popular recreation spot both for the UNH community, as well as members of the public. Most kinds of low impact, non-motorized uses are allowed, including mountain biking (even though it's not encouraged). The farm also serves as an outdoor classroom, a space for education and research for students of the life sciences.



# West Foss Farm Trail

*New Hampshire*

**States:** New Hampshire

**Counties:** Strafford

Length: 1.6miles

**Trail end points:** Mill Road to West Foss Farm

**Trail surfaces:** Dirt

**Trail category:** Rail-Trail

**Trail activities:** Bike,Mountain

Biking,Walking

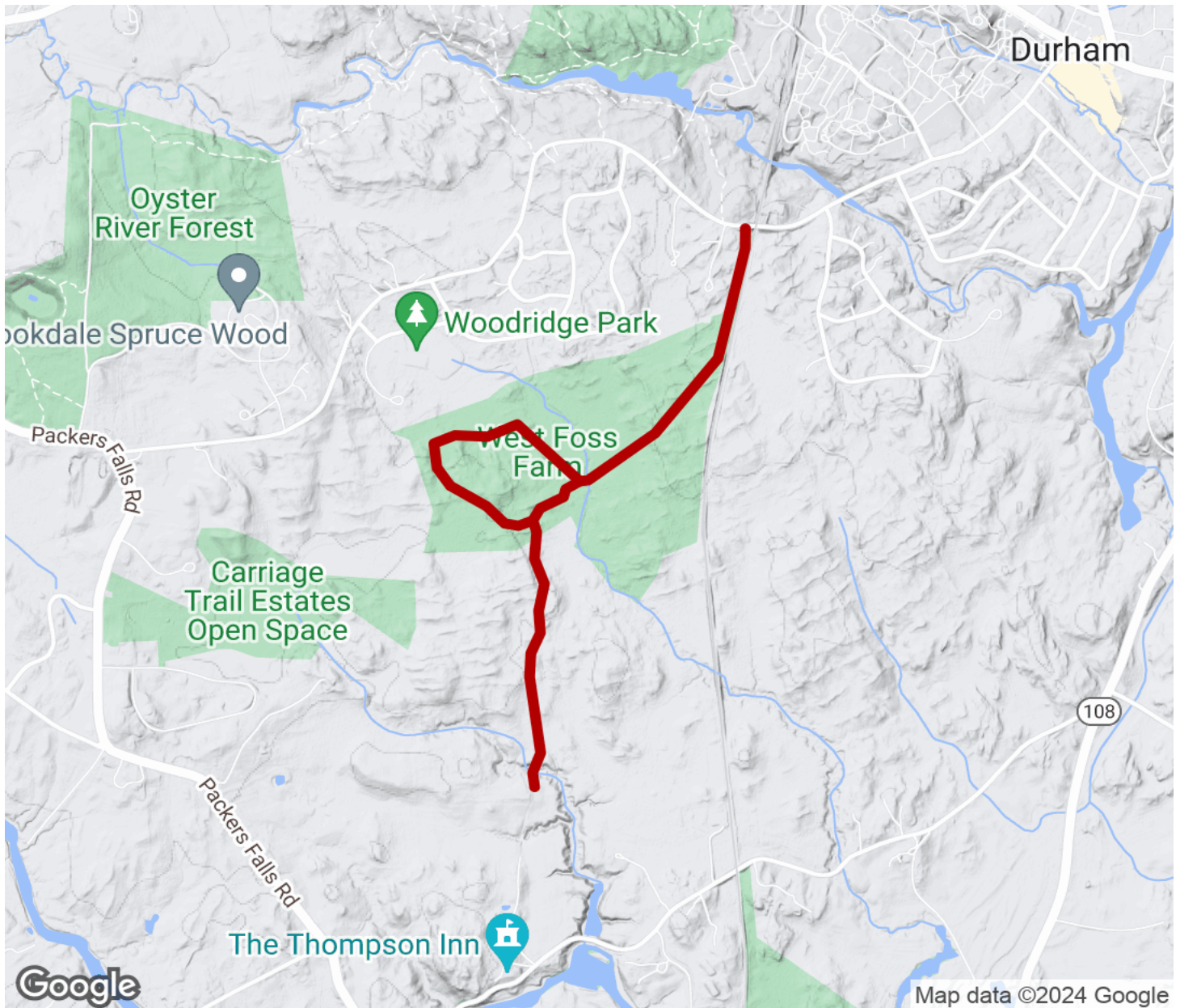
## Parking & Trail Access

There is no designated parking for this trail. Beginning on the east side of campus, on Mill Road, head west (away from Main Street) until you get to the overpass above the existing railroad. Take the immediate left, that dirt road leads to the West Foss Farm gate.



# West Foss Farm Trail

New Hampshire



Trailhead



Restroom



Parking



Water Fountain



Tunnel



**TrailLink**  
by Rails-to-Trails Conservancy

**TrailLink.com**