



2026

TrailLink Unlimited 

Guides



**Historic
Bridgeport
Walking Trail**
Alabama



Historic Bridgeport Walking Trail

Alabama

The Historic Bridgeport Walking Trail begins at the Bridgeport Depot Museum and leads to the Tennessee River. Once at the



The Historic Bridgeport Walking Trail begins at the Bridgeport Depot Museum and leads to the Tennessee River. Once at the shoreline, you walk across the Tennessee River on a converted railroad bridge. An active railroad bridge runs parallel to the pedestrian bridge. Stop and enjoy the river traffic below. And, you can enjoy the historic museum before and after your walk.



Historic Bridgeport Walking Trail

Alabama

States: Alabama

Counties: Jackson

Length: 0.8miles

Trail end points: Bridgeport Depot Museum to
Across the Tennessee River

Trail surfaces: Asphalt,Cinder,Concrete

Trail category: Rail-Trail

Trail activities: Walking,Wheelchair
Accessible

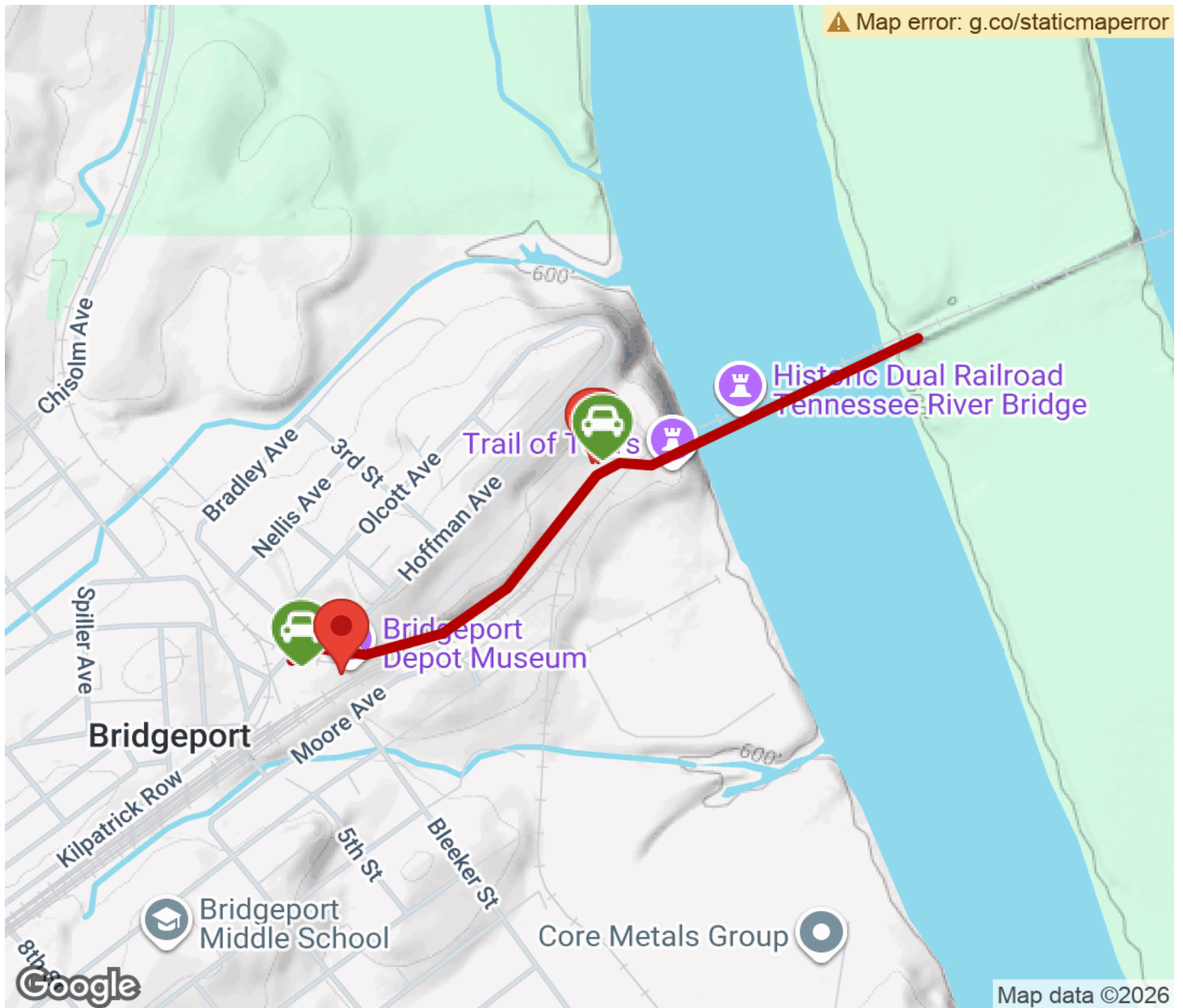
Parking & Trail Access

Take US-72 to the Bridgeport exit. Travel into town on SR-277. From South Pittsburg, Tennessee turn left at the traffic light onto Broadway Avenue. Broadway Avenue will take you to the museum and the beginning of the walking path.



Historic Bridgeport Walking Trail

Alabama



Trailhead



Restroom



Parking



Water Fountain



Tunnel



TrailLink
by Rails-to-Trails Conservancy

TrailLink.com