



2025

TrailLink Unlimited 

Guides   



**Visitation
Valley
Greenway**
California



Visitacion Valley Greenway

California

The Visitacion Valley Greenway is a recreational gem tucked into a residential neighborhood in southern San Francisco. The paved



The Visitacion Valley Greenway is a recreational gem tucked into a residential neighborhood in southern San Francisco. The paved pathway connects a series of small parks that offer a plethora of fun opportunities for families: a butterfly garden, herb garden, picnic areas, a playground, whimsical artwork and other types of community gardens and play spaces. Clustered near the southern end of the trail is the local elementary school, library, post office, and other community facilities, so the greenway also provides a pleasant way for residents to reach them.



Visitation Valley Greenway

California

States: California

Counties: San Francisco

Length: 0.5miles

Trail end points: Tioga Ave. between Delta and Rutland streets to Leland Ave. and Peabody St.

Trail surfaces: Concrete

Trail category: Greenway/Non-RT

Trail activities: Bike, Inline

Skating, Wheelchair Accessible, Walking

Parking & Trail Access

Metered parking is available on the southern end of the trail along Leland Avenue. On-street parking is also available along the other streets that the greenway crosses.



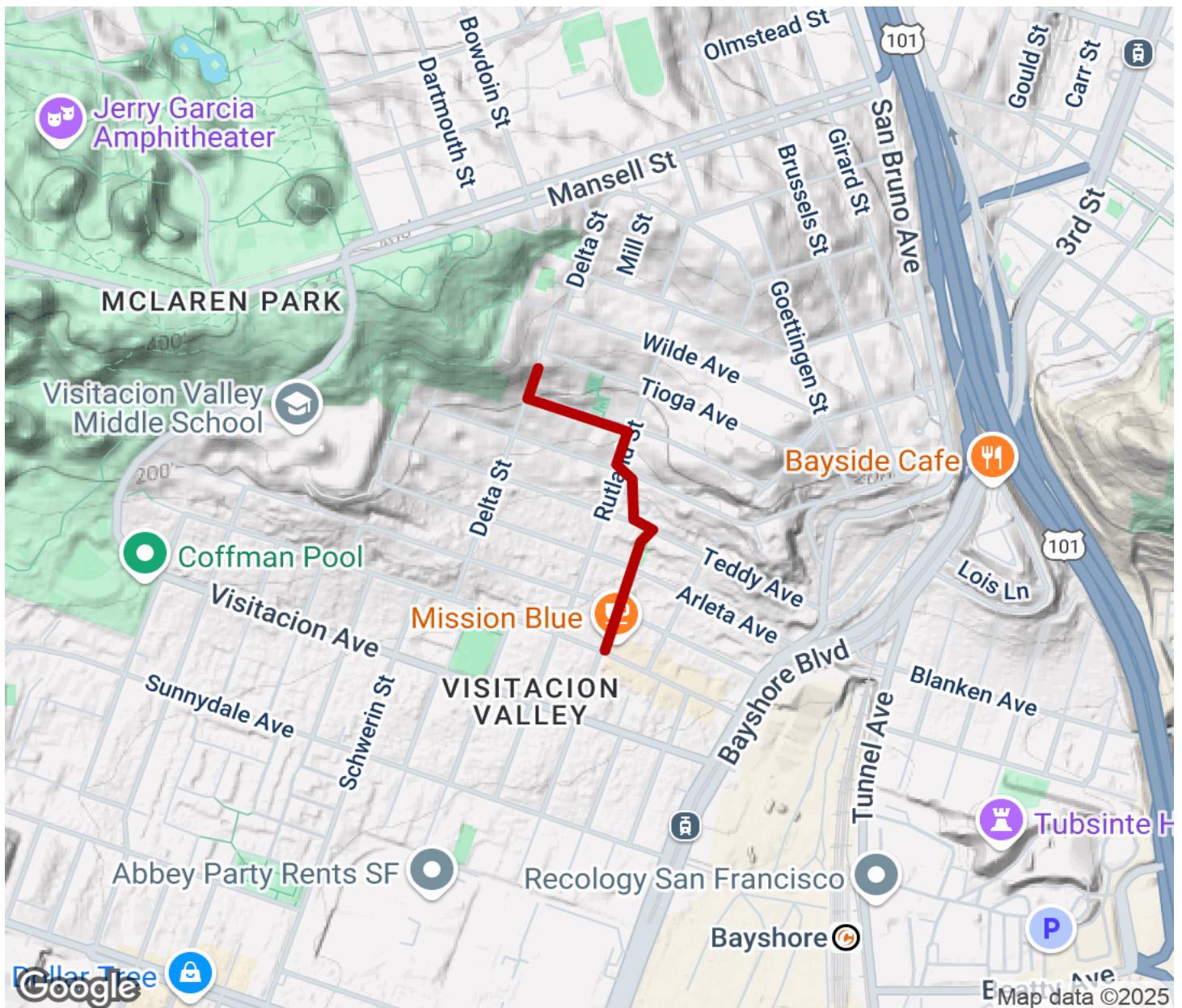
TrailLink
by Rails-to-Trails Conservancy

TrailLink.com



Visitation Valley Greenway

California



Trailhead



Restroom



Parking



Water Fountain



Tunnel



TrailLink
by Rails-to-Trails Conservancy

TrailLink.com