



2025

TrailLink Unlimited 

Guides   



**Turkey Creek
Trail**
Indiana



Turkey Creek Trail

Indiana

Turkey Creek Trail is a short but sweet walk or ride through the beautiful Ivan Gatlin Nature Preserve in the northwestern Indiana



Turkey Creek Trail is a short but sweet walk or ride through the beautiful Ivan Gatlin Nature Preserve in the northwestern Indiana community of Schererville. This wetland area provides the opportunity to see many types of birds and other wildlife, including great blue heron, sand hill cranes and bald eagles.

The trail is paved and just shy of a mile, but, for longer adventures, it has a direct connection on its west end to the [Erie Lackawanna Trail](#), which stretches nearly 18 miles between Hammond and Crown Point.

On the east end of the Turkey Creek Trail is Prairie Estates Park, which has a playground, picnic shelter, and drinking fountain.



TrailLink
by Rails-to-Trails Conservancy

TrailLink.com



Turkey Creek Trail

Indiana

States: Indiana

Counties: Lake

Length: 0.8miles

Trail end points: Erie Lackawanna Trail to 65th Ave. and Falcon Dr.

Trail surfaces: Asphalt

Trail category: Greenway/Non-RT

Trail activities: Bike,Inline

Skating,Wheelchair Accessible,Walking

Parking & Trail Access

Two trailhead parking lots are available along the adjoining Erie Lackawanna Trail. From the juncture of the two trails, you can go north to the trailhead at S. Aborgast Avenue or south to the trailhead at Burr Street.



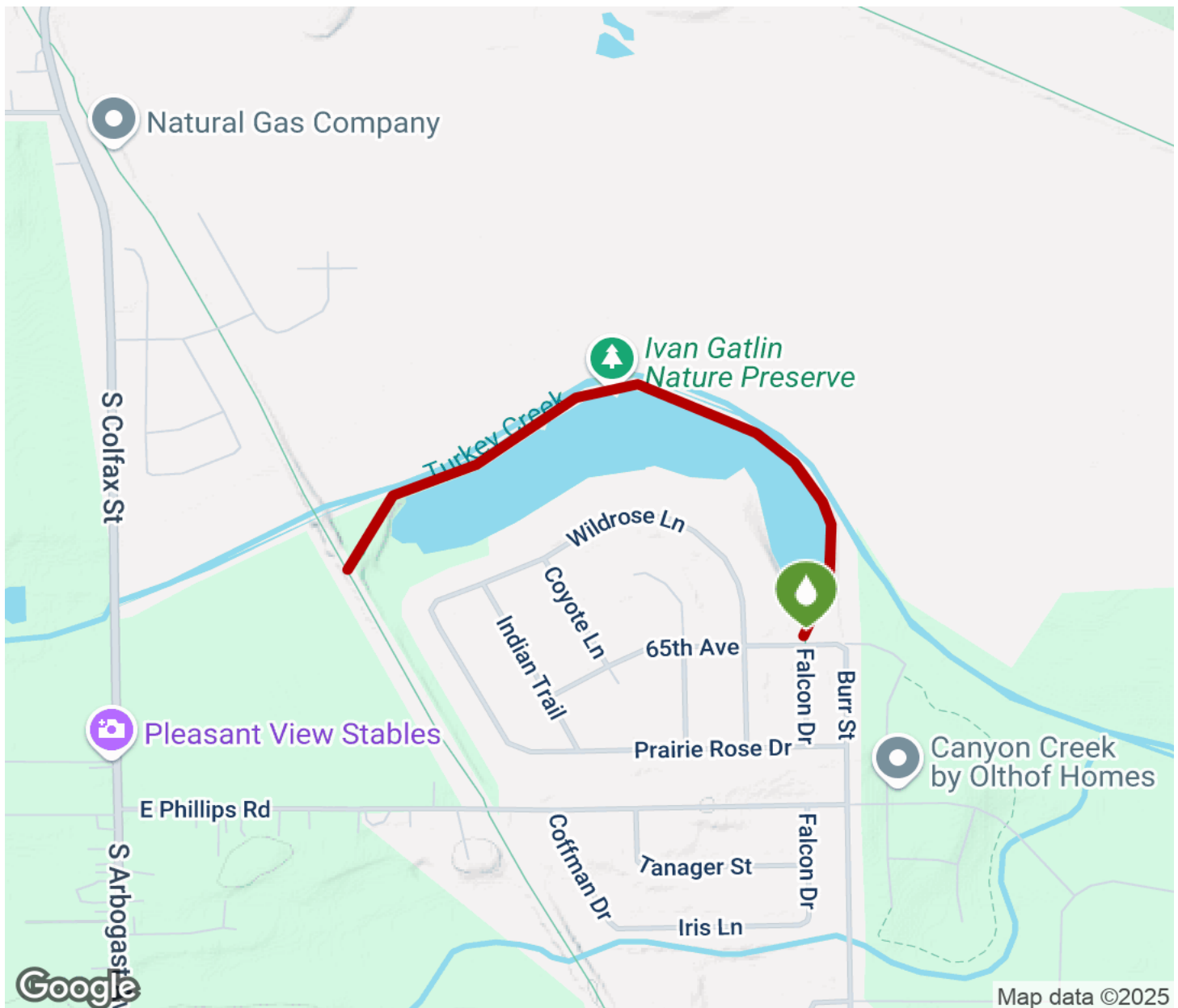
TrailLink
by Rails-to-Trails Conservancy

TrailLink.com



Turkey Creek Trail

Indiana



Trailhead



Restroom



Parking



Water Fountain



Tunnel



TrailLink

by Rails-to-Trails Conservancy

[TrailLink.com](https://www.TrailLink.com)