



2024

TrailLink Unlimited



Guides



# Lyle Hatfield Path

*Oregon*



## Lyle Hatfield Path

Oregon

*The Lyle Hatfield Path, named in honor of one of Springfield's former city council presidents, is a short little hidden gem,*



The Lyle Hatfield Path, named in honor of one of Springfield's former city council presidents, is a short little hidden gem, providing a paved, multi-use pathway along a wooded corridor next to the McKenzie River. The trail is situated behind a massive hospital complex, inviting nearby residents to enjoy some preventative medicine by taking a nice stroll or jog along the trail. The surface is well-maintained, with ample lighting and benches along the way - what the path lacks in length it makes up for in quality, and by providing plenty of pretty views of the nearby river.

Past the hospital, the paved section of trail comes to an end, but trail users can continue their journey along a grass walking and jogging trail to get in some extra mileage and exercise.



# Lyle Hatfield Path

Oregon

**States:** Oregon

**Counties:** Lane

Length: 0.6miles

**Trail end points:** Riverbend Dr. to East of Baldy View Ln.

**Trail surfaces:** Asphalt,Grass

**Trail category:** Greenway/Non-RT

**Trail activities:** Bike,Inline Skating,Walking

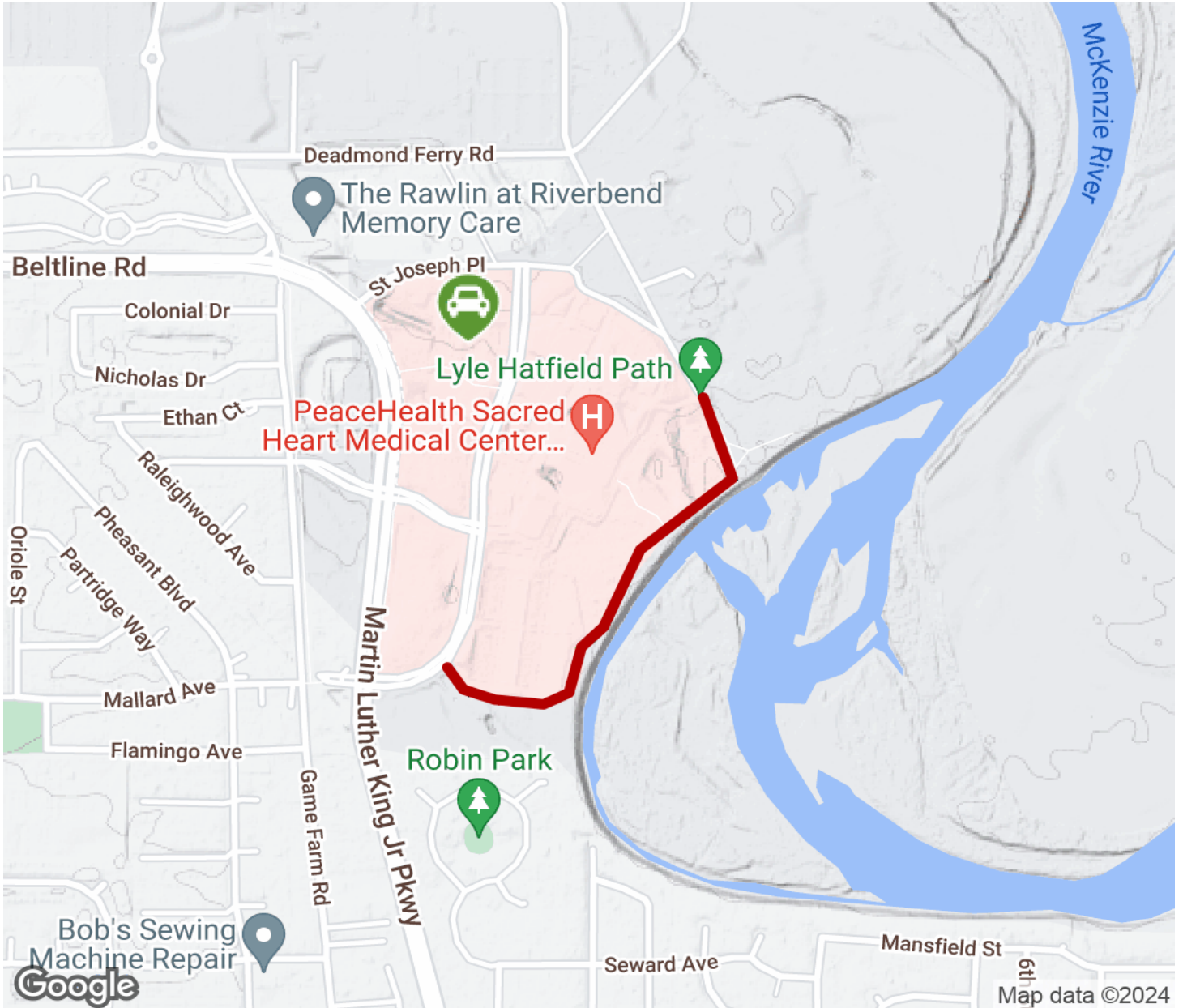
## Parking & Trail Access

Parking is available at the nearby Riverbend Hospital, located at 3333 Riverbend Drive in Springfield; be sure to follow any posted parking signs and regulations.



# Lyle Hatfield Path

Oregon



Trailhead



Restroom



Parking



Water Fountain



Tunnel



**TrailLink**  
by Rails-to-Trails Conservancy

**TrailLink.com**