



2024

TrailLink Unlimited



Guides



**Trolley Trail
(NY)**
New York



Trolley Trail (NY)

New York

Following the route of the former Rochester & Eastern Rapid Railway, the Trolley Trail winds through the town of Victor. Active



Following the route of the former Rochester & Eastern Rapid Railway, the Trolley Trail winds through the town of Victor. Active between 1903 and 1930, the Rochester & Eastern Rapid Railway was an interurban trolley that ran between Rochester and Geneva.

Although it is a rail-trail, the route is best suited for hiking and mountain biking. With several distinct sections, the trail surface alternates between cinder, dirt, grass, sidewalk, asphalt, and boardwalk.

From its northern end at the intersection of Main Street Fishers and NY-96/Pittsford Victor Road to Omnitec Place (between Phillips Rd & NY-96), the route is shared by the Dryer Trail and utilizes the sidewalk running along NY96 before cutting through the Victor Inn's parking lot to

Omnitec Place, where it curves south away from the highway.

From Omnitec Place, the route intersects with the [Lehigh Valley Trail \(North Branch\)](#) and heads into the woods at Lehigh Crossing Park (7350 Victor Mendon Rd) as a 2- to 3-foot wide trail with a dirt and grass surface. Passing through a meadow, the Trolley Trail curves southeast while the Dryer Trail curves southwest.

Continuing through woodlands and fields, the trail connects with the park trails and crosses the East Branch of Irondequoit Creek. Following a stream, the trail heads through the trees to NY-251/Victor Mendon Road. You may catch a glimpse of a beaver or evidence of their recent activity.

Crossing NY-251/Victor Mendon Road and continuing south, the trail parallels the [Auburn Trail \(Pittsford-Farmington\)](#), a multiuse rail-trail with a crushed stone surface. These two rail-trails share a fun bit of rail history. The electric-powered trolley and the steam-powered Auburn Road trains would sometimes have a "race" along this section. There are several connections between the trails, including the Seneca Trail.

There is a gap in the Trolley Trail, but the route makes use of the Seneca Trail and the Auburn Trail, as well as sidewalks. Take the Seneca Trail to briefly follow the Auburn Trail south, and then use sidewalks to head east on Rawson Road and northeast on School Street to rejoin the next off-road section of the Trolley Trail.

From School Street to Maple Street, the trail is 8-foot-wide and paved. Along this multiuse section, the trail crosses the railroad track and the Great Brook.

Paralleling the Great Brook south from Maple Street, the trail is 6- to 8-foot wide with a dirt and grass surface as it curves around Victor Municipal Park (6680 Paparone Dr). The park has a playground, a large picnic shelter, restrooms, outdoor fitness stations, a sand volleyball court, a bocce ball court,



Trolley Trail (NY)

New York

States: New York

Counties: Ontario

Length: 4miles

Trail end points: Main St Fishers & NY-96/
Pittsford Victor Rd to Brace Rd & Auburn Trail
(Victor)

Trail surfaces: Asphalt,Boardwalk,Cinder,
Concrete,Dirt,Grass

Trail category: Rail-Trail

Trail activities: Walking

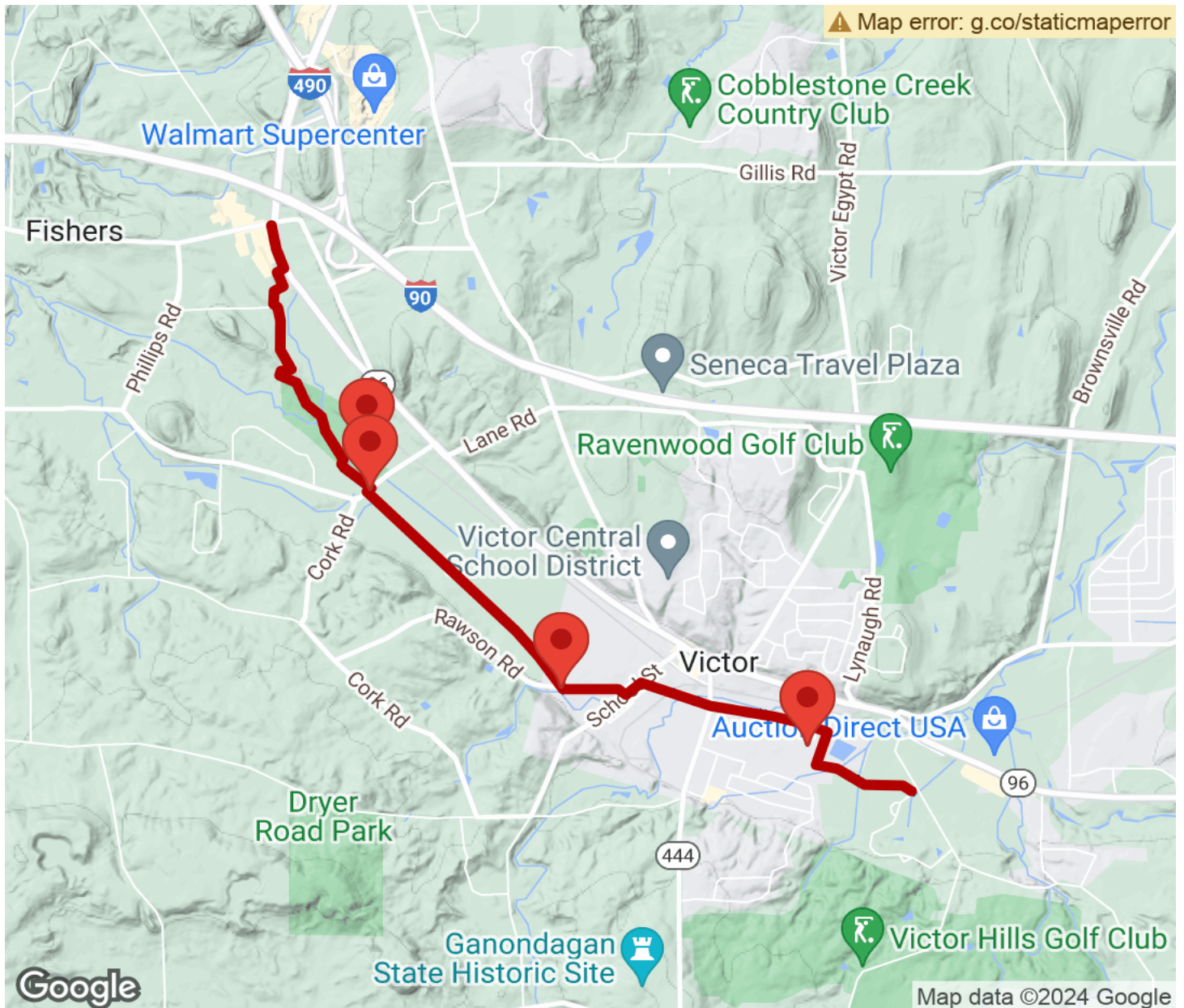
Parking & Trail Access

Parking is available at the Lehigh Valley Trail parking lot (7320 Victor Mendon Rd) south of Lehigh Crossing Park, at two Auburn Trail parking lots (at 7424 NY-251 and at 150 Rawson Rd), and at the Victor Municipal Park (6680 Papparone Dr).



Trolley Trail (NY)

New York



- Trailhead
- Restroom
- Parking
- Water Fountain
- Tunnel