



2024

TrailLink Unlimited 

Guides



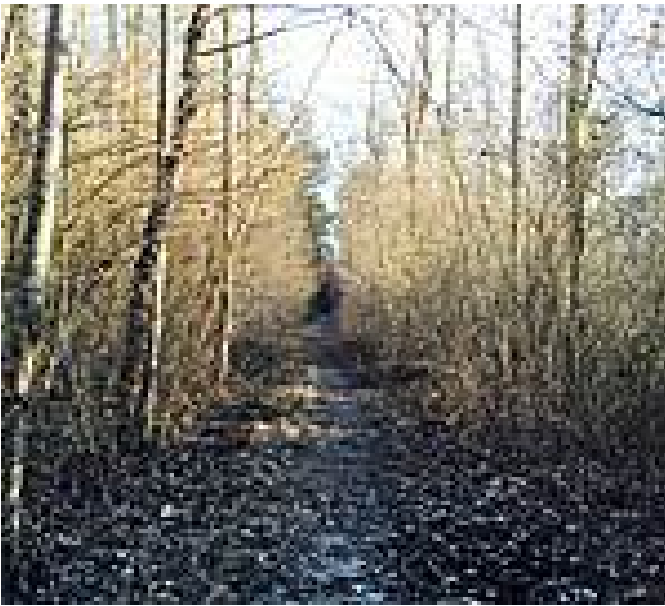
**Eagle Spur
Rail-Trail**
North Carolina



Eagle Spur Rail-Trail

North Carolina

The Eagle Spur Rail-Trail follows 2.2 miles of the former Durham-New Hill Railroad, from Stagecoach Road along New Hope Creek



The Eagle Spur Rail-Trail follows 2.2 miles of the former Durham-New Hill Railroad, from Stagecoach Road along New Hope Creek to Jordan Lake.

When you're done exploring the Eagle Spur, cross over SR 751 and head north a short distance to Massey Chapel Road, where you can jump on the [American Tobacco Trail](#).



Eagle Spur Rail-Trail

North Carolina

States: North Carolina

Counties: Chatham, Durham

Length: 2.3 miles

Trail end points: Stage Coach Road to Jordan Lake

Trail surfaces: Dirt

Trail category: Rail-Trail

Trail activities: Bike, Wheelchair

Accessible, Mountain Biking, Walking, Cross Country Skiing

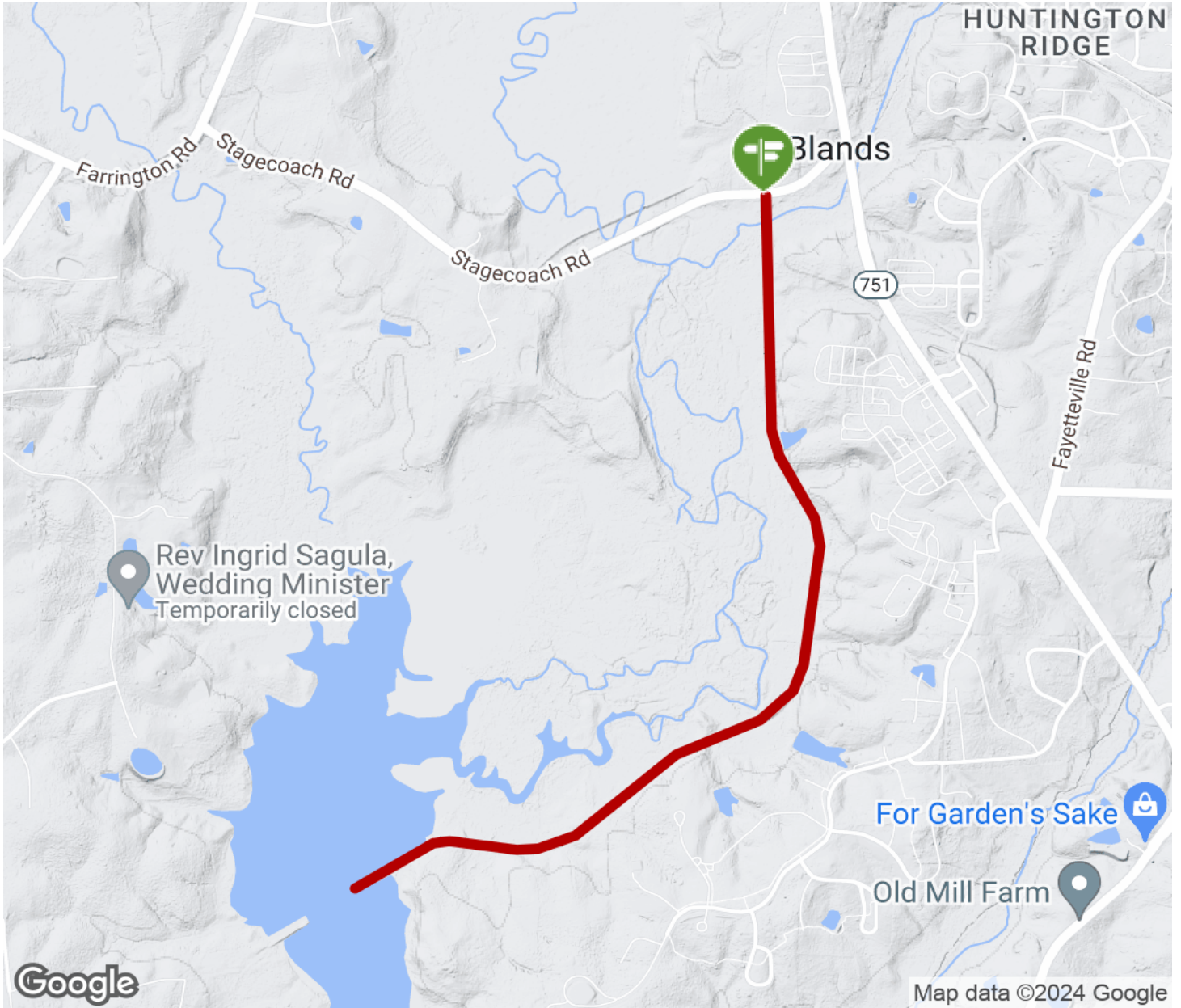
Parking & Trail Access

The trail can be accessed from from Stagecoach Road in Durham.



Eagle Spur Rail-Trail

North Carolina



Trailhead



Restroom



Parking



Water Fountain



Tunnel



TrailLink
by Rails-to-Trails Conservancy

TrailLink.com