



2024

TrailLink Unlimited



Guides



# Tuxachanie National Recreation Trail

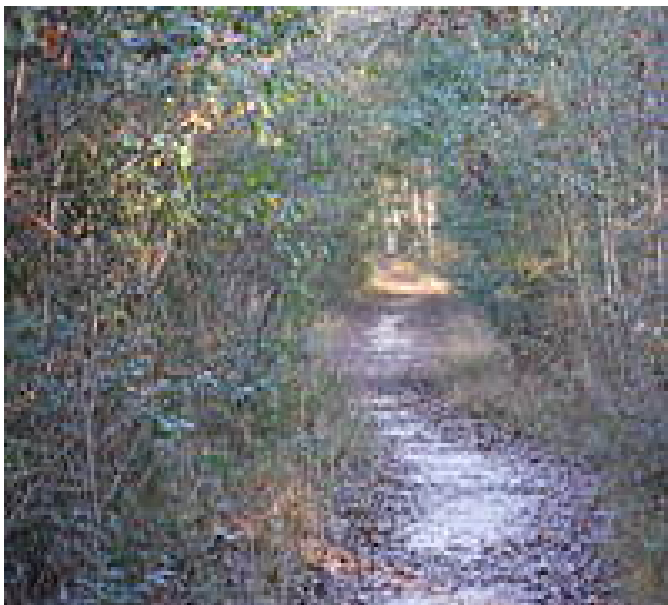
*Mississippi*



## Tuxachanie National Recreation Trail

Mississippi

*The Tuxachanie Trail is a National Recreation Trail offering a 12-mile hike through southern Mississippi's Desoto National Forest. A*



While this trail is designated for foot travel only, there is a short section that is used in conjunction with the Big Foot Horse Trail. No motorized vehicles are allowed. Fishing is permitted mid-trail at the Airey Lake Recreation Area and at the P.O.W. Lake Recreation Area at the trail's eastern end.

On its western end, the first 1/4 mile of trail from US 49 has a hard-packed surface, allowing for wheelchair accessibility; however, there are some roots.

The Tuxachanie Trail is a National Recreation Trail offering a 12-mile hike through southern Mississippi's Desoto National Forest. A portion of the trail follows an old abandoned railroad that once served the sawmill of the Dantzler Lumber Company at Howison. Hikers will encounter a variety of forest vegetation; savannahs and swamps lie between the ridges. Here, pitcher plants and palmettos grow in abundance, as well as the occasional wild orchid. Timbered ridges of longleaf and slash pine add to the scenery.

Overnight primitive camping is permitted, but campsites must be 100 feet away from the trail to preserve its natural character. Drinking water and restrooms are not provided along the trail but can be found at Airey Lake Recreation Area.



# Tuxachanie National Recreation Trail

*Mississippi*

**States:** Mississippi

**Counties:** Harrison, Stone

Length: 12.1 miles

**Trail end points:** Highway 49 north of Saucier (DeSoto National Forest) to P.O.W. Campground on Bethel Road (DeSoto National Forest)

**Trail surfaces:** Dirt

**Trail category:** Rail-Trail

**Trail activities:** Fishing, Walking

## Parking & Trail Access

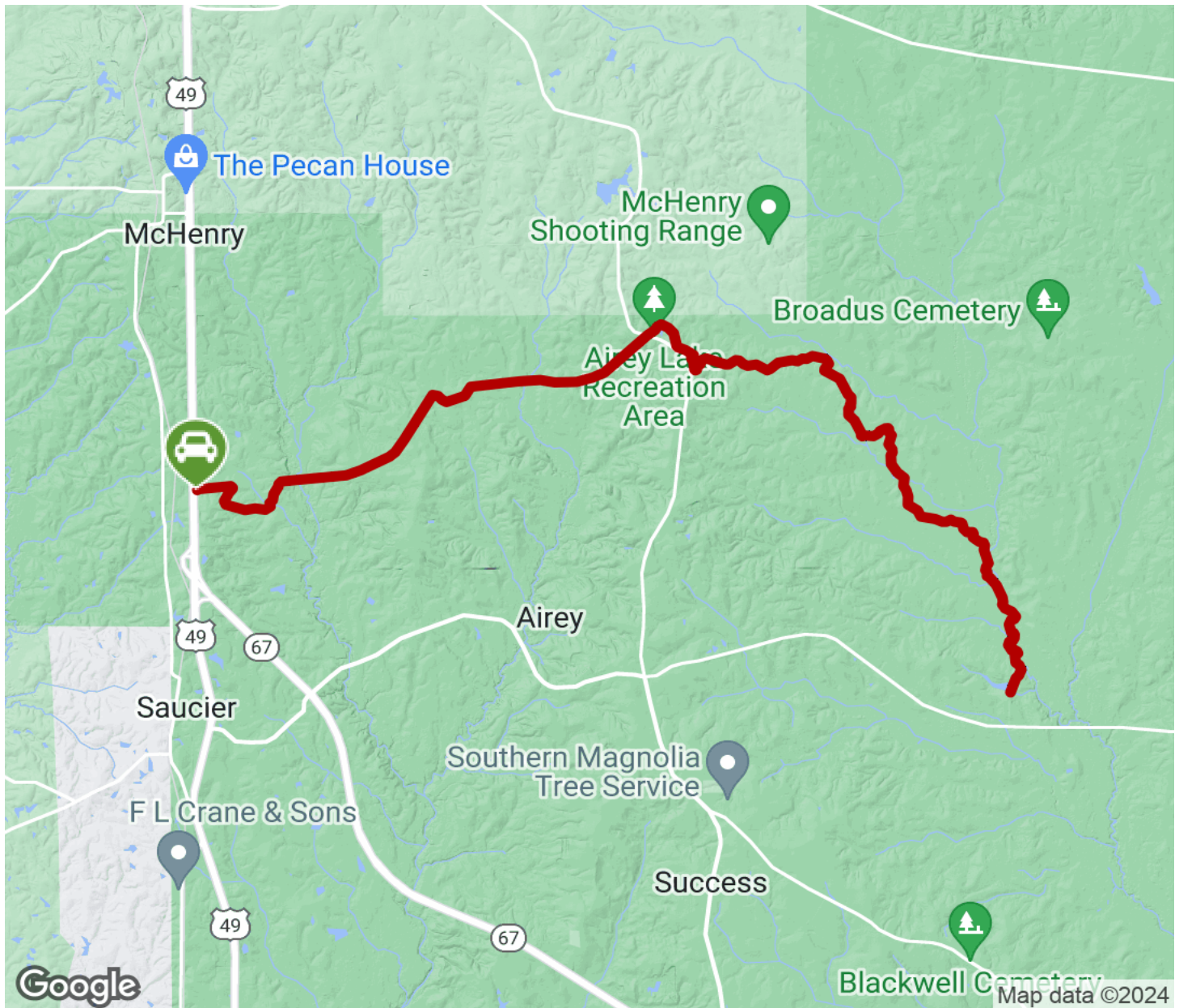
The trail can be accessed from three different trailheads, where parking is available: on the trail's western end off US 49 north of Saucier (look for the rows of live oaks), mid-trail at the Airey Lake Recreation Area (off County Road 412/Airey Tower Road), and at the P.O.W. Lake Recreation Area at the eastern terminus of the trail.

From Wiggins: Travel south on US 49. The primary trailhead is located 2.5 miles north of Saucier, on the east side of US 49.



# Tuxachanie National Recreation Trail

Mississippi



Trailhead



Restroom



Parking



Water Fountain



Tunnel



**TrailLink**  
by Rails-to-Trails Conservancy

**TrailLink.com**