



2024

TrailLink Unlimited



Guides



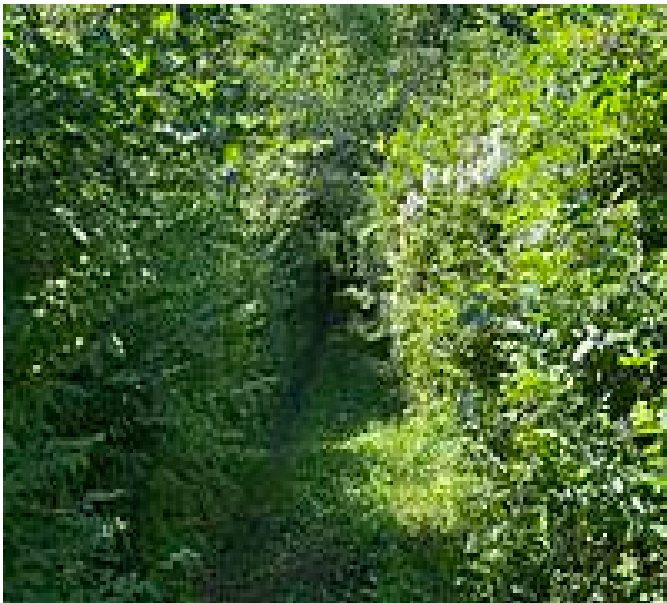
**Ridgeway
Trail**
New York



Ridgeway Trail

New York

The Ridgeway Trail skirts the banks of Willseyville Creek along the abandoned rail bed of the Delaware & Lackawanna Railroad and



The Ridgeway Trail skirts the banks of Willseyville Creek along the abandoned rail bed of the Delaware & Lackawanna Railroad and the former Lehigh Valley Railroad. From south Willseyville the trail heads north into Tomkins County and ends at Ridgeway Road. The level trail is used by mountain bikers and hikers, and snowmobiles are permitted in winter. Follow the white blazes since many side trails cross the Ridgeway Trail.



Ridgeway Trail

New York

States: New York

Counties: Tioga, Tomkins

Length: 4.3 miles

Trail end points: Ithaca Road/Rt. 96B
(Willseyville) to Ridgeway Road

Trail surfaces: Ballast, Dirt, Gravel

Trail category: Rail-Trail

Trail activities: Mountain

Biking, Snowmobiling, Walking, Cross Country
Skiing

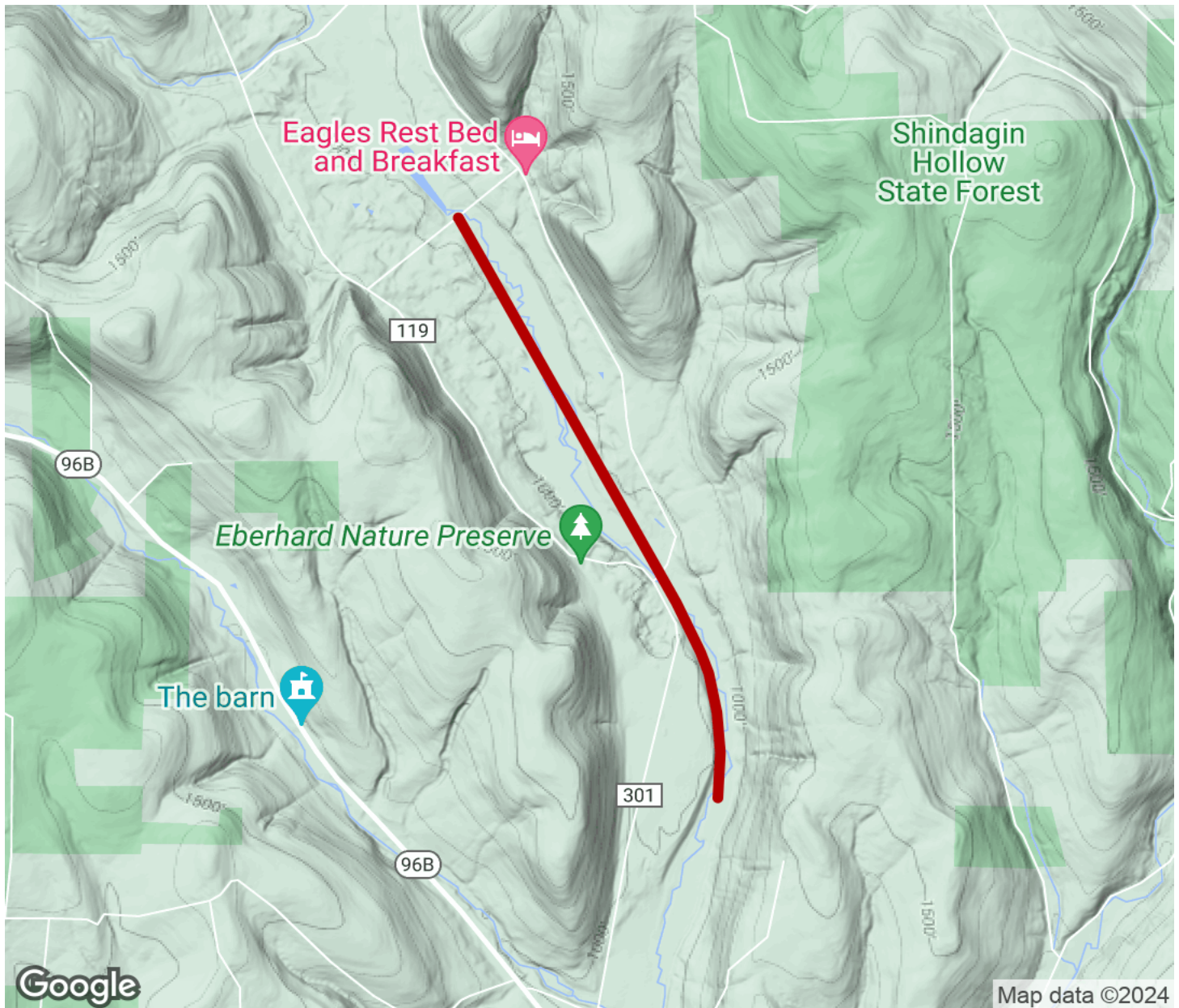
Parking & Trail Access

There's parking just off the Ridgeway Road end. Look for the Finger Lakes Trail sign where the power line crosses the road (near Coddington Road). You can also park at the southern terminus in Willseyville.



Ridgeway Trail

New York



Trailhead



Restroom



Parking



Water Fountain



Tunnel



TrailLink
by Rails-to-Trails Conservancy

TrailLink.com