



2024

TrailLink Unlimited 

Guides



**Phenix-Harris  
Riverwalk**  
*Rhode Island*



## Phenix-Harris Riverwalk

*Rhode Island*

*The Phenix-Harris Riverwalk, a short trail built on a former rail bed purchased from Penn Central Railroad, connects West*



The Phenix-Harris Riverwalk, a short trail built on a former rail bed purchased from Penn Central Railroad, connects West Warwick and Coventry, two towns on the outskirts of Providence. The dirt pathway offers a peaceful and wooded oasis between the Pawtuxet River and residential neighborhoods. Future plans include a connection to the [Arkwright Riverwalk](#), just over a mile away.



# Phenix-Harris Riverwalk

*Rhode Island*

**States:** Rhode Island

**Counties:** Kent

Length: 0.3miles

**Trail end points:** Fairview Ave., West Warwick  
to Lincoln Ave., Coventry

**Trail surfaces:** Dirt

**Trail category:** Rail-Trail

**Trail activities:** Bike, Fishing, Wheelchair

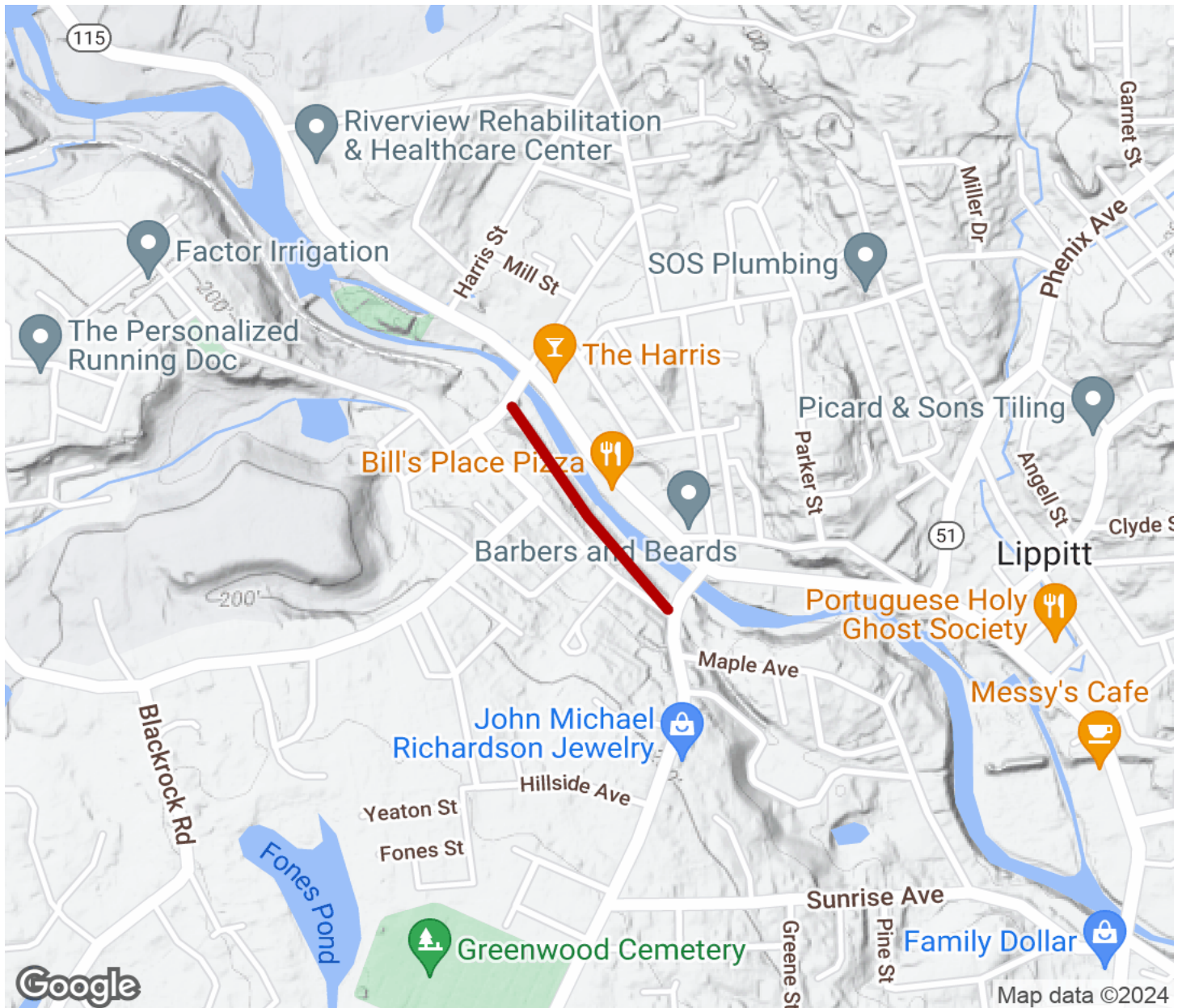
Accessible, Mountain Biking, Walking, Cross  
Country Skiing

## Parking & Trail Access



# Phenix-Harris Riverwalk

Rhode Island



Trailhead



Restroom



Parking



Water Fountain



Tunnel



**TrailLink**  
by Rails-to-Trails Conservancy

**TrailLink.com**