



2024

TrailLink Unlimited 

Guides



**Wolftever  
Creek  
Greenway**  
*Tennessee*



## Wolftever Creek Greenway

Tennessee

*The Wolftever Creek Greenway is a sparkling gem in the city of Collegedale. Construction began in 1998, and as of 2011, more than*



do a bit a trainspotting from the train-shaped bench. At Veterans Park there's an outdoor movie theater, and during the season they park hosts the Arts in the Park Festival and East Hamilton Symphony and Orchestra performances.

Begin your explorations of the delightful Wolftever Creek Greenway at the Imagination Station Playground behind City Hall. From here the trail goes underneath Apison Pike, intersects Wolftever Creek and continues to the pond on Ooltewah-Ringgold Road. From here you cross a bridge over the road then turn east on the other side of Wolftever Creek to Spalding Drive. From Spalding Drive, cross Tucker Road to the Nature Nook, located at Tallant Road and Apison Pike.

For now, the trail ends on Southern Adventist University property near Tallant Road. Future plans to extend the trail will include a Robinson Farm connection, which will travel along the railroad, and another segment that will run from Apison Pike to Landrem subdivision.

The Wolftever Creek Greenway is a sparkling gem in the city of Collegedale. Construction began in 1998, and as of 2011, more than 4 miles of greenway, part of which is along a railroad right-of-way, have been built.

The greenway offers a lot of interesting features for trail users, including the Imagination Station Playground, a Nature Nook, a dog park and picnic tables. In addition, you'll find fountains in ponds, artistically shaped benches (a butterfly and train), old wagon wheels, bicycles and plows made into planters and plenty of birdfeeders. At the old mill site there is a remodeled wagon.

In a nod to the days when men used to sit by the old train tracks and whittle, the city now provides a whittling bench. If whittling doesn't take your fancy, you can always



# Wolftever Creek Greenway

Tennessee

**States:** Tennessee

**Counties:** Hamilton

Length: 2.9miles

**Trail end points:** Leyland Dr. nr. Oottewah  
Ringgold Rd. to Tallant Rd. nr. SA University

**Trail surfaces:** Concrete

**Trail category:** Rail-Trail

**Trail activities:** Bike, Inline  
Skating, Wheelchair Accessible, Walking

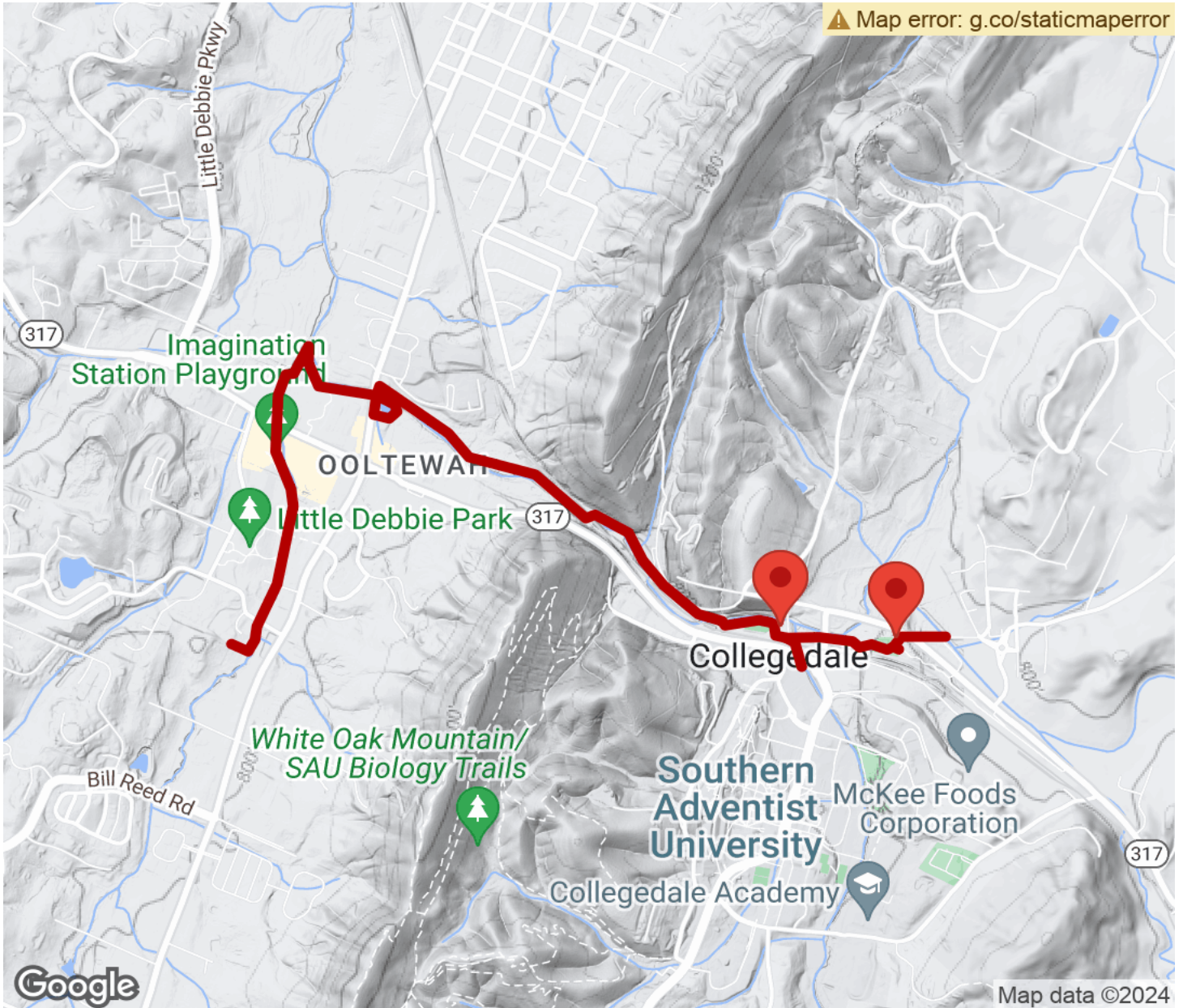
## Parking & Trail Access

In Collegedale, parking is available at The Nature Nook (at the intersection of Tallant Road and Apison Pike) and at the Tucker Road Recreational Area (at the intersection of Tucker Road and Apison Pike).



# Wolftever Creek Greenway

Tennessee



Trailhead



Restroom



Parking



Water Fountain



Tunnel



**TrailLink**  
by Rails-to-Trails Conservancy

**TrailLink.com**