



2024

TrailLink Unlimited 

Guides



D & H Canal Park

New York



D & H Canal Park

New York

The D & H Canal towpath is nestled within the 300-acre D & H Canal Park in the New York hamlet of Cuddebackville. The crushed-stone



The D & H Canal towpath is nestled within the 300-acre D & H Canal Park in the New York hamlet of Cuddebackville. The crushed-stone trail, stretching just over a half mile, is one section of a larger trail system winding along the historical Delaware and Hudson (D & H) Canal, which dates back to the early 1800s.

Walking and biking can be enjoyed in this beautiful natural setting, as well as fishing in the Neversink River. The D & H Canal Park Visitor Center is a good place to start your journey to learn more about the canal; you can also picnic on its grounds. The Neversink Valley Area Museum (located adjacent to the park entrance) is another must-visit attraction for history buffs.



D & H Canal Park

New York

States: New York

Counties: Orange

Length: 0.6 miles

Trail end points: Hoag Road to Route 7 near
Berman Road

Trail surfaces: Crushed Stone

Trail category: Canal

Trail activities: Bike, Fishing, Wheelchair
Accessible, Walking, Cross Country Skiing

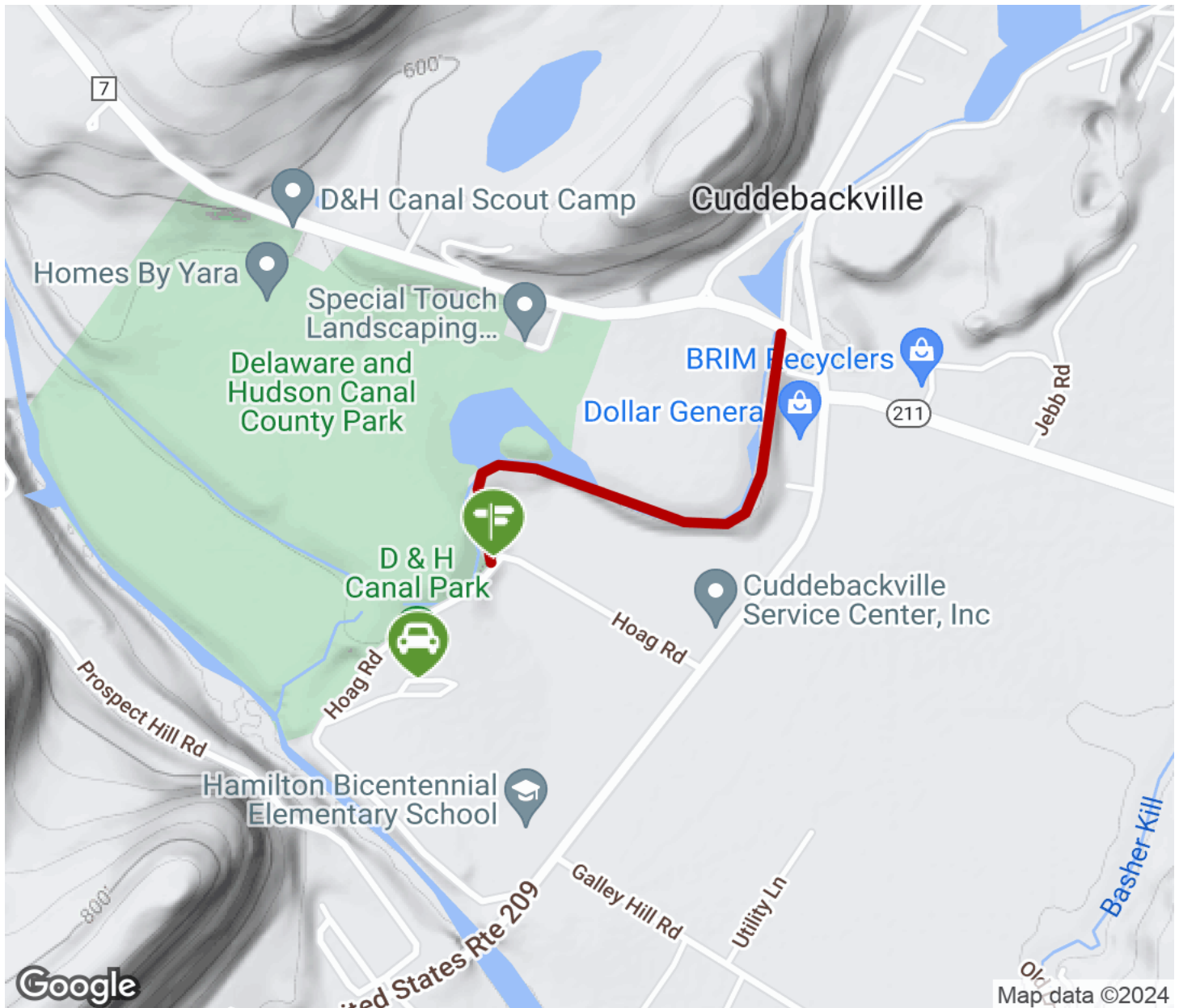
Parking & Trail Access

The trail is located within D & H Canal Park (58 Hoag Road, Cuddebackville), where parking and restrooms are available at the visitor center.



D & H Canal Park

New York



Trailhead



Restroom



Parking



Water Fountain



Tunnel



TrailLink
by Rails-to-Trails Conservancy

TrailLink.com