



2024

TrailLink Unlimited



Guides



## Whistle Punk Interpretive Trail

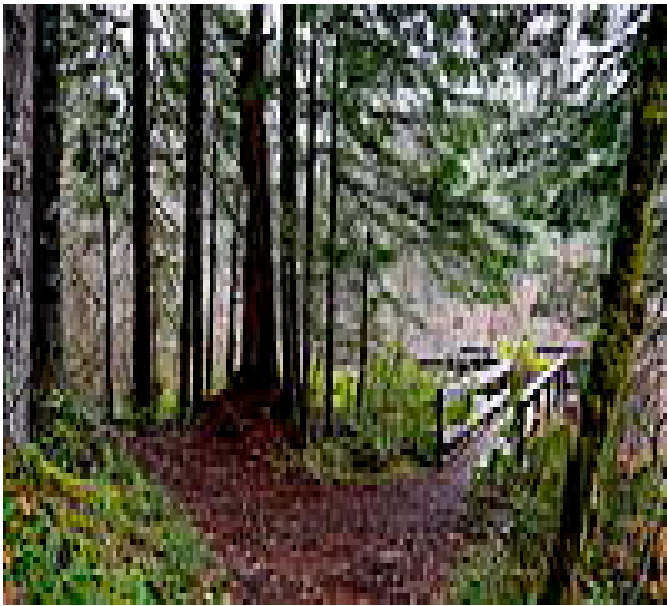
*Washington*



## Whistle Punk Interpretive Trail

Washington

[,a href="http://www.fs.fed.us/gpnf/recreation/trails/locations/mta-0059-whistle-punk.shtml"](http://www.fs.fed.us/gpnf/recreation/trails/locations/mta-0059-whistle-punk.shtml)>US Forest Service: This trail is a



here..

A NW Forest Pass is Required.

[,a href="http://www.fs.fed.us/gpnf/recreation/trails/locations/mta-0059-whistle-punk.shtml"](http://www.fs.fed.us/gpnf/recreation/trails/locations/mta-0059-whistle-punk.shtml)>US Forest Service:

This trail is a barrier-free interpretive trail that tells the story of forest management from a historical perspective. Signs and a brochure guide visitors along the trail, which runs along an old railroad grade (dating back to 1913) and past features associated with railroad logging by the Wind River Logging Company. The trail also goes past a wetland area and into an old-growth forest. The final leg of the trail takes visitors through an old Wind River Nursery field. Enjoy the lush scenery, waterfalls, wildflowers and spectacular views encountered on the trails within the Gorge and the Gifford Pinchot National Forest featured



# Whistle Punk Interpretive Trail

Washington

**States:** Washington

**Counties:** Skamania

Length: 1.5miles

**Trail end points:** Forest Road 417 to Gifford

Pinchot National Forest

**Trail surfaces:** Gravel

**Trail category:** Rail-Trail

**Trail activities:** Wheelchair

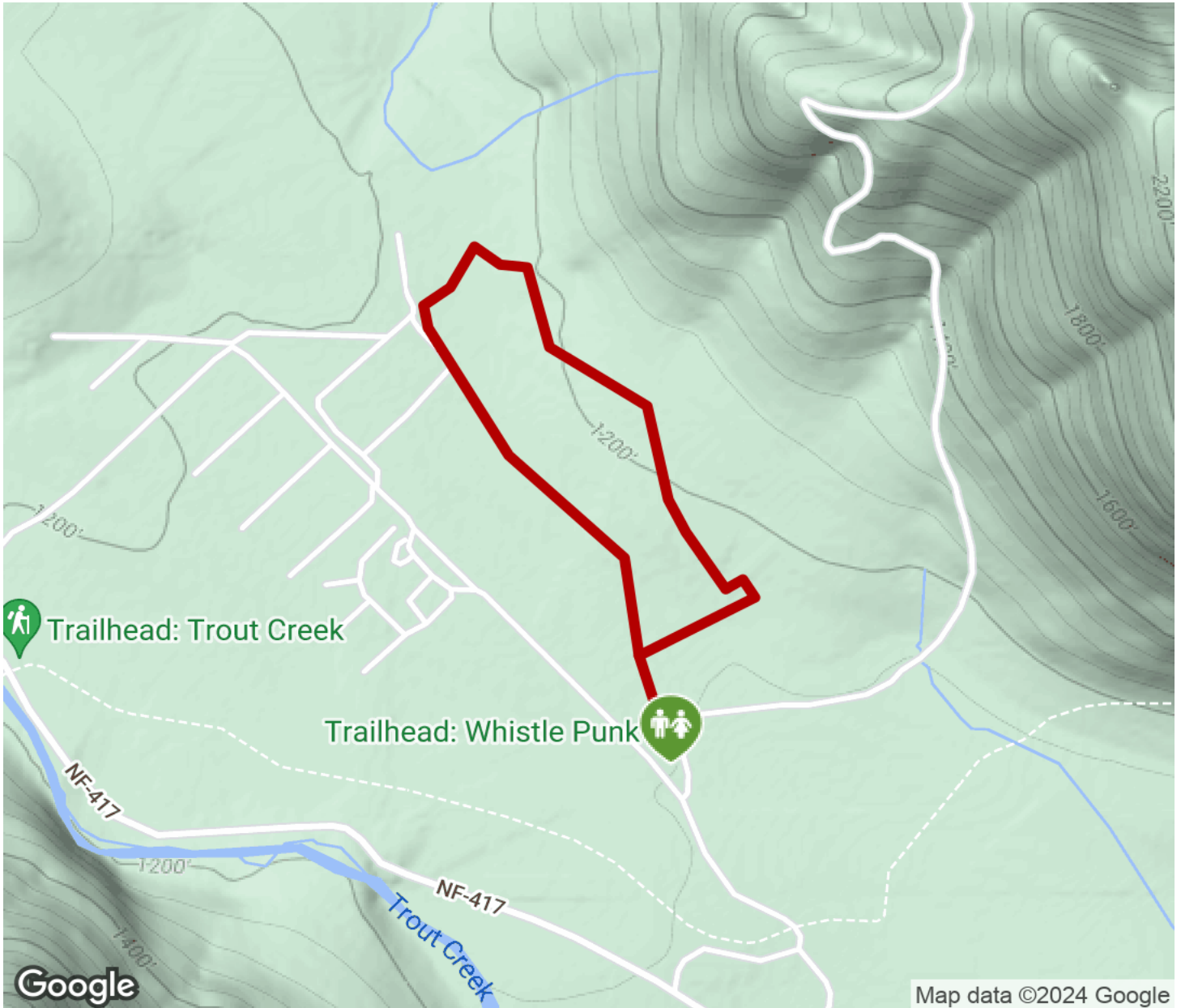
Accessible, Walking

## Parking & Trail Access



# Whistle Punk Interpretive Trail

Washington



Trailhead



Restroom



Parking



Water Fountain



Tunnel



**TrailLink**  
by Rails-to-Trails Conservancy

**TrailLink.com**