



2024

TrailLink Unlimited 

Guides



Mill Creek Greenway (TN)

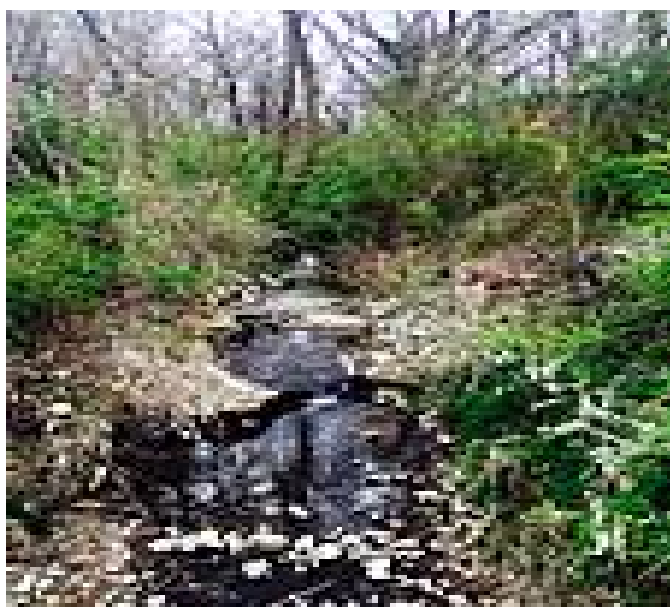
Tennessee



Mill Creek Greenway (TN)

Tennessee

Mill Creek Greenway is one of many forming Nashville's system of greenways throughout the city. Nashville's greenways link



Mill Creek Greenway is one of many forming Nashville's system of greenways throughout the city. Nashville's greenways link neighborhoods, schools, shopping areas, the downtown area, offices, recreation areas, open spaces and other points of interest.

The Mill Creek Greenway consists of two non-contiguous segments, known locally as Blue Hole Road and Ezell Park. The Blue Hole Road section loops 1.8 miles around Antioch Park through a wooded area, beginning at the Antioch Community Center. The Ezell Park section (1.25 miles) begins in the park and follows the creek, crosses SR 255/Harding Place and ends along McGavock Pike.



TrailLink
by Rails-to-Trails Conservancy

TrailLink.com



Mill Creek Greenway (TN)

Tennessee

States: Tennessee

Counties: Davidson

Length: 3miles

Trail end points: Antioch Park to Ezell Road
Park

Trail surfaces: Asphalt

Trail category: Greenway/Non-RT

Trail activities: Bike,Inline

Skating,Wheelchair Accessible,Walking

Parking & Trail Access

You can access the greenway at the following places:

Blue Hole Road section, Antioch Community Center, 5023
Blue Hole Road

Ezell Park section, Ezell Park, 5135 Harding Place.

For more information, contact:

Nashville Parks & Recreation

511 Oman Street

Nashville, Tennessee 37203

615-862-8400

www.nashville.gov/parks/about/contactus.asp



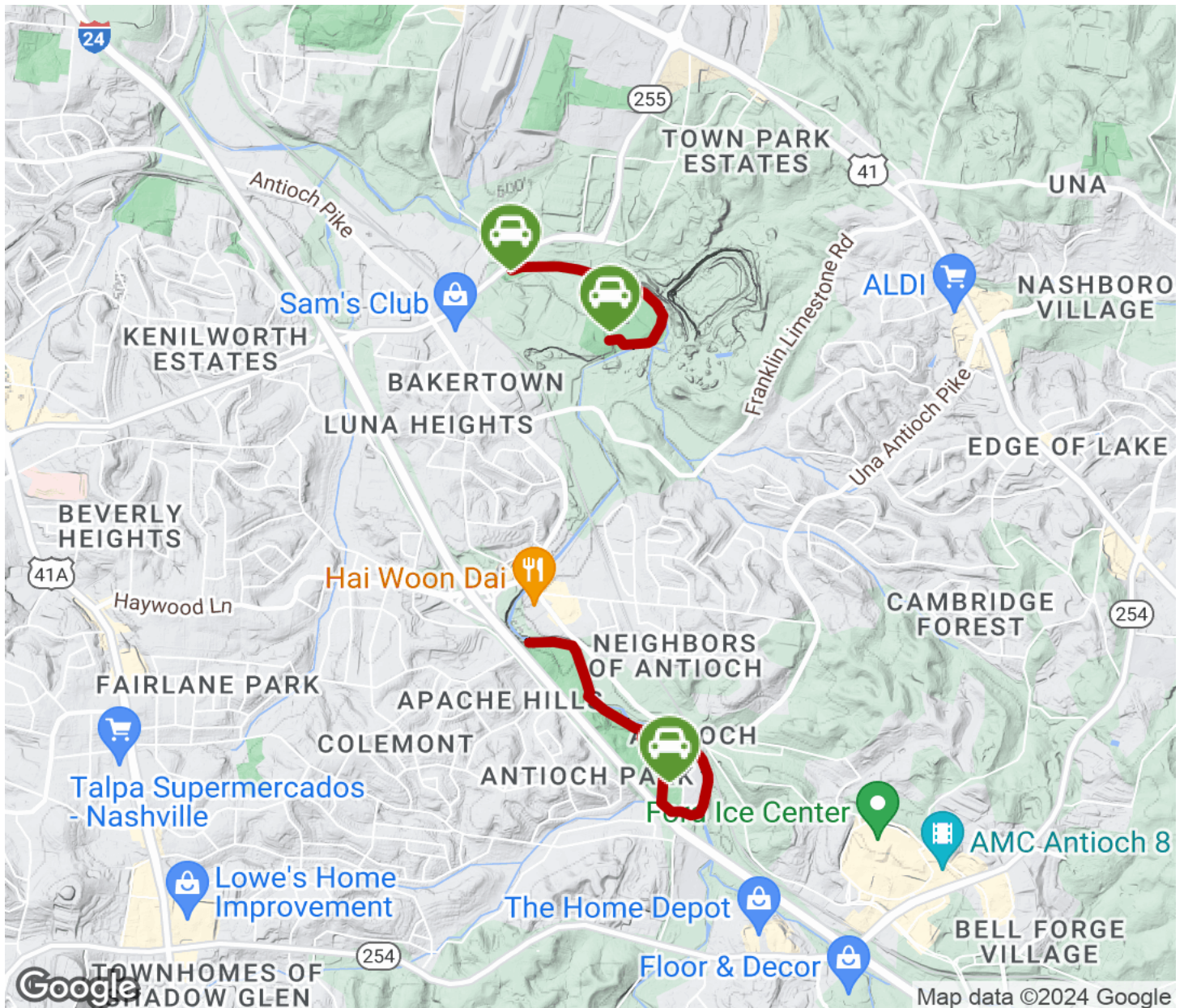
TrailLink
by Rails-to-Trails Conservancy

TrailLink.com



Mill Creek Greenway (TN)

Tennessee



Trailhead



Restroom



Parking



Water Fountain



Tunnel



TrailLink
by Rails-to-Trails Conservancy

TrailLink.com