



2024

TrailLink Unlimited 

Guides



**Mesa Valley  
Trail**  
*Colorado*



## Mesa Valley Trail

Colorado

*Situated in the northwestern corner of Colorado Springs, the Mesa Valley Trail travels through largely open areas to Sondermann*



Situated in the northwestern corner of Colorado Springs, the Mesa Valley Trail travels through largely open areas to Sondermann Park. In the park, you will travel through woodlands along Mesa Creek. You may see beavers, deer, coyotes, raccoons and hawks. A highlight of the trail is its great view of Pikes Peak. However, trail-goers should note that the trail's surface is dirt and gravel, making it best-suited for mountain biking, horseback riding or hiking.



# Mesa Valley Trail

Colorado

**States:** Colorado

**Counties:** El Paso

Length: 1.7miles

**Trail end points:** Palmer-Mesa Trail at Mesa Rd. to Buena Ventura St.

**Trail surfaces:** Dirt,Gravel

**Trail category:** Greenway/Non-RT

**Trail activities:** Horseback Riding,Mountain Biking,Walking

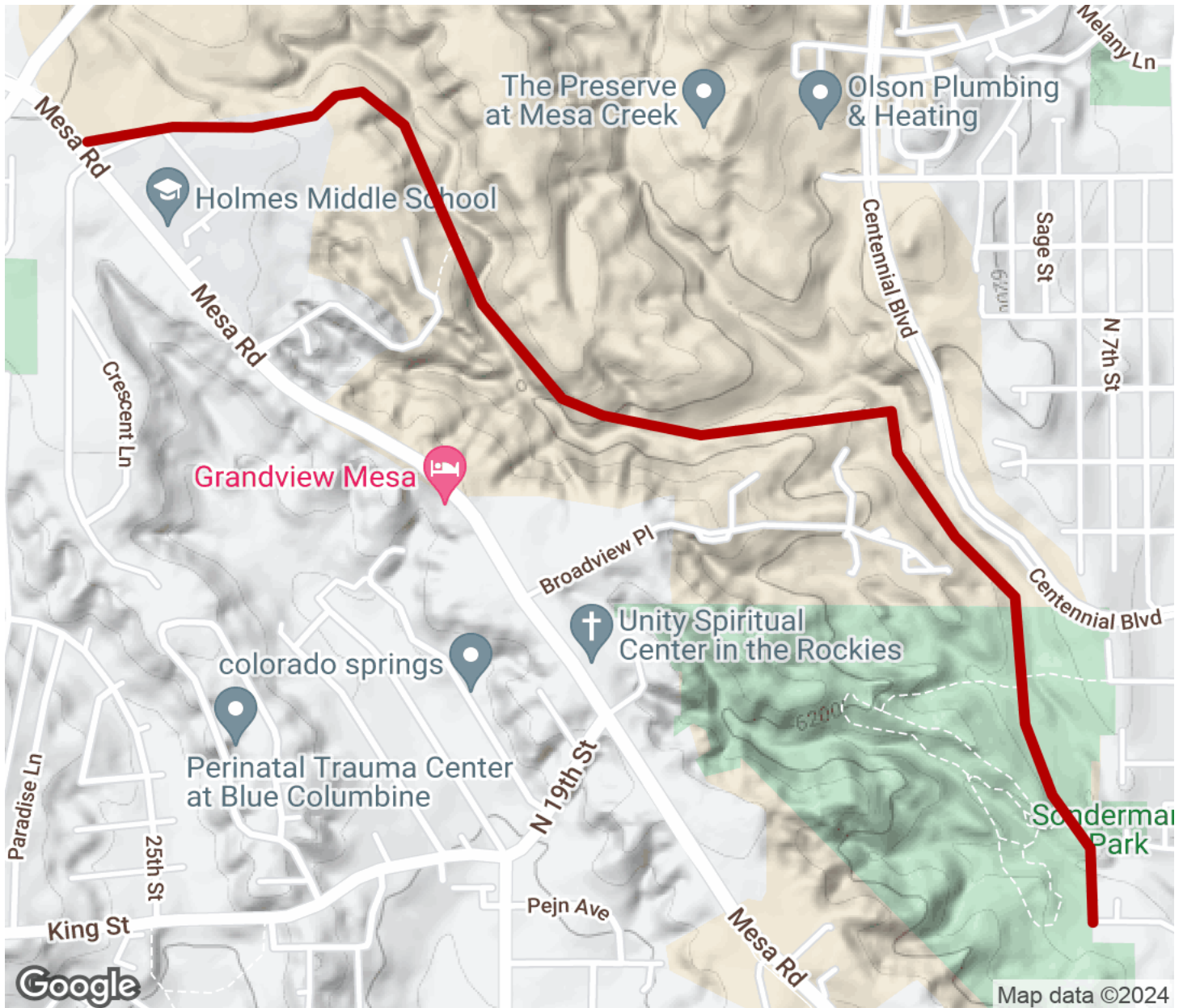
## Parking & Trail Access

A parking lot is available near the southern end of the trail at the Beidleman Environmental Center (740 W. Caramillo Street) in Sondermann Park. Behind the building, follow signs to a short pathway that will take you over a bridge to the Mesa Valley Trail.



# Mesa Valley Trail

Colorado



Trailhead



Restroom



Parking



Water Fountain



Tunnel



**TrailLink**  
by Rails-to-Trails Conservancy

**TrailLink.com**