



2024

TrailLink Unlimited 

Guides



West Campus Trail

Washington



West Campus Trail

Washington

The West Campus Trail provides access from the BPA Trail to Federal Way's West Campus medical centers. The short trail also



The West Campus Trail provides access from the [BPA Trail](#) to Federal Way's West Campus medical centers. The short trail also offers the many surrounding neighborhoods a safe off-street connection to the highlights along the BPA Trail, including Celebration Park (soccer fields, baseball diamonds, general recreation) and the Weyerhaeuser King County Aquatic Center.



West Campus Trail

Washington

States: Washington

Counties: King

Length: 1.04miles

Trail end points: SW 320th St. just west of 1st Ave. S to BPA Trail north of Weyerhaeuser King County Aquatic Center

Trail surfaces: Asphalt

Trail category: Greenway/Non-RT

Trail activities: Bike,Inline Skating,Wheelchair Accessible,Walking

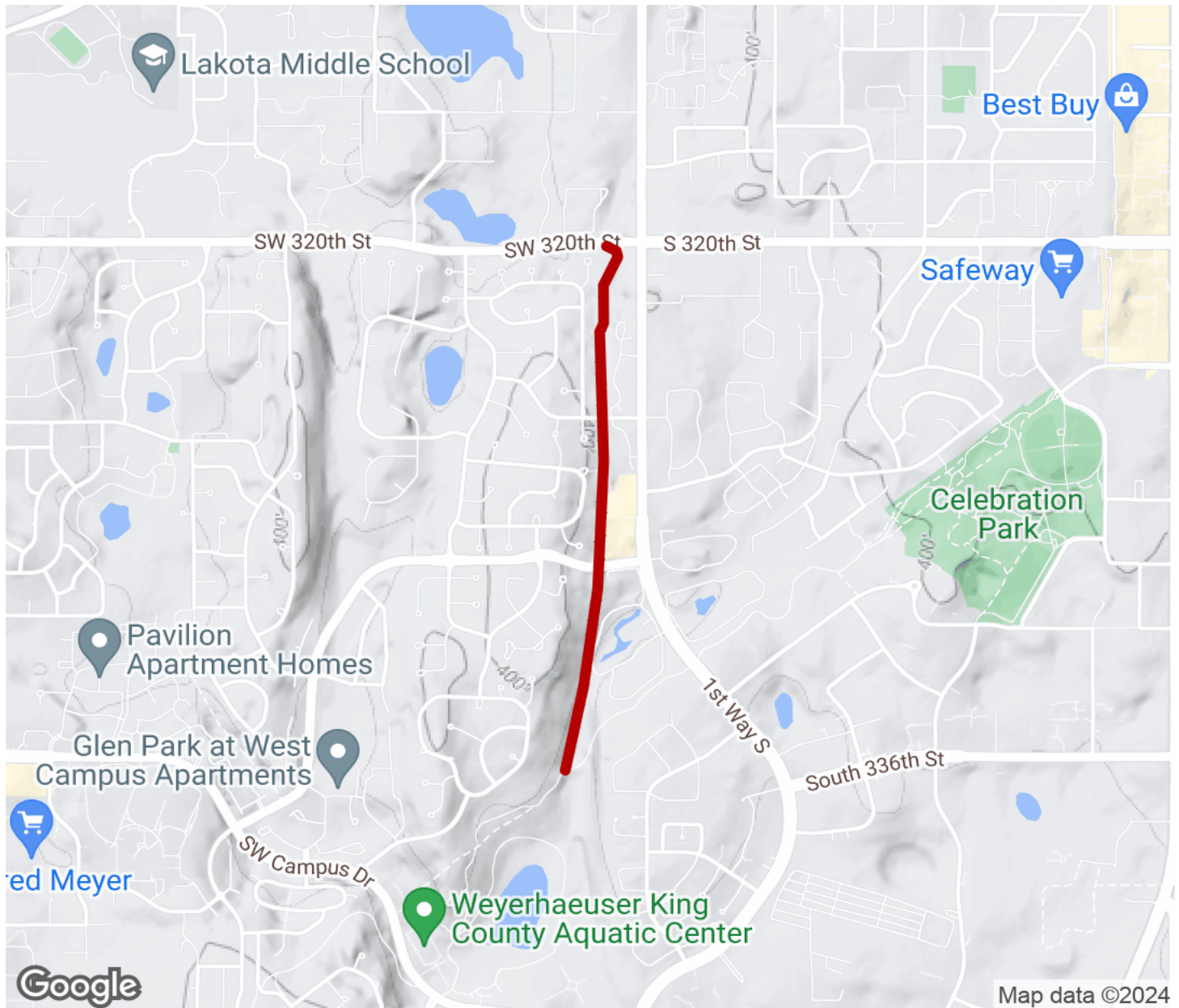
Parking & Trail Access

Access the West Campus Trail from the BPA Trail west of its intersection with 1st Way S. Alternatively, pick up the trail at SW 330th Street, SW 325th Place or SW 320th Street.



West Campus Trail

Washington



Trailhead



Restroom



Parking



Water Fountain



Tunnel



TrailLink
by Rails-to-Trails Conservancy

TrailLink.com