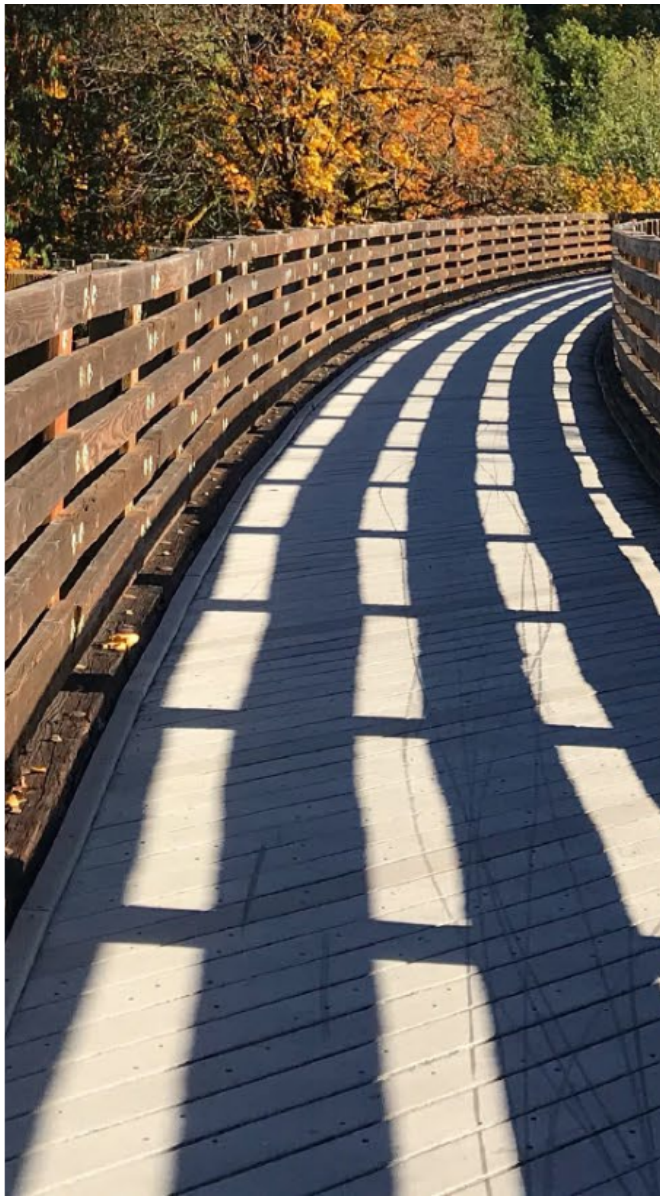




2024

TrailLink Unlimited 

Guides



**Truman Park/  
St. Stanislaus  
Trail -  
Missouri  
River  
Greenway**  
*Missouri*



# Truman Park/St. Stanislaus Trail - Missouri River Greenway

Missouri

*This short, but beautiful trail, takes travelers from Truman Park's lake north to Aubuchon Creek through a lush wooded area. The*



This short, but beautiful trail, takes travelers from Truman Park's lake north to Aubuchon Creek through a lush wooded area. The park offers places to fish, play sports and picnic.

Future plans include continuing the trail's northward course to the St. Stanislaus Conservation Area on the Missouri River.



# Truman Park/St. Stanislaus Trail - Missouri River Greenway

*Missouri*

**States:** Missouri

**Counties:** St. Louis

Length: 0.6miles

**Trail end points:** Truman Park to Aubuchon  
Creek

**Trail surfaces:** Asphalt

**Trail category:** Greenway/Non-RT

**Trail activities:** Bike, Inline  
Skating, Wheelchair Accessible, Walking

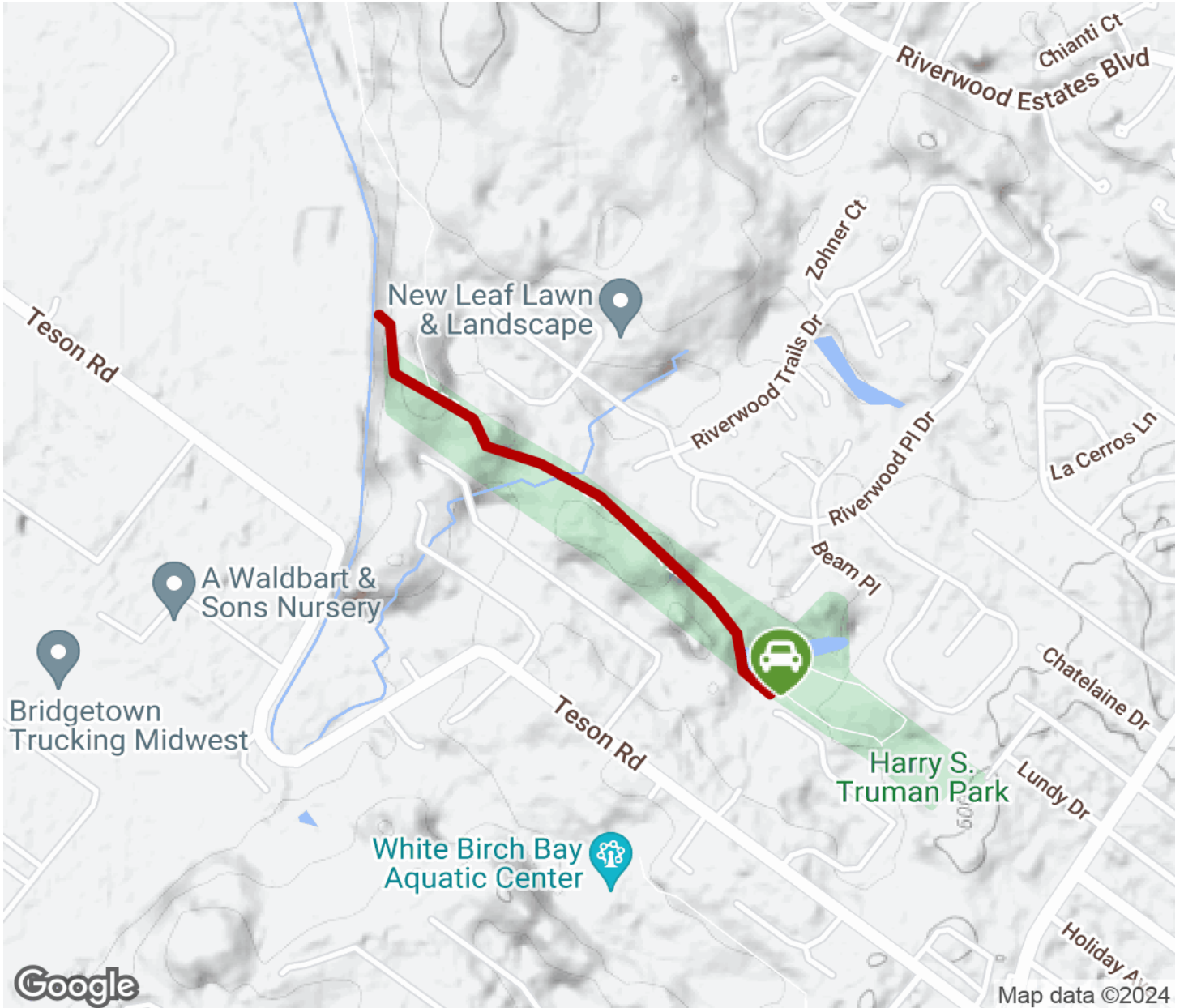
## Parking & Trail Access

A parking lot is available at the southern end of the trail in Truman Park (7029 Howdershell Road, Hazelwood).



# Truman Park/St. Stanislaus Trail - Missouri River Greenway

Missouri



Trailhead



Restroom



Parking



Water Fountain



Tunnel



**TrailLink**  
by Rails-to-Trails Conservancy

**TrailLink.com**