



2024

TrailLink Unlimited 

Guides



## Main Street Bike Path

*Illinois*



## Main Street Bike Path

Illinois

*In the Village of Roscoe, a paved path of just over a mile parallels Main Street (which becomes Frontage Road) and then continues*



In the Village of Roscoe, a paved path of just over a mile parallels Main Street (which becomes Frontage Road) and then continues along the south side of McDonald Road, a quiet residential street. Near the intersection of the two streets, the trail offers access to the community's YMCA (9901 Main Street). As the trail winds through the northern Illinois suburb, stands of trees often line one side of the path or the other, making for a pleasant journey. The trail can be used year-round as it's plowed in winter.

For a longer journey, connections to the [Leland Path](#) and [Riverside Recreational Path](#) are possible a few blocks north of the trail's northern end.



# Main Street Bike Path

*Illinois*

**States:** Illinois

**Counties:** Winnebago

Length: 1.2miles

**Trail end points:** McDonald Road and  
Rambouillet Ridge to Main Street and Bridge  
Street

**Trail surfaces:** Asphalt

**Trail category:** Greenway/Non-RT

**Trail activities:** Bike, Inline  
Skating, Wheelchair Accessible, Walking

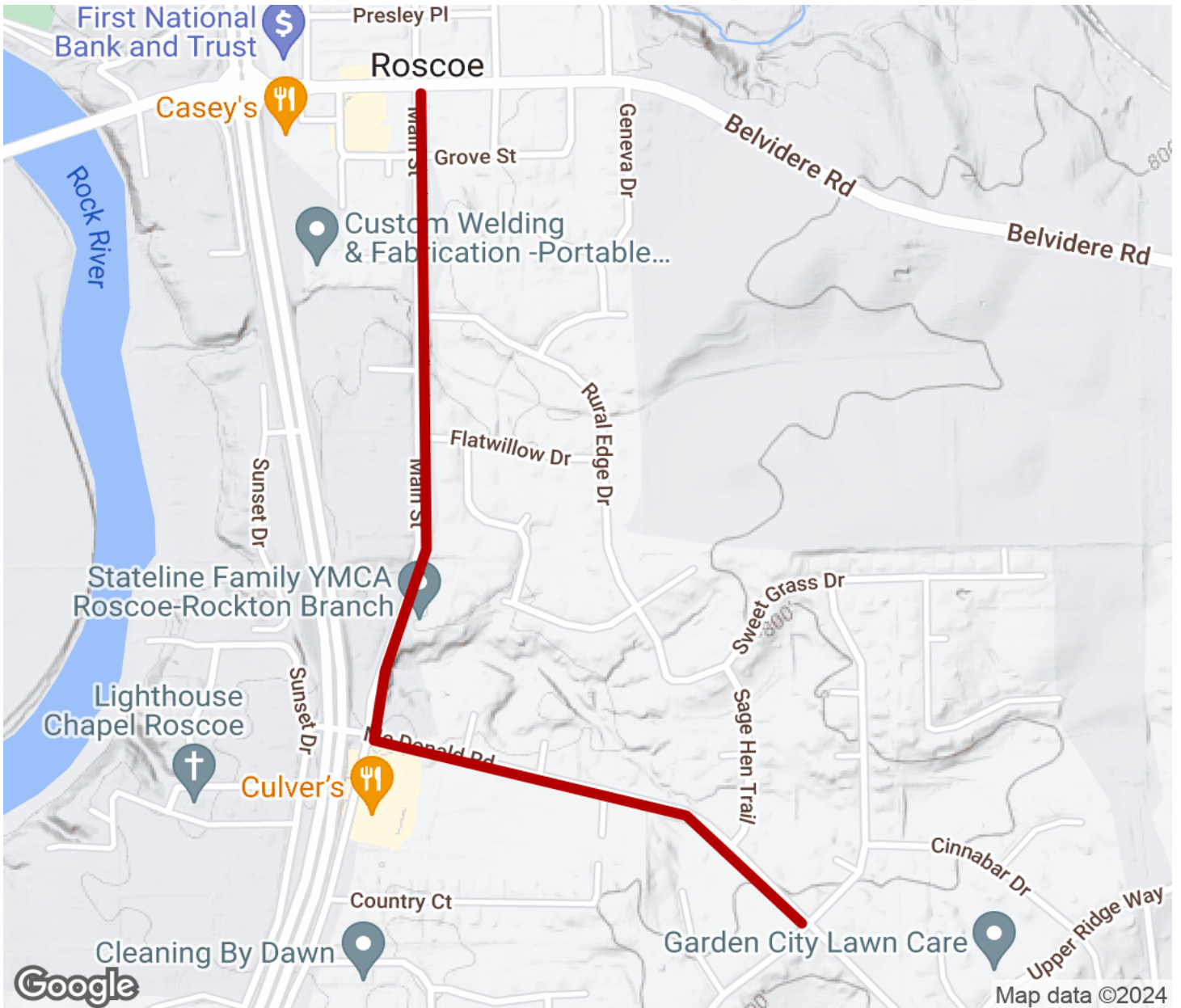
## Parking & Trail Access

Street parking is available in downtown Roscoe.



# Main Street Bike Path

Illinois



Trailhead



Restroom



Parking



Water Fountain



Tunnel



**TrailLink**  
by Rails-to-Trails Conservancy

**TrailLink.com**