



2024

TrailLink Unlimited 

Guides



**Mascoma
River
Greenway**
New Hampshire



Mascoma River Greenway

New Hampshire

The Mascoma River Greenway is a planned 4-mile rail-trail through the heart of Lebanon. The paved, multiuse trail is currently



Friends of the Northern Rail Trail resulted in the establishment of a Cycling Without Age chapter, which offers those with mobility challenges an opportunity to experience both the Mascoma River Greenway and Northern Rail Trail while being piloted by volunteer drivers in the carriage of an electric trishaw.

The multiuse trail traces the route of the former Boston & Maine Railroad through the town, bringing residents closer to the river and to the flora and fauna that surrounds it. The trail also serves to connect locals and visitors with various destinations ranging from schools and shopping to parks.

The Mascoma River Greenway is a planned 4-mile rail-trail through the heart of Lebanon. The paved, multiuse trail is currently 2.78 miles, offering a pleasant opportunity for both recreation and commuting. At its eastern end in West Lebanon, the paved trail links with the [Northern Rail Trail](#), which spans more than 50 miles.

From its eastern endpoint on Spencer Street in Lebanon, the trail runs under the Hanover Street via a tunnel decorated with artwork. Emerging at Pocket Park, the trail continues west through the city to end by Glen Road in West Lebanon. The majority of the route is shaded by trees and crosses the river several times via restored pedestrian bridges.

A collaborative project between the City of Lebanon and



Mascoma River Greenway

New Hampshire

States: New Hampshire

Counties: Grafton

Length: 2.78miles

Trail end points: Spencer St in downtown
Lebanon to Glen Rd in West Lebanon

Trail surfaces: Asphalt, Gravel

Trail category: Rail-Trail

Trail activities: Bike, Fishing, Walking, Cross
Country Skiing

Parking & Trail Access

Mascoma River Greenway can be accessed at various points along its length, including along Colburn Park (51 N Park St, Lebanon).

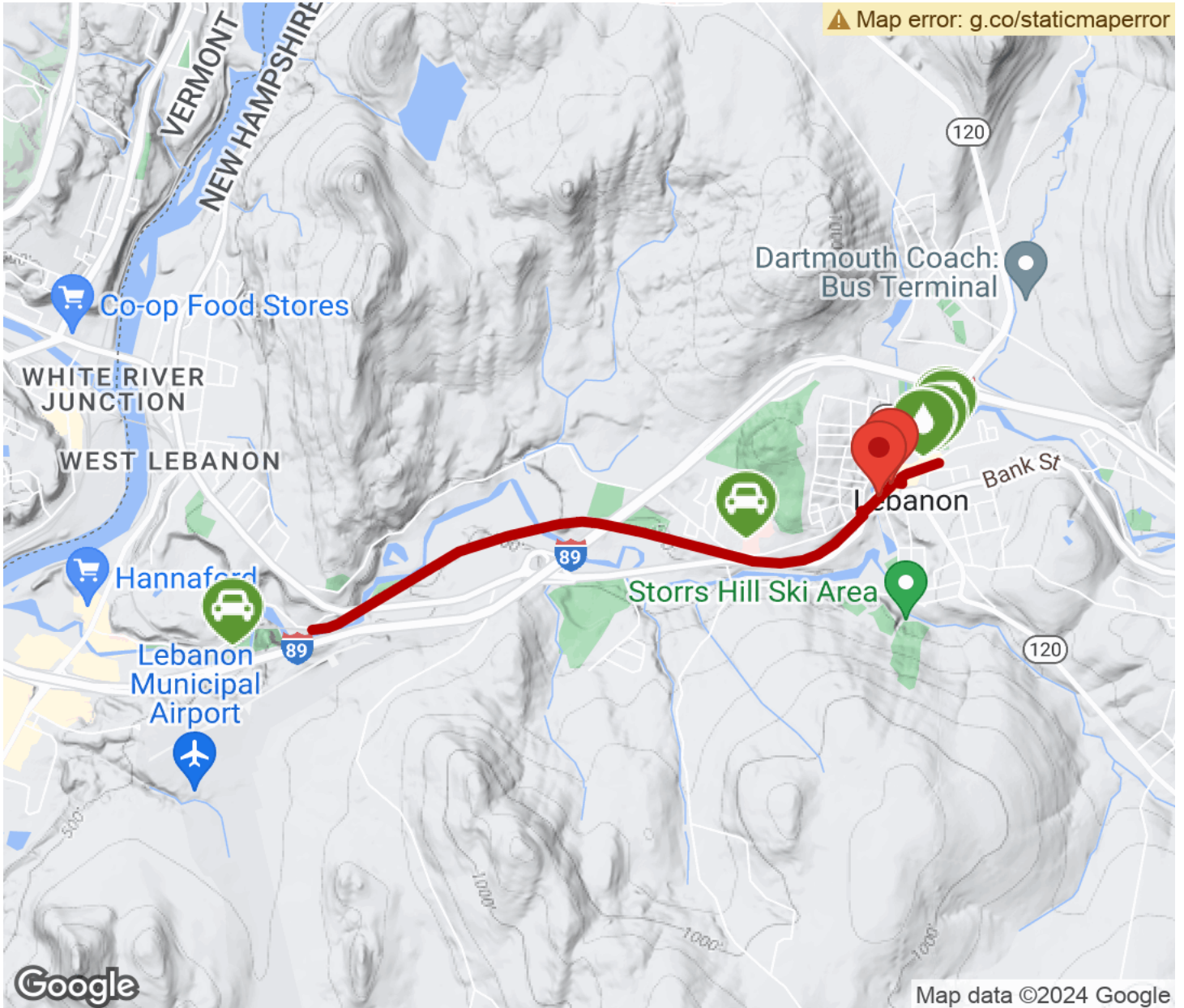
On the other end of the trail, parking is available in Riverside Park (103 Glen Rd, West Lebanon), located 0.4 miles west of the western endpoint of the trail; note that this requires on-road riding along Glen Road to go from the park to the trail.

Visit the [TrailLink map](#) for all options and detailed directions.



Mascoma River Greenway

New Hampshire



Trailhead



Restroom



Parking



Water Fountain



Tunnel



TrailLink
by Rails-to-Trails Conservancy

TrailLink.com